

# CERTIFICATE OF LOCATION OF GOVERNMENT CORNER

County of Anoka

State of Minnesota

## Meander Corner of Sec. 34 Township 30 Range 24

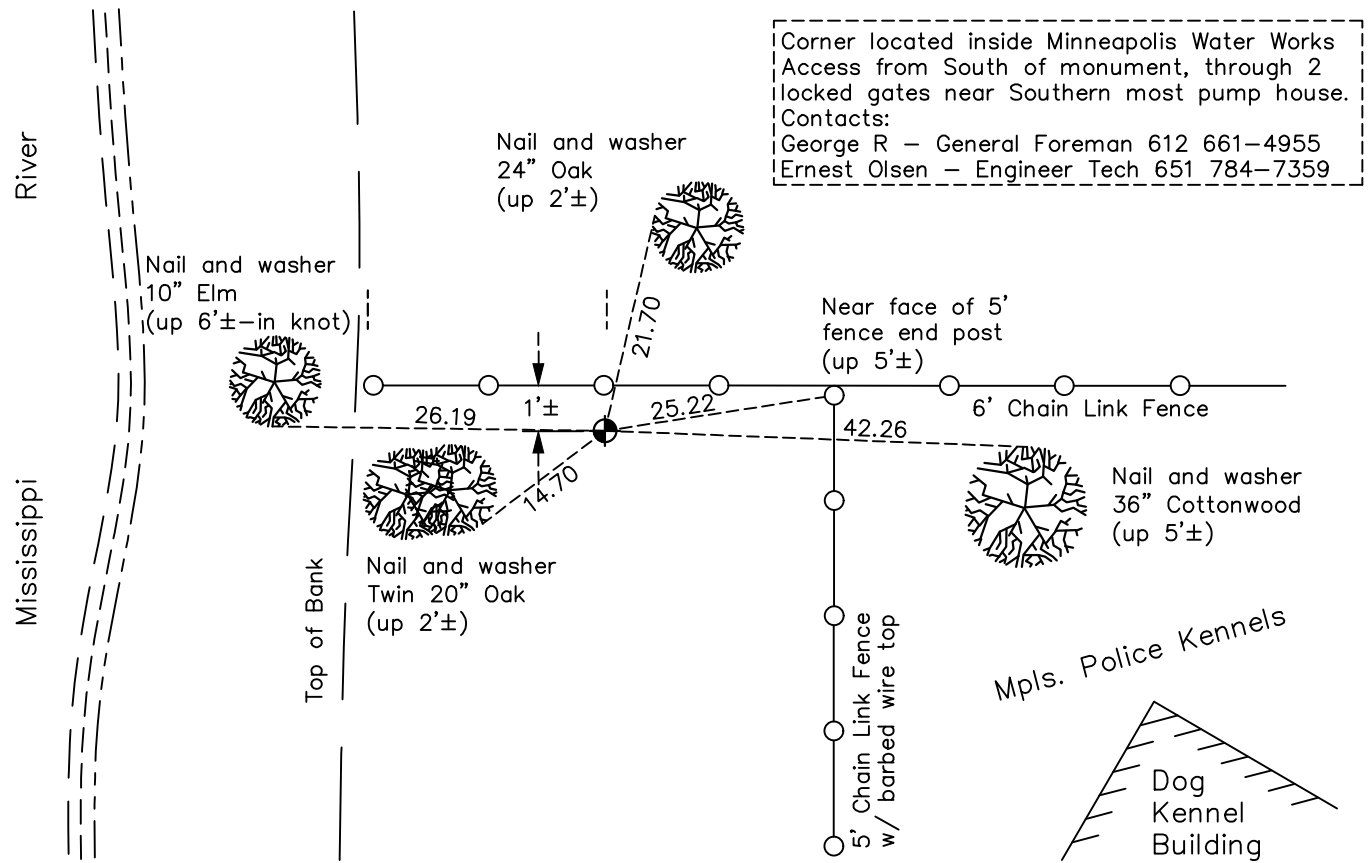
(Meander Corner No. 1 – on south line of section)

On the 15th day of January, 1969, the described corner was evidenced by a concrete  
monument

and to perpetuate the location of said corner, at the exact location thereof, a permanent marker was placed consisting of a cast iron monument

AND on the 13th day of January, 2023, said permanent marker was found flush and the ties  
were updated

Updated reference ties are as shown below.



N  
W ANOKA COUNTY SURVEYOR E  
S

Revision Date  
1/17/2023

N.A.D. 1983 Coordinates  
(1996 Adjustment)

County Project Coordinates	
Northing	<u>100069.0111</u>
Easting	<u>496087.7879</u>
Date	<u>1/12/05</u>

I hereby certify that this United States public land survey monument record is correct and complete to the best of my knowledge and belief.

*David Zieglmeier* Date 6/28/23

David Zieglmeier Anoka County Surveyor  
Minnesota License Number 46179

# HISTORY OF GOVERNMENT CORNER

Page No. 82

County of Anoka

State of Minnesota

## Meander Corner of Sec. 34 Township 30 Range 24 (Meander Corner No. 1 – on south line of section)

### **CORNER HISTORY:**

December 10, 1946 - Harvey Cartwright found a concrete monument up 4" using old ties. Updated the ties.

June 1, 1956 - Hoium found a concrete monument up 4" (Harbor line Mon. #89) and updated the ties.

September 15, 1960 - Found a circular concrete monument up 0.4' and updated ties.

May 15, 1964 - Found concrete monument and updated ties.

June 29, 1966 - Found concrete monument and updated ties.

January 15, 1969 - Found original monument removed. Set 1/2" x 18" iron pipe flush using remaining ties. Added and updated corner ties.

December 29, 1977 - Found 1/2" iron pipe and replaced with a cast iron monument flush. Updated ties.

July 23, 1980 - Found cast iron monument and updated ties.

August 8, 1989 - Found cast iron monument and updated ties.

January 12, 2005 - Established NAD 1983 (1996 adj.) Anoka County project coordinates by static GPS methods.

September 8, 2008 - Found cast iron monument and updated ties.

November 7, 2014 - Found cast iron monument and updated ties.

January 13, 2023 - Found cast iron monument flush, verified position by RTK GPS method and updated ties.