

CERTIFICATE OF LOCATION OF GOVERNMENT CORNER

County of Anoka

State of Minnesota

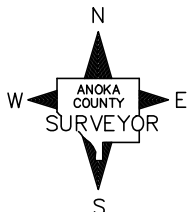
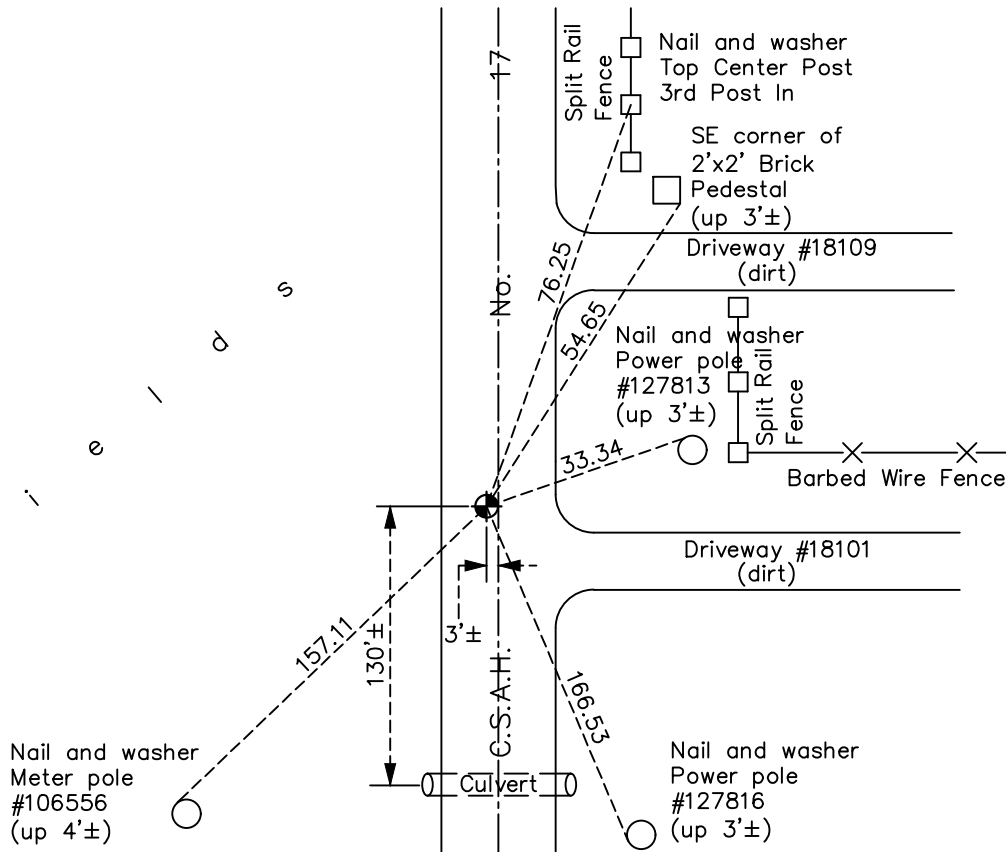
Northeast Corner of Sec. 1 Township 32 Range 23

On the 1st day of July, 1966, the described corner was evidenced by area resurvey

and to perpetuate the location of said corner, at the exact location thereof, a permanent marker was placed consisting of a cast iron monument

AND on the 6th day of January, 2021, said permanent marker was found flush and the ties were updated

Updated reference ties are as shown below.



Revision Date

6/29/2021

N.A.D. 1983 Coordinates
(1996 Adjustment)

County Project Coordinates	
Northing	<u>195594.8988</u>
Easting	<u>531962.6281</u>
Date	<u>8/23/96</u>

I hereby certify that this United States public land survey monument record is correct and complete to the best of my knowledge and belief.

David Zieglmeier Date 5/24/22

David Zieglmeier Anoka County Surveyor
Minnesota License Number 46179

HISTORY OF GOVERNMENT CORNER

Page No. 1

County of Anoka

State of Minnesota

Northeast Corner of Sec. 1 Township 32 Range 23

CORNER HISTORY:

September 1847 - This corner was established by James M. Marsh, Deputy Surveyor. Marsh marked the position by "Intersect West boundary 55 links South of temporary 6 mile corner and set post for corner to Township 32 & 33 North, Range 22 & 23 West." with four bearing trees marked as accessories.

July 1, 1966 - Set cast iron monument using area resurvey. Established ties to monument.

August 14, 1968 - Found cast iron monument and updated ties.

May 25, 1971 - Found cast iron monument and updated ties.

June 4, 1975 - Found cast iron monument and updated ties.

June 5, 1978 - Found cast iron monument and updated ties.

June 22, 1981 - Found cast iron monument and updated ties.

June 26, 1984 - Found cast iron monument and updated ties.

October 15, 1991 - Found cast iron monument and updated ties.

August 23, 1996 - Found cast iron monument and updated ties. Established NAD 1983 (1996 adj.) Anoka County project coordinates by static GPS methods.

April 12, 2011 - Found cast iron monument and updated ties.

June 11, 2014 - Found cast iron monument. Verified position by VRS GPS methods. Updated ties. Loosened top and painted up.

June 12, 2014 - Found monument broken from previous loosening of top. Set two P.K. nails 2' north and east. Set construction ties. Removed monument (unknown date of reset).

February 10, 2017 - Found cast iron monument flush. Verified position by VRS GPS methods. Updated ties.

January 6, 2021 - Found cast iron monument flush. Verified position by VRS GPS methods. Updated ties.