

CERTIFICATE OF LOCATION OF GOVERNMENT CORNER

County of Anoka

State of Minnesota

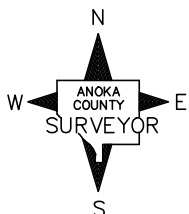
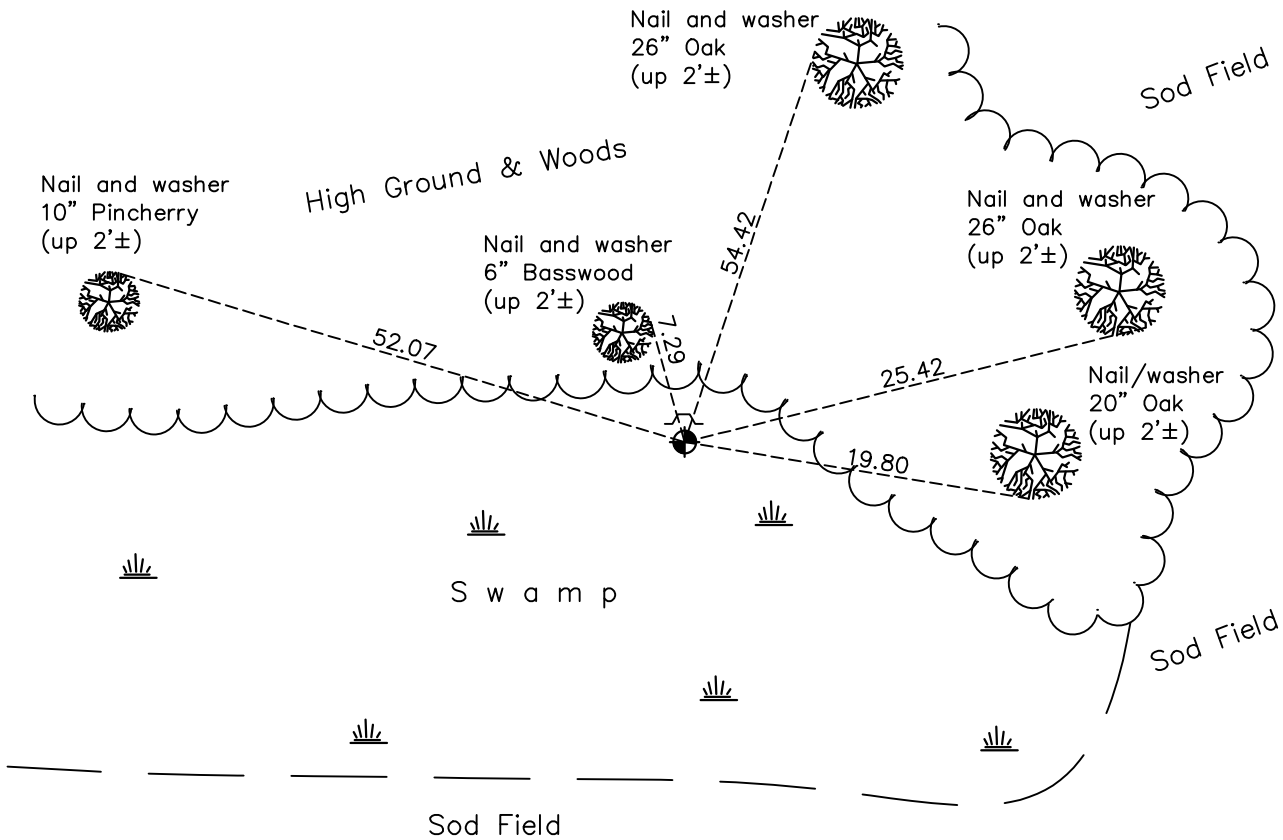
North 1/4 Corner of Sec. 1 Township 32 Range 23

On the 28th day of December, 1962, the described corner was evidenced by an iron pipe

and to perpetuate the location of said corner, at the exact location thereof, a permanent marker was placed consisting of a cast iron monument

AND on the 17th day of March, 2021, said permanent marker was found down 0.3'± and the ties were updated. A sign and post was found on the north side.

Updated reference ties are as shown below.



Revision Date

6/29/2021

N.A.D. 1983 Coordinates
(1996 Adjustment)

County Project Coordinates	
Northing	195598.9100
Easting	529324.0289
Date	9/05/96

I hereby certify that this United States public land survey monument record is correct and complete to the best of my knowledge and belief.

David Zieglmeier Date 5/24/22

David Zieglmeier Anoka County Surveyor
Minnesota License Number 46179

HISTORY OF GOVERNMENT CORNER

Page No. 1A

County of Anoka

State of Minnesota

North 1/4 Corner of Sec. 1 Township 32 Range 23

CORNER HISTORY:

September 1847 - This corner was established by James M. Marsh, Deputy Surveyor. Marsh marked the position by "Set post at quarter section corner" with one bearing tree marked as an accessory.

1956 - C.E. Coulter set a 1-1/2" gas pipe and established ties to pipe.

December 28, 1962 - Found iron pipe and updated ties.

1970 - Found iron pipe and replaced with a cast iron monument. Updated ties.

August 19, 1981 - Found cast iron monument broken due to construction and replaced with a new cast iron monument. Updated ties.

July 5, 1984 - Found cast iron monument and updated ties.

June 3, 1987 - Found cast iron monument and updated ties.

September 5, 1996 - Found cast iron monument and updated ties. Established NAD 1983 (1996 adj.) Anoka County project coordinates by static GPS methods.

April 1, 2011 - Found cast iron monument with a sign and post on the north side. Updated ties.

March 21, 2017 - Found cast iron monument down 0.3'± with a sign and post on the north side. Updated ties.

March 17, 2021 - Found cast iron monument down 0.3'± with a sign and post on the north side. Updated ties.