

CERTIFICATE OF LOCATION OF GOVERNMENT CORNER

County of Anoka

State of Minnesota

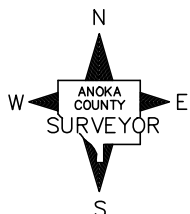
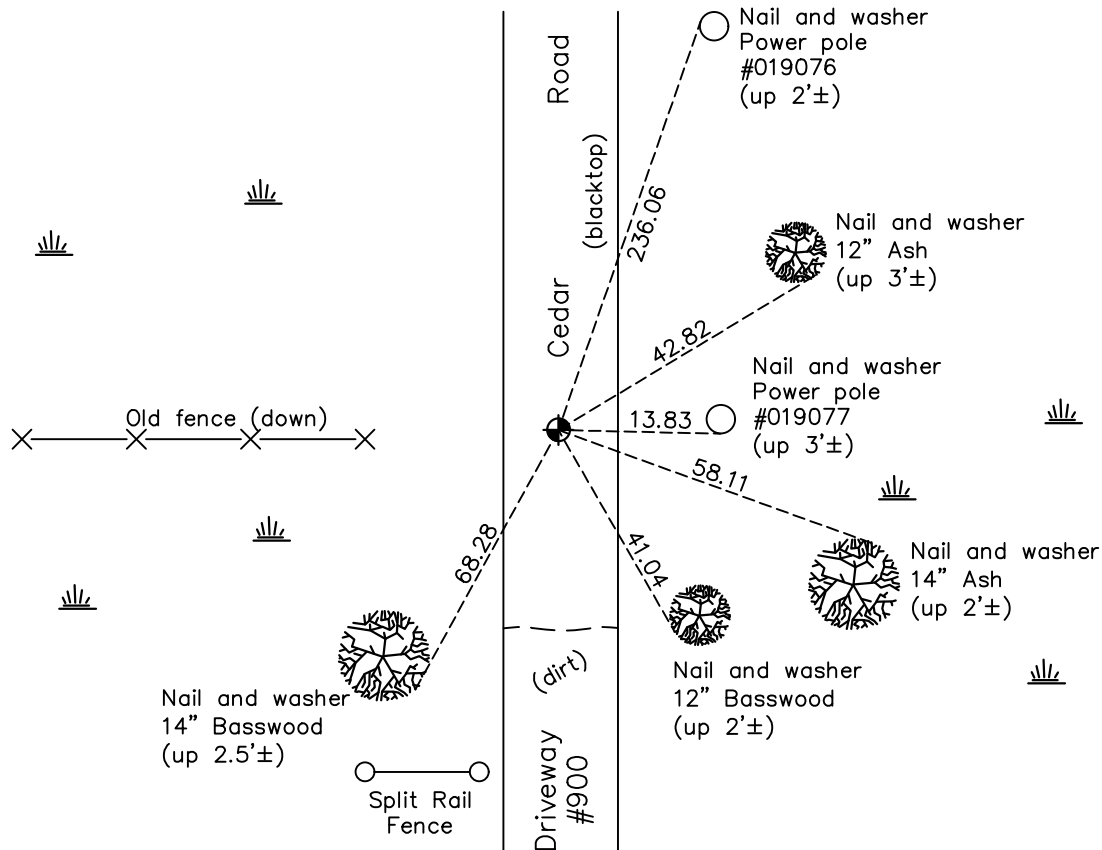
Witness Corner of Sec. 1 Township 32 Range 23
(on north line of section)

On the 3rd day of September, 1968, the described corner was evidenced by a 1" iron pipe

and to perpetuate the location of said corner, at the exact location thereof, a permanent marker was placed consisting of a cast iron monument

AND on the 10th day of March, 2021, said permanent marker was found down 0.4'± and the ties were updated

Updated reference ties are as shown below.



Revision Date

6/29/2021

N.A.D. 1983 Coordinates
(1996 Adjustment)

County Project Coordinates	
Northing	<u>195602.7833</u>
Easting	<u>527823.2117</u>
Date	<u>10/31/96</u>

I hereby certify that this United States public land survey monument record is correct and complete to the best of my knowledge and belief.

David Zieglmeier Date 5/24/22

David Zieglmeier Anoka County Surveyor
Minnesota License Number 46179

HISTORY OF GOVERNMENT CORNER

Page No. 2

County of Anoka

State of Minnesota

Witness Corner of Sec. 1 Township 32 Range 23

CORNER HISTORY:

September 3, 1968 - Found 1" iron pipe up 0.8'±. Replaced with a cast iron monument up 0.1'±. Updated ties.

August 19, 1975 - Found cast iron monument and updated ties.

June 6, 1978 - Found cast iron monument and updated ties.

July 10, 1981 - Found cast iron monument and updated ties.

October 18, 1991 - Found cast iron monument and updated ties.

October 31, 1996 - Found cast iron monument and updated ties. Established NAD 1983 (1996 adj.) Anoka County project coordinates by static GPS methods.

April 1, 2011 - Found cast iron monument broken off. Checked ties to center fin.

May 17, 2011 - Removed broken monument and set a 3' steel Telspar down 4' to stabilize soft ground. Set new cast iron monument on top of Telspar down 0.8'± from the surface using static GPS methods. Verified position by VRS GPS methods. Updated ties.

March 21, 2017 - Found cast iron monument down 0.8'± and updated ties.

March 10, 2021 - Found cast iron monument down 0.4'± and updated ties.