

CERTIFICATE OF LOCATION OF GOVERNMENT CORNER

County of Anoka

State of Minnesota

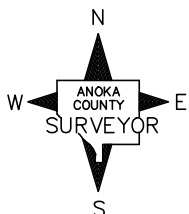
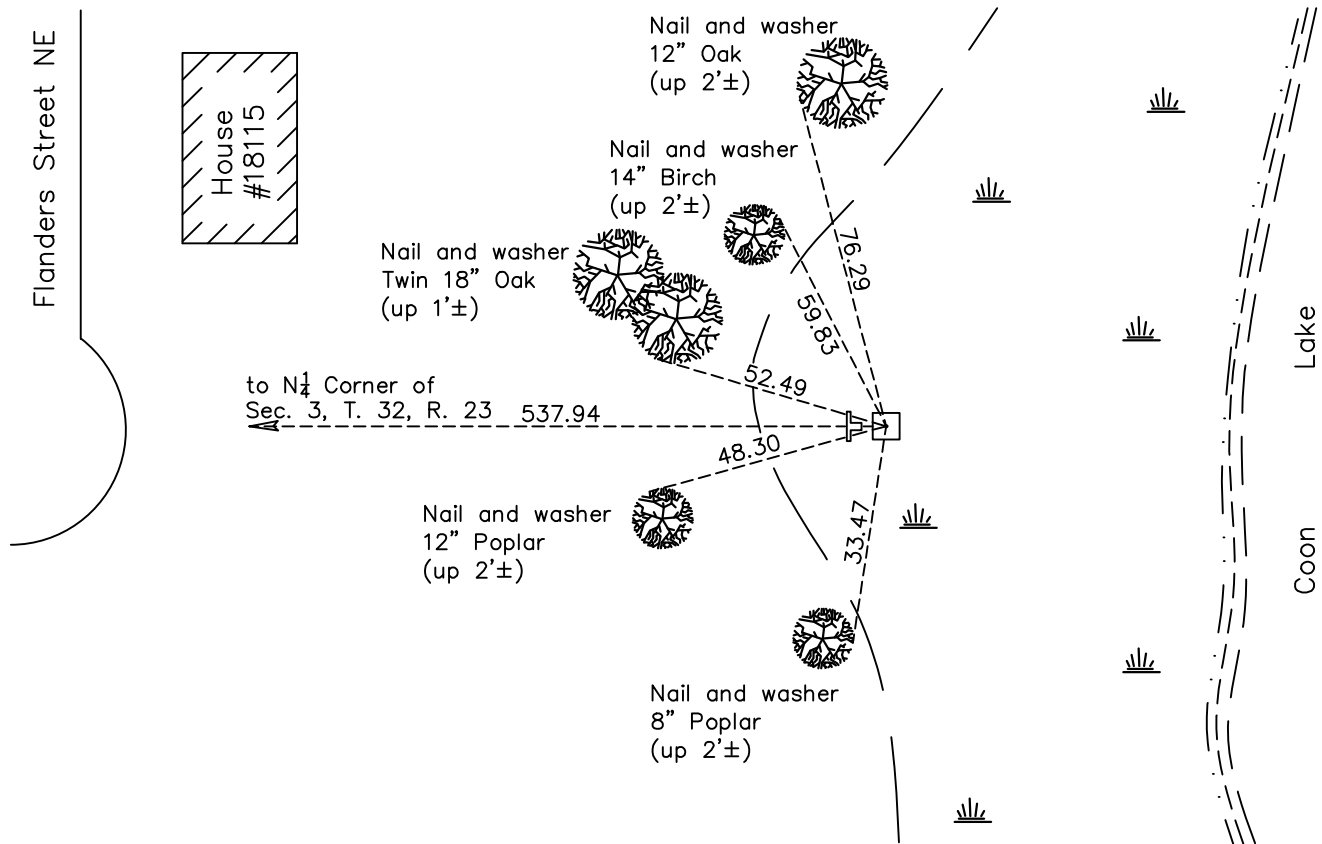
Meander Corner of Sec. 3 Township 32 Range 23 (on west side of Coon Lake)

On the 20th day of December, 1960, the described corner was evidenced by a concrete monument

and to perpetuate the location of said corner, at the exact location thereof, a permanent marker was placed consisting of the same concrete monument

AND on the 6th day of January, 2021, said permanent marker was found leaning slightly to the west and up 0.5'± with a 'T' post on the west side. The ties were updated

Updated reference ties are as shown below.



Revision Date

6/29/2021

N.A.D. 1983 Coordinates
(1996 Adjustment)

County Project Coordinates	
Northing	<u>195684.8774</u>
Easting	<u>519400.1926</u>
Date	<u>1/30/02</u>

I hereby certify that this United States public land survey monument record is correct and complete to the best of my knowledge and belief.

David Zieglmeier Date 5/24/22

David Zieglmeier Anoka County Surveyor
Minnesota License Number 46179

HISTORY OF GOVERNMENT CORNER

Page No. 3

County of Anoka

State of Minnesota

Meander Corner of Sec. 3 Township 32 Range 23 (on west side of Coon Lake)

CORNER HISTORY:

September 1847 - This corner was established by James M. Marsh, Deputy Surveyor. Marsh marked the position by "Leave lake and set meander post in marsh" with one bearing tree marked as an accessory.

October 10, 1944 - Harvey Cartwright found an iron and old B.T. corner to be moved west onto high ground. Set a concrete monument and established ties to concrete monument.

December 20, 1960 - Found concrete monument up 0.3' and 5'± from the waters edge. Updated ties. Set an iron on the north face of monument.

July 8, 1964 - Found concrete monument and updated ties.

July 18, 1966 - Found concrete monument and updated ties.

June 4, 1971 - Found concrete monument and updated ties.

June 5, 1975 - Found concrete monument and updated ties.

June 5, 1978 - Found concrete monument and updated ties.

November 15, 1991 - Found concrete monument and updated ties.

January 30, 2002 - Found concrete monument and updated ties. Established NAD 1983 (1996 adj.) Anoka County project coordinates by static GPS methods.

March 17, 2011 - Found concrete monument up 0.5'± and leaning slightly west with a "T" post on the west side. Updated ties.

February 9, 2017 - Found concrete monument up 0.5'± and leaning slightly west with a "T" post on the west side. Updated ties.

January 6, 2021 - Found concrete monument up 0.5'± and leaning slightly west with a "T" post on the west side. Updated ties.