

CERTIFICATE OF LOCATION OF GOVERNMENT CORNER

County of Anoka

State of Minnesota

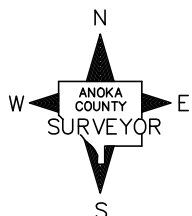
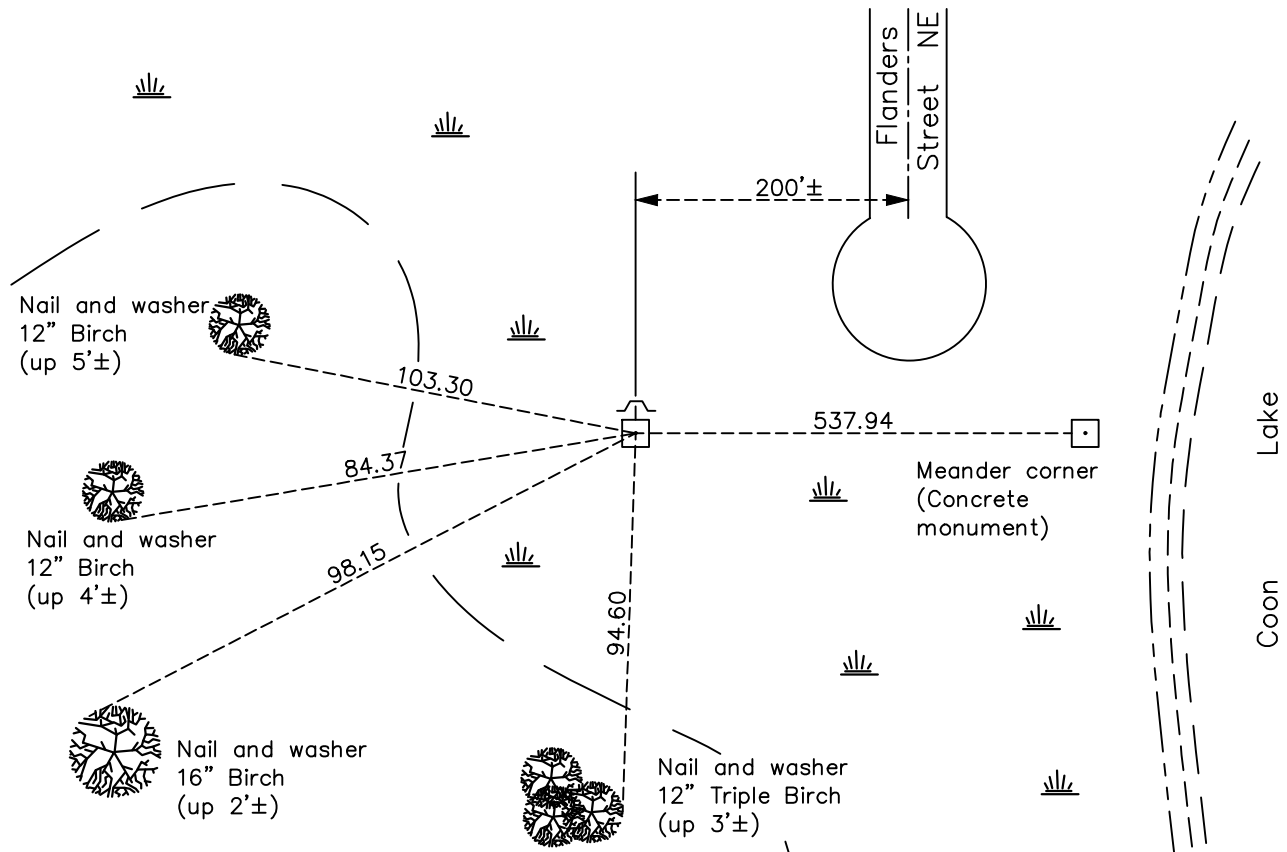
North $\frac{1}{4}$ Corner of Sec. 3 Township 32 Range 23

On the 22nd day of December, 1960, the described corner was evidenced by a concrete monument

and to perpetuate the location of said corner, at the exact location thereof, a permanent marker was placed consisting of a 2" square x 5' Telspar with a 'County Surveyor' cap and punch mark with a sign and post on the North side

AND on the 28th day of December, 2022, said permanent marker was Found and removed broken concrete monument. Reset w/ 2" Sq x 5' Telspar with punched cap by RTK VRS method, set up 1'±

Updated reference ties are as shown below.



Revision Date
1/03/2023

N.A.D. 1983 Coordinates
(1996 Adjustment)

County Project Coordinates	
Northing	<u>195689.9500</u>
Easting	<u>518862.6753</u>
Date	<u>2/21/02</u>

I hereby certify that this United States public land survey monument record is correct and complete to the best of my knowledge and belief.

David Zieglmeier Date 6/28/23

David Zieglmeier Anoka County Surveyor
Minnesota License Number 46179

HISTORY OF GOVERNMENT CORNER

Page No. 4

County of Anoka

State of Minnesota

North 1/4 Corner of Sec. 3 Township 32 Range 23

CORNER HISTORY:

September 1847 - This corner was established by James M. Marsh, Deputy Surveyor. Marsh marked the position by "Set post at quarter section corner" with one bearing tree marked as an accessory.

October 10, 1944 - Harvey Cartwright set a concrete monument flush and established ties to the monument.

Unknown Date - Dennis Carlson found a concrete monument flush and updated the ties.

December 22, 1960 - Found concrete monument flush and updated ties. Set an iron pipe on the south side of monument.

January 21, 1974 - Found concrete monument and updated ties.

February 21, 1978 - Found concrete monument broken off and updated ties.

February 21, 2002 - Found concrete monument. Established NAD 1983 (1996 adj.) Anoka County project coordinates by static GPS methods. Updated ties.

March 6, 2012 - Found concrete monument leaning southwesterly 0.5'±. Updated ties.

February 7, 2017 - Monument not located.

December 29, 2022 - Found and removed concrete monument down 0.5'±. Reset with 2" sq x 5' Telspar with 'County Surveyor' punched cap, set using RTK GPS method up 1' ±. Updated the ties.