

# CERTIFICATE OF LOCATION OF GOVERNMENT CORNER

County of Anoka

State of Minnesota

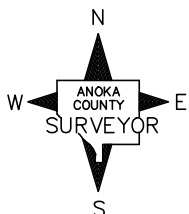
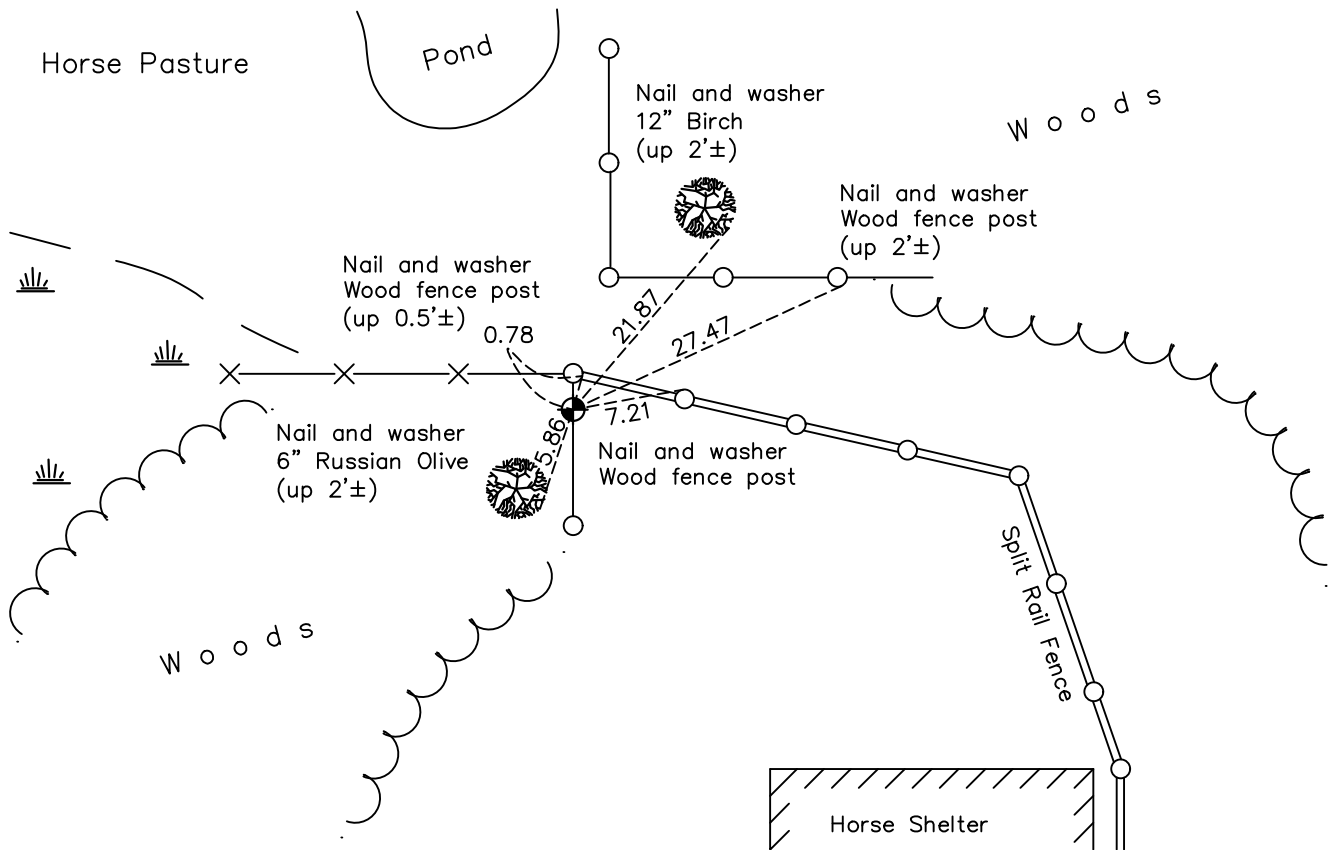
## Northwest Corner of Sec. 3 Township 32 Range 23

On the 20th day of December, 1960, the described corner was evidenced by a wellpoint

and to perpetuate the location of said corner, at the exact location thereof, a permanent marker was placed consisting of a cast iron monument

AND on the 6th day of January, 2021, said permanent marker was found flush and the ties were updated

Updated reference ties are as shown below.



Revision Date

7/02/2021

N.A.D. 1983 Coordinates  
(1996 Adjustment)

County Project Coordinates	
Northing	<u>195715.0443</u>
Easting	<u>516226.9935</u>
Date	<u>8/22/96</u>

I hereby certify that this United States public land survey monument record is correct and complete to the best of my knowledge and belief.

David Zieglmeier Date 5/24/22

David Zieglmeier Anoka County Surveyor  
Minnesota License Number 46179

# HISTORY OF GOVERNMENT CORNER

Page No. 5

County of Anoka

State of Minnesota

## Northwest Corner of Sec. 3 Township 32 Range 23

### **CORNER HISTORY:**

September 1847 - This corner was established by James M. Marsh, Deputy Surveyor. Marsh marked the position by "Set post at corner to sections 3, 4, 33 & 34" with one bearing tree marked as an accessory.

December 20, 1960 - Found old well point up 0.8'± and updated ties.

July 8, 1964 - Found old well point and updated ties.

July 18, 1966 - Found old well point and updated ties.

June 15, 1971 - Found well point up 3'± and replaced with a cast iron monument up 0.2'± using corner ties. Updated ties.

June 5, 1975 - Found cast iron monument and updated ties.

June 6, 1978 - Found cast iron monument and updated ties.

June 22, 1981 - Found cast iron monument and updated ties.

July 15, 1984 - Found cast iron monument and updated ties.

November 15, 1991 - Found cast iron monument and updated ties.

August 22, 1996 - Found cast iron monument and updated ties. Established NAD 1983 (1996 adj.) Anoka County project coordinates by static GPS methods.

March 25, 2011 - Found cast iron monument and updated ties.

March 17, 2017 - Found cast iron monument and updated ties.

January 6, 2021 - Found cast iron monument and updated ties. Verified position by VRS GPS method.