

# CERTIFICATE OF LOCATION OF GOVERNMENT CORNER

County of Anoka

State of Minnesota

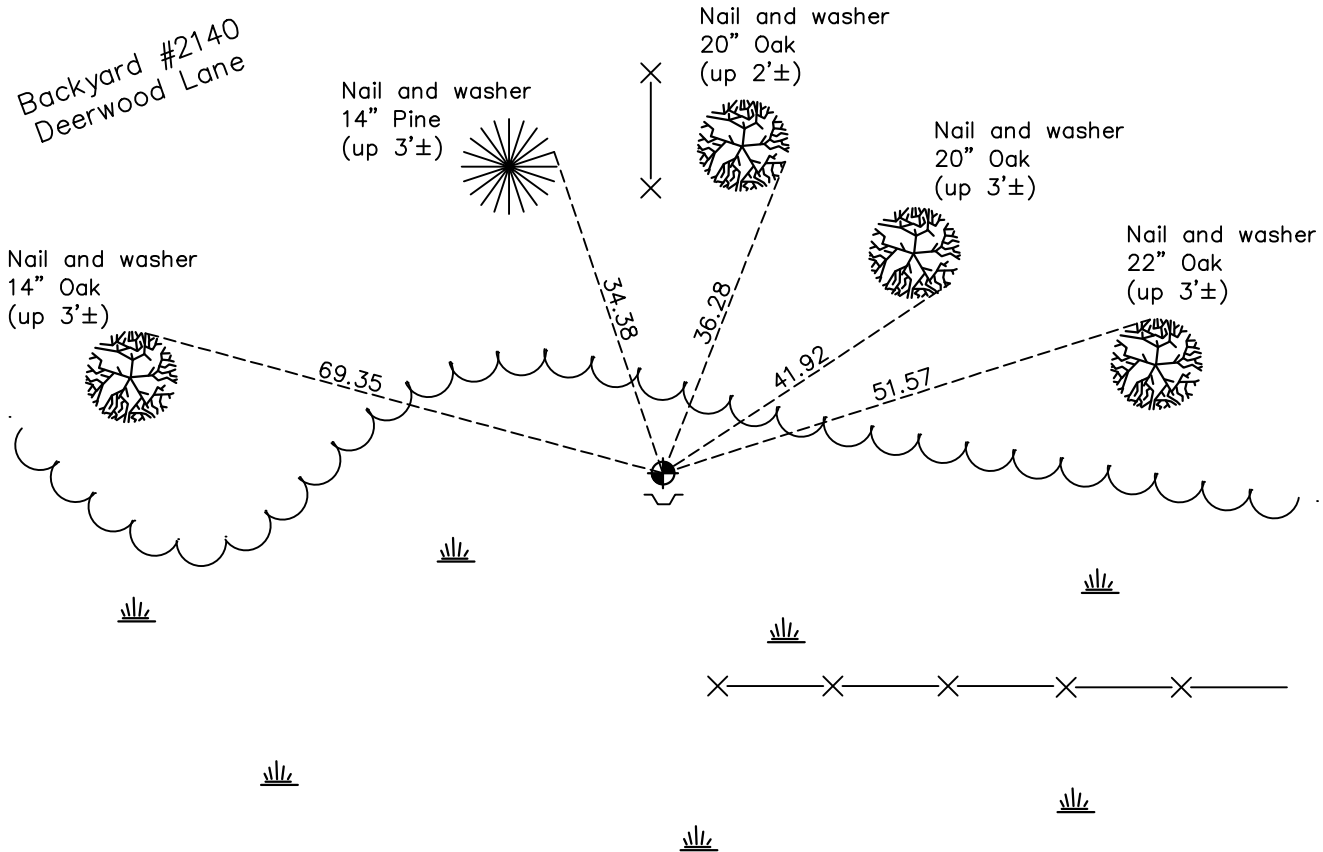
## North 1/4 Corner of Sec. 4 Township 32 Range 23

On the 10th day of August, 1962, the described corner was evidenced by a cast iron monument set by N.C. Hoium

and to perpetuate the location of said corner, at the exact location thereof, a permanent marker was placed consisting of a cast iron monument

AND on the 17th day of March, 2021, said permanent marker was found 2" x 2" sq. steel Telespar monument up 1'± w/punchmarked cap. Updated ties and verified position by VRS GPS method.

Updated reference ties are as shown below.



N  
  
 S

ANOKA COUNTY SURVEYOR

Revision Date  
7/02/2021

N.A.D. 1983 Coordinates  
(1996 Adjustment)

County Project Coordinates	
Northing	<u>195748.3056</u>
Easting	<u>513590.8237</u>
Date	<u>1/29/02</u>

I hereby certify that this United States public land survey monument record is correct and complete to the best of my knowledge and belief.

*David Zieglmeier* Date 5/31/22

David M. Zieglmeier Anoka County Deputy Surveyor  
 Minnesota License Number 46179

# HISTORY OF GOVERNMENT CORNER

Page No. 6

County of Anoka

State of Minnesota

## North 1/4 Corner of Sec. 4 Township 32 Range 23

### **CORNER HISTORY:**

September 1847 - This corner was established by James M. Marsh, Deputy Surveyor. Marsh marked the position by "Set post at quarter section corner" with one bearing tree marked as an accessory.

August 10, 1962 - Found cast iron monument (not Anoka Co.) set by N.C. Hoium. Updated ties.

July 16, 1964 - Found cast iron monument and updated ties.

June 15, 1971 - Found cast iron monument and updated ties.

July 17, 1975 - Found cast iron monument and updated ties.

June 6, 1978 - Found cast iron monument and updated ties.

June 22, 1981 - Found cast iron monument and updated ties.

July 16, 1984 - Found cast iron monument and updated ties.

November 7, 1990 - Found cast iron monument and updated ties.

January 29, 2002 - Established NAD 1983 (1996 adj.) Anoka County project coordinates by static GPS methods.

August 17, 2017 - Cast iron monument not found and position now falls in swamp. Set capped iron pipe using VRS GPS methods. Checked ties to iron pipe.

August 21, 2017 - Found capped iron pipe and checked position by static GPS methods.

August 28, 2017 - Replaced capped iron pipe with a 2" x 2" x 7' steel Telspar monument with punchmarked cap (up 1'±) using static GPS methods. Updated ties. Set sign and post 1' south of monument.

March 17, 2021 - Found 2" x 2" sq. steel Telespar monument up 1' ± w/ "Co. Surveyor" cap & punchmark. Updated ties and verified position of corner by VRS GPS Method.