

CERTIFICATE OF LOCATION OF GOVERNMENT CORNER

County of Anoka

State of Minnesota

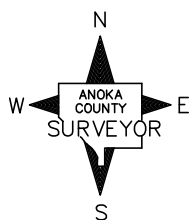
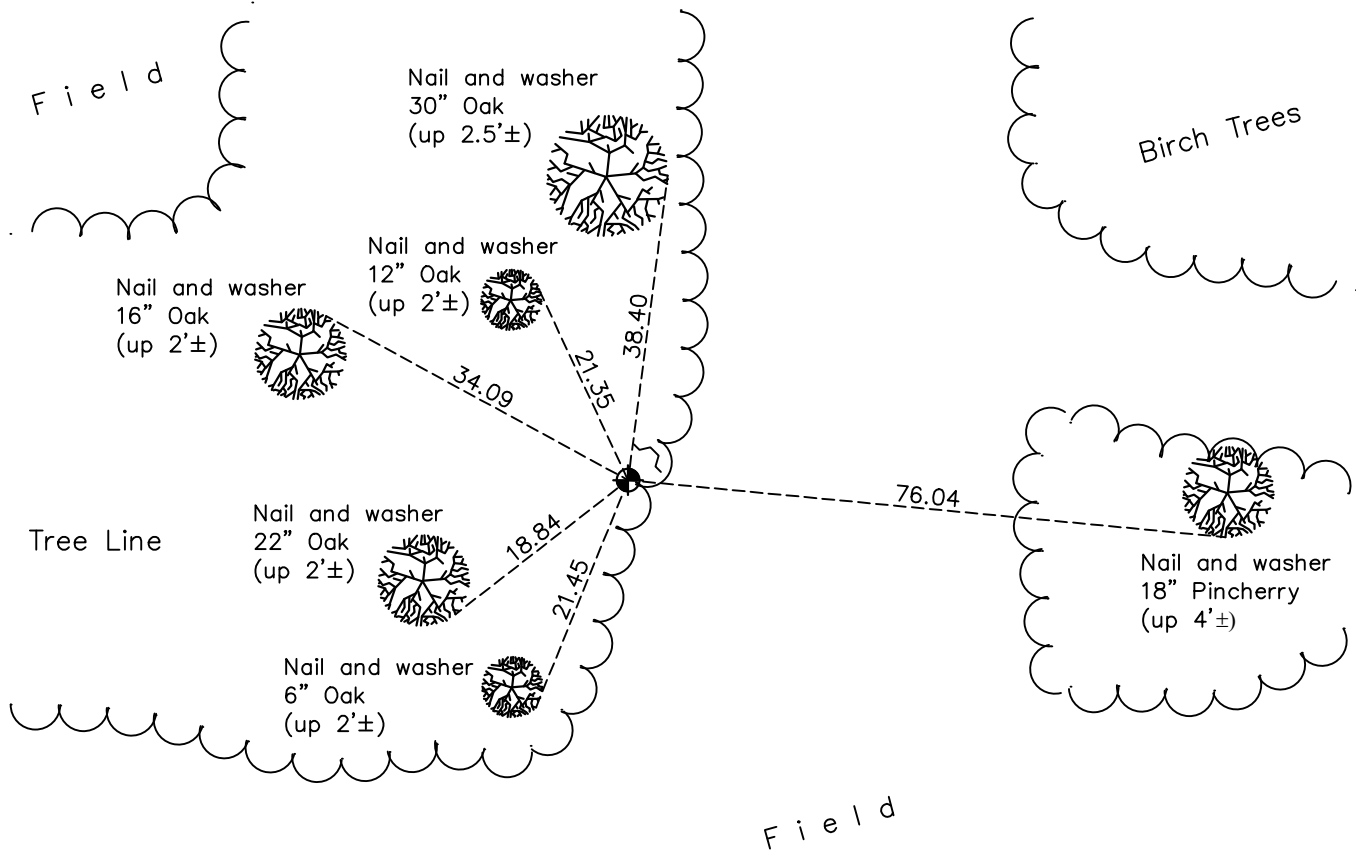
Northwest Corner of Sec. 4 Township 32 Range 23

On the 10th day of August, 1962, the described corner was evidenced by a 1 1/2" iron pipe over a granite monument

and to perpetuate the location of said corner, at the exact location thereof, a permanent marker was placed consisting of a cast iron monument with a sign and post on the northeast side

AND on the 29th day of April, 2022, said permanent marker was found CIM moved and reset to correct position. Verified position by RTK GPS methods. Sign and post to NE 1.5'±.

Updated reference ties are as shown below.



Revision Date
3/9/2023

N.A.D. 1983 Coordinates
(1996 Adjustment)

| County Project Coordinates | |
|----------------------------|--------------------|
| Northing | <u>195796.8459</u> |
| Easting | <u>510962.9598</u> |
| Date | <u>1/31/02</u> |

I hereby certify that this United States public land survey monument record is correct and complete to the best of my knowledge and belief.

David Zieglmeier Date 4/11/23

David M. Zieglmeier, Anoka County Surveyor
Minnesota License Number 46179

HISTORY OF GOVERNMENT CORNER

Page No. 7

County of Anoka

State of Minnesota

Northwest Corner of Sec. 4 Township 32 Range 23

CORNER HISTORY:

September 1847 - This corner was established by James M. Marsh, Deputy Surveyor. Marsh marked the position by "Set post at corner to sections 4, 5, 32 & 33" with two bearing trees marked as accessories.

August 10, 1962 - Found cast iron monument (not Anoka Co.) set by N.C. Hoium. Updated ties.

July 16, 1964 - Found cast iron monument and updated ties.

June 15, 1971 - Found cast iron monument down 0.1'± and updated ties.

June 5, 1975 - Found cast iron monument and updated ties.

June 6, 1978 - Found cast iron monument and updated ties.

July 8, 1981 - Found cast iron monument and updated ties.

July 16, 1984 - Found cast iron monument and updated ties.

November 7, 1990 - Found cast iron monument and updated ties.

January 31, 2002 - Found cast iron monument and updated ties. Established NAD 1983 (1996 adj.) Anoka County project coordinates by static GPS methods.

March 16, 2011 - Found cast iron monument down 0.5'± and updated ties.

March 21, 2017 - Found cast iron monument down 0.5'± and updated ties.

January 6, 2021 - Found cast iron monument down 0.5'± and updated ties. Verified position by VRS GPS.

April 29, 2022 - Found cast iron monument to have been moved 21.08 feet south and 25.34 feet west. Reset cast iron monument back to its original position using RTK GPS methods. Sign and post to the NE 1.5'±.