

# CERTIFICATE OF LOCATION OF GOVERNMENT CORNER

County of Anoka

State of Minnesota

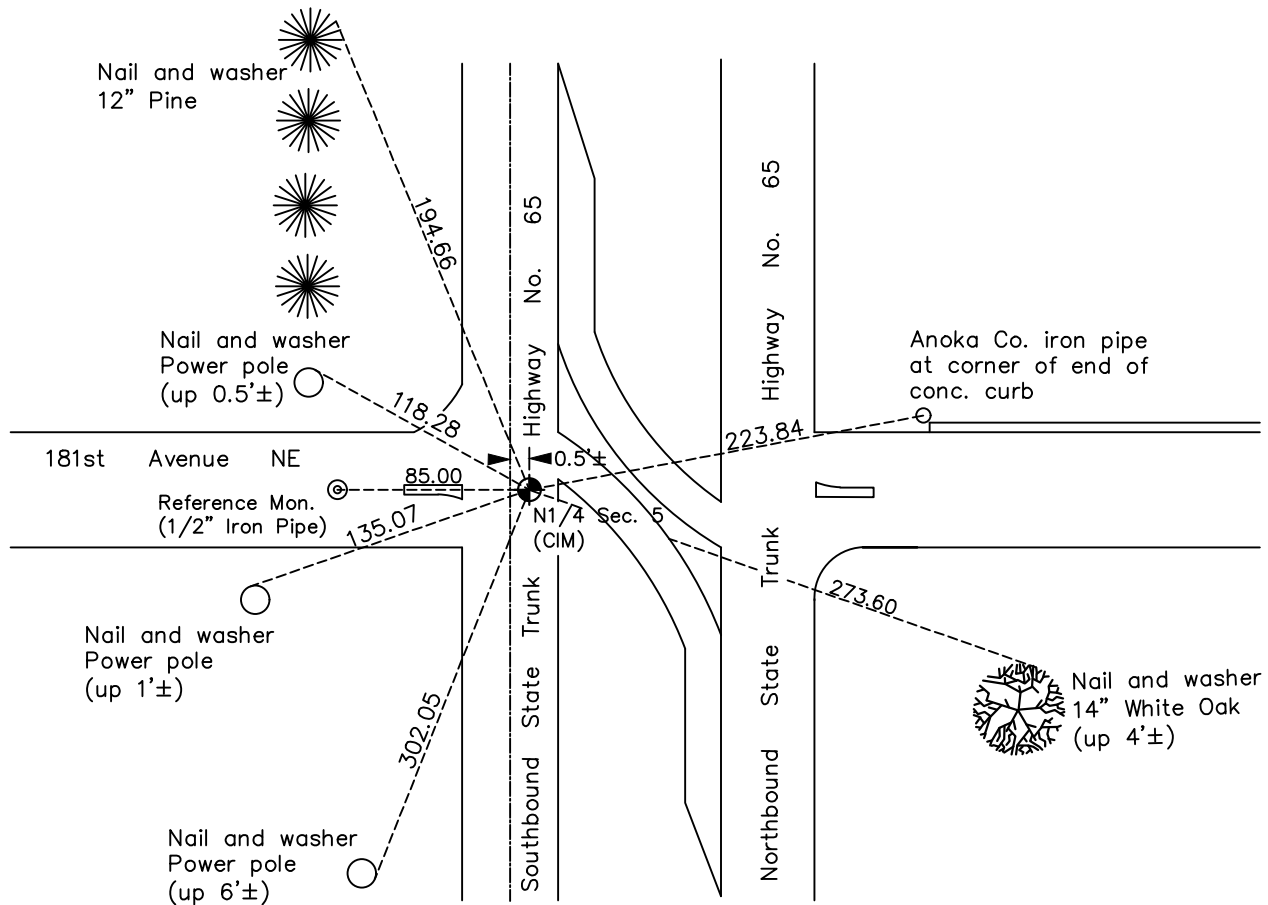
## North 1/4 Corner of Sec. 5 Township 32 Range 23

On the 9th day of September, 1969, the described corner was evidenced by a P.K. nail

and to perpetuate the location of said corner, at the exact location thereof, a permanent marker was placed consisting of a cast iron monument

AND on the 9th day of June, 2023, said permanent marker was found cast iron monument down 0.1'± under blacktop surface. Reference monument (index #1624) set 85' westerly

Updated reference ties are as shown below.



N.A.D. 1983 Coordinates  
(1996 Adjustment)

County Project Coordinates	
Northing	<u>195810.0084</u>
Easting	<u>508332.8863</u>
Date	<u>9/15/06</u>

Revision Date  
7/31/2023

I hereby certify that this United States public land survey monument record is correct and complete to the best of my knowledge and belief.

*David Zieglmeier* Date 12/11/23

David Zieglmeier Anoka County Surveyor  
 Minnesota License Number 46179

# REFERENCE MONUMENT FOR GOVERNMENT CORNER

Reference to County of Anoka State of Minnesota

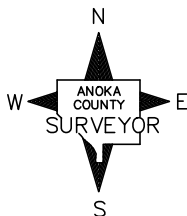
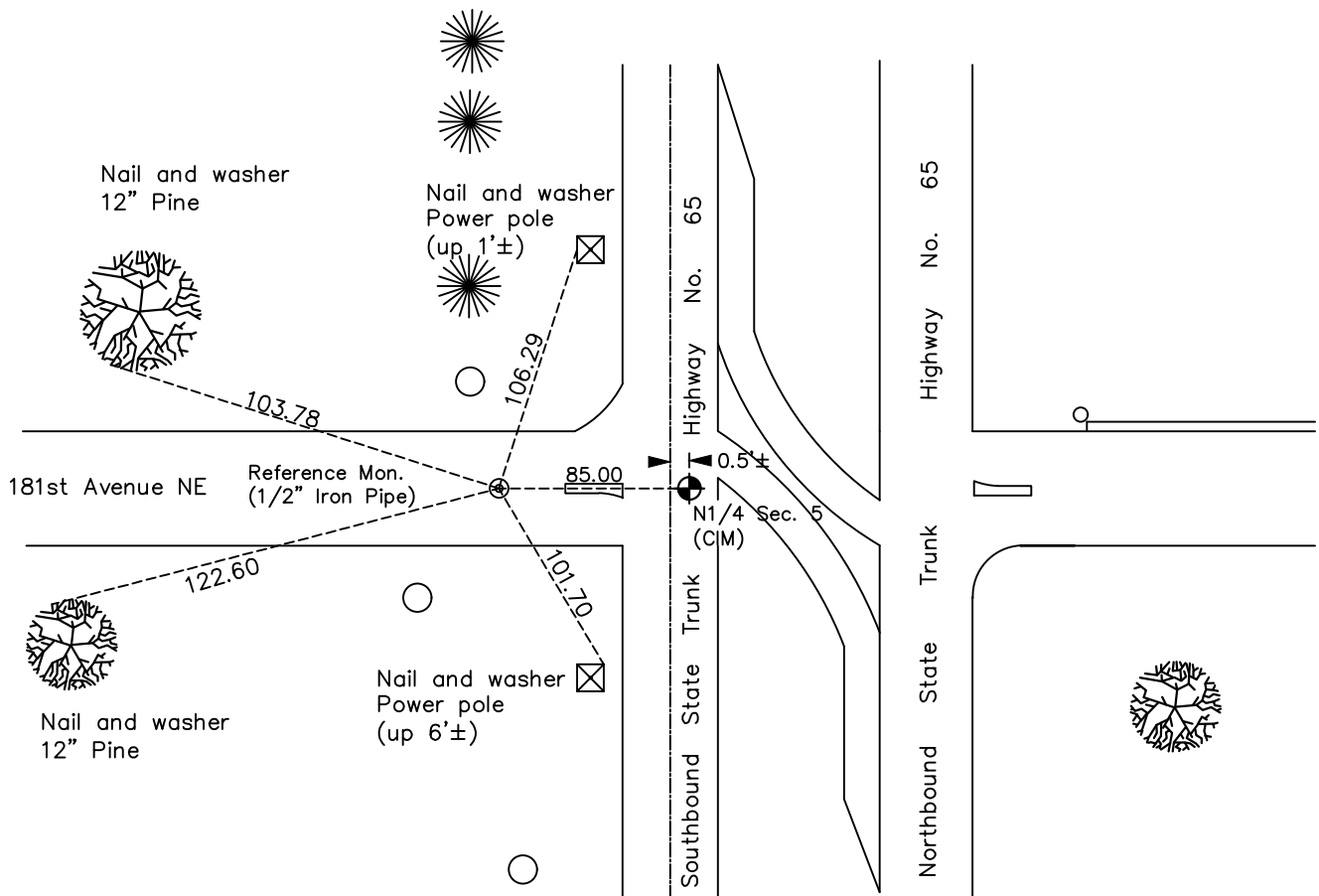
**North 1/4** Corner of Sec. **5** Township **32** Range **23**

On the 9th day of June, 2023, the described reference monument was evidenced by a computed position 85' westerly along the section line

and to reference the location of said corner, at the exact location thereof, a permanent marker was placed consisting of a 1/2" X 2' rebar with Anoka County aluminum cap and punch mark

AND on the 9th day of June, 2023, said permanent marker was set flush using RTK GPS method and ties were established to the reference monument

Updated reference ties are as shown below.



### **REFERENCE MONUMENT**

N.A.D. 1983 (2011 Adj.)

Revision Date  
7/31/2023

County Project Coordinates	
Northing	<u>195810.2527</u>
Easting	<u>508247.8867</u>
Date	<u>6/9/2023</u>

# HISTORY OF GOVERNMENT CORNER

Page No. 8

County of Anoka

State of Minnesota

North 1/4 Corner of Sec. 5 Township 32 Range 23

## **CORNER HISTORY:**

September 1847 - This corner was established by James M. Marsh, Deputy Surveyor. Marsh marked the position by "Set post at quarter section corner" with one bearing tree marked as an accessory.

October 29, 1944 - Harvey Cartwright found a granite monument down 1' and updated ties.

June 16, 1961 - R.M. Knudsen Found a granite monument down 1' (with an iron over granite). Updated the ties.

April 15, 1963 - Found 3/4" pinched iron pipe over granite monument. Updated ties.

July 18, 1966 - Found 1/2" iron pipe over granite monument and updated ties.

September 4, 1969 - Set cast iron monument flush in place of P.K. spike which checked with ties. Updated ties.

May 20, 1971 - Found cast iron monument and updated ties.

June 6, 1975 - Found cast iron monument and updated ties.

June 8, 1978 - Found cast iron monument and updated ties.

July 20, 1981 - Found cast iron monument and updated ties.

July 13, 1984 - Found cast iron monument and updated ties.

October 24, 1990 - Found cast iron monument under blacktop and updated ties.

September 15, 2006 - Found cast iron monument broken. Replaced with a new cast iron monument and updated ties. Established NAD 1983 (1996 adj.) Anoka County project coordinates by static GPS methods.

June 9, 2023 - Found cast iron monument down 0.1'±. Set **reference monument** to a computed position 85' westerly along the section line using RTK GPS method consisting of a 1/2" x 2' long rebar with Anoka County aluminum cap and punch mark, set flush with surface. Established ties to **reference monument**.