

CERTIFICATE OF LOCATION OF GOVERNMENT CORNER

County of Anoka

State of Minnesota

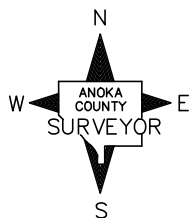
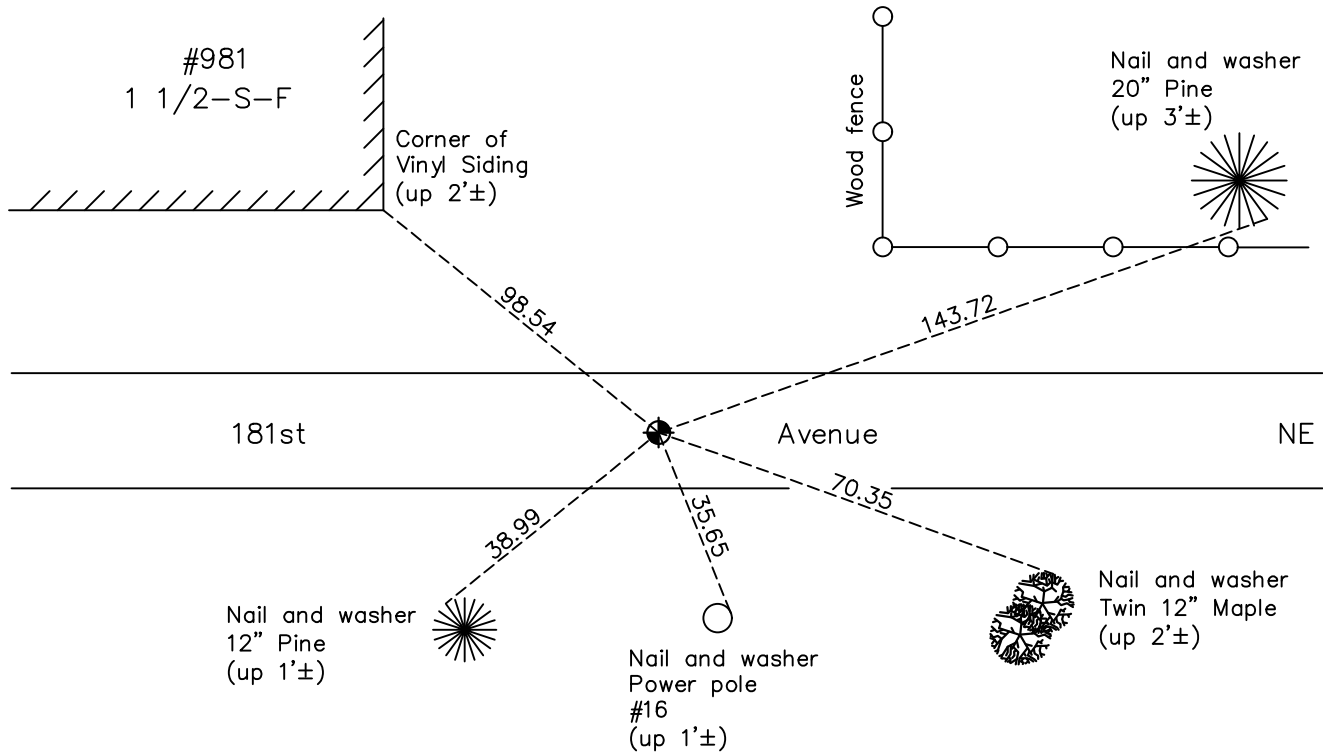
Northwest Corner of Sec. 5 Township 32 Range 23

On the 18th day of June, 1943, the described corner was evidenced by a granite monument

and to perpetuate the location of said corner, at the exact location thereof, a permanent marker was placed consisting of a cast iron monument (on centerline)

AND on the 7th day of June, 2023, said permanent marker was reset 8' CIM in Concrete after road construction, verified position by ACS RTK method and updated ties after setting

Updated reference ties are as shown below.



Revision Date
6/08/2023

N.A.D. 1983 Coordinates
 (1996 Adjustment)

County Project Coordinates	
Northing	<u>195817.5719</u>
Easting	<u>505701.5069</u>
Date	<u>9/26/01</u>

I hereby certify that this United States public land survey monument record is correct and complete to the best of my knowledge and belief.
David Zieglmeier Date 6/28/23
 David M. Zieglmeier Anoka County Deputy Surveyor
 Minnesota License Number 46179

HISTORY OF GOVERNMENT CORNER

Page No. 9

County of Anoka

State of Minnesota

Northwest Corner of Sec. 5 Township 32 Range 23

CORNER HISTORY:

September 1847 - This corner was established by James M. Marsh, Deputy Surveyor. Marsh marked the position by "Set post at corner to sections 5, 6, 31 & 32" with two bearing trees marked as accessories.

June 18, 1943 - Harvey Cartwright found a granite monument in the road and updated the ties.

November 3, 1961 - Found granite monument missing due to road grading. Set cast iron monument down 1'± using old Harvey Cartwright ties. Updated ties.

July 16, 1964 - Found cast iron monument and updated ties.

July 18, 1966 - Found cast iron monument and updated ties.

June 20, 1967 - Found cast iron monument and updated ties.

June 7, 1971 - Found cast iron monument and updated ties.

June 5, 1975 - Found cast iron monument and updated ties.

April 13, 1978 - Found cast iron monument in correct location by area resurvey and one remaining corner tie. Lowered monument to a depth of 0.5'±. Updated ties.

June 22, 1981 - Found cast iron monument and updated ties.

November 15, 1991 - Found cast iron monument and updated ties.

July 13, 1992 - Found cast iron monument and updated ties.

September 1, 1992 - Found cast iron monument and updated ties.

August 8, 1996 - Found cast iron monument and updated ties.

September 26, 2001 - Found cast iron monument and updated ties. Established NAD 1983 (1996 adj.) Anoka County project coordinates by static GPS methods.

March 14, 2011 - Found cast iron monument and updated ties.

March 9, 2017 - Found cast iron monument and updated ties.

February 8, 2021 - Found cast iron monument and updated ties. Position verified by VRS GPS method.

June 7, 2023 - Reset 8" CIM in Concrete after road construction. Verified position with ACS RTK GPS method and updated ties after setting. Job #23-100