

CERTIFICATE OF LOCATION OF GOVERNMENT CORNER

County of Anoka

State of Minnesota

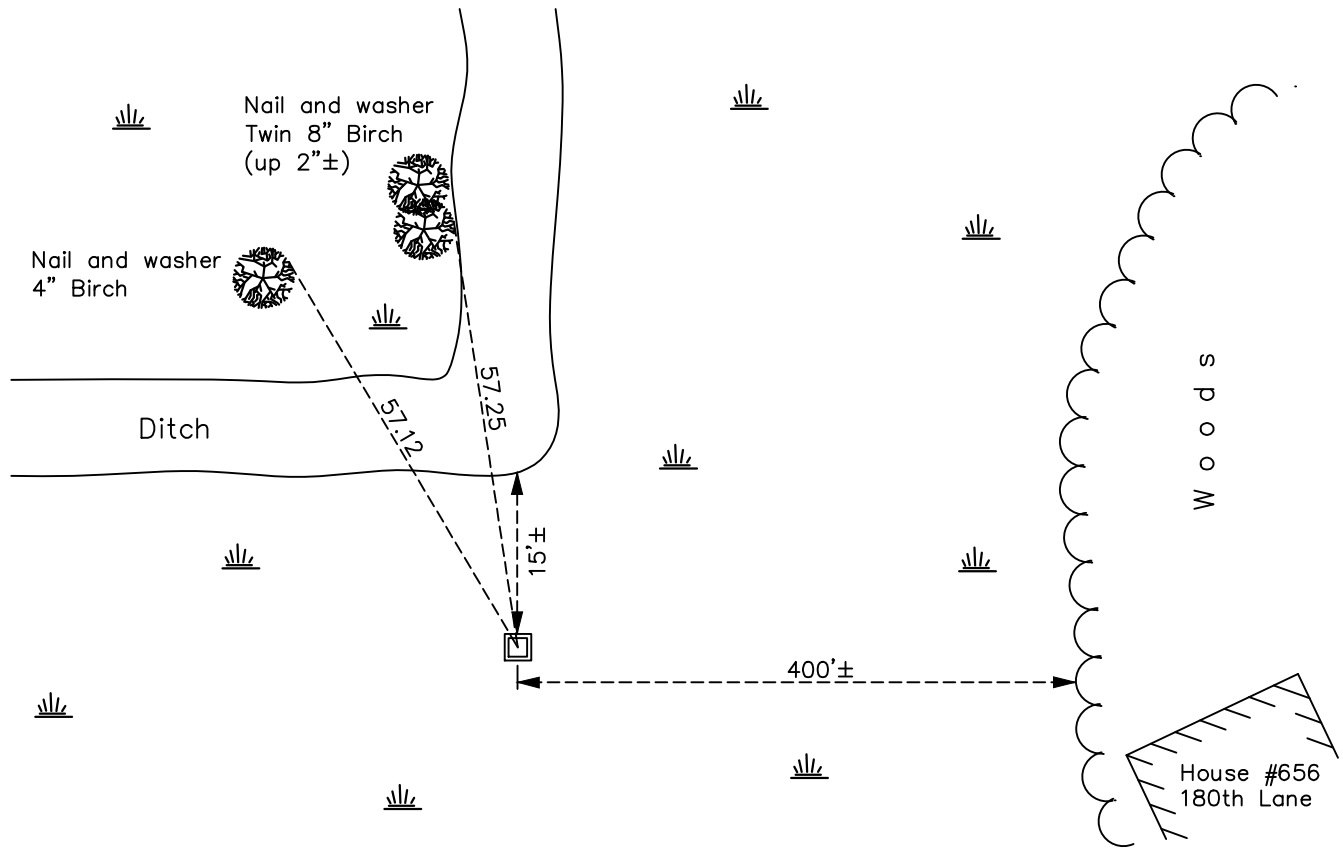
North $\frac{1}{4}$ Corner of Sec. 6 Township 32 Range 23

On the 21st day of November, 1978, the described corner was evidenced by area resurvey

and to perpetuate the location of said corner, at the exact location thereof, a permanent marker was placed consisting of a red and white 2" square steel Telspar monument with a sign attached

AND on the 17th day of February, 2017, said permanent marker was found up 5'± with a sign facing north and the ties were updated

Updated reference ties are as shown below.



Revision Date
7/02/2021

N.A.D. 1983 Coordinates
(1996 Adjustment)

County Project Coordinates	
Northing	<u>195826.0137</u>
Easting	<u>503070.3057</u>
Date	<u>1/02/02</u>

I hereby certify that this United States public land survey monument record is correct and complete to the best of my knowledge and belief.

David Zieglmeier Date 5/31/22

David M. Zieglmeier Anoka County Deputy Surveyor
Minnesota License Number 46179

HISTORY OF GOVERNMENT CORNER

Page No. 10

County of Anoka

State of Minnesota

North 1/4 Corner of Sec. 6 Township 32 Range 23

CORNER HISTORY:

September 1847 - This corner was established by James M. Marsh, Deputy Surveyor. Marsh marked the position by "Set post at quarter section corner" with one bearing tree marked as an accessory.

November 21, 1978 - Set red and white iron pipe using area resurvey. Established ties to pipe.

June 22, 1981 - Found red and white iron pipe and updated ties.

July 16, 1984 - Found red and white iron pipe and updated ties.

July 2, 1987 - Found red and white iron pipe and updated ties.

December 7, 1999 - Found red and white iron pipe and updated ties.

January 2, 2002 - Found 2" x 2" steel Telspar with sign attached. Updated ties. Established NAD 1983 (1996 adj.) Anoka County project coordinates by static GPS methods.

March 10, 2011 - Found 2" x 2" steel Telspar up 5'± with sign attached. Updated ties.

February 17, 2017 - Found 2" x 2" steel Telspar up 5'± with sign attached. Verified position by VRS GPS methods. Updated ties.

April 15, 2021 - Not able to access monument due to wet conditions.