

CERTIFICATE OF LOCATION OF GOVERNMENT CORNER

County of Anoka

State of Minnesota

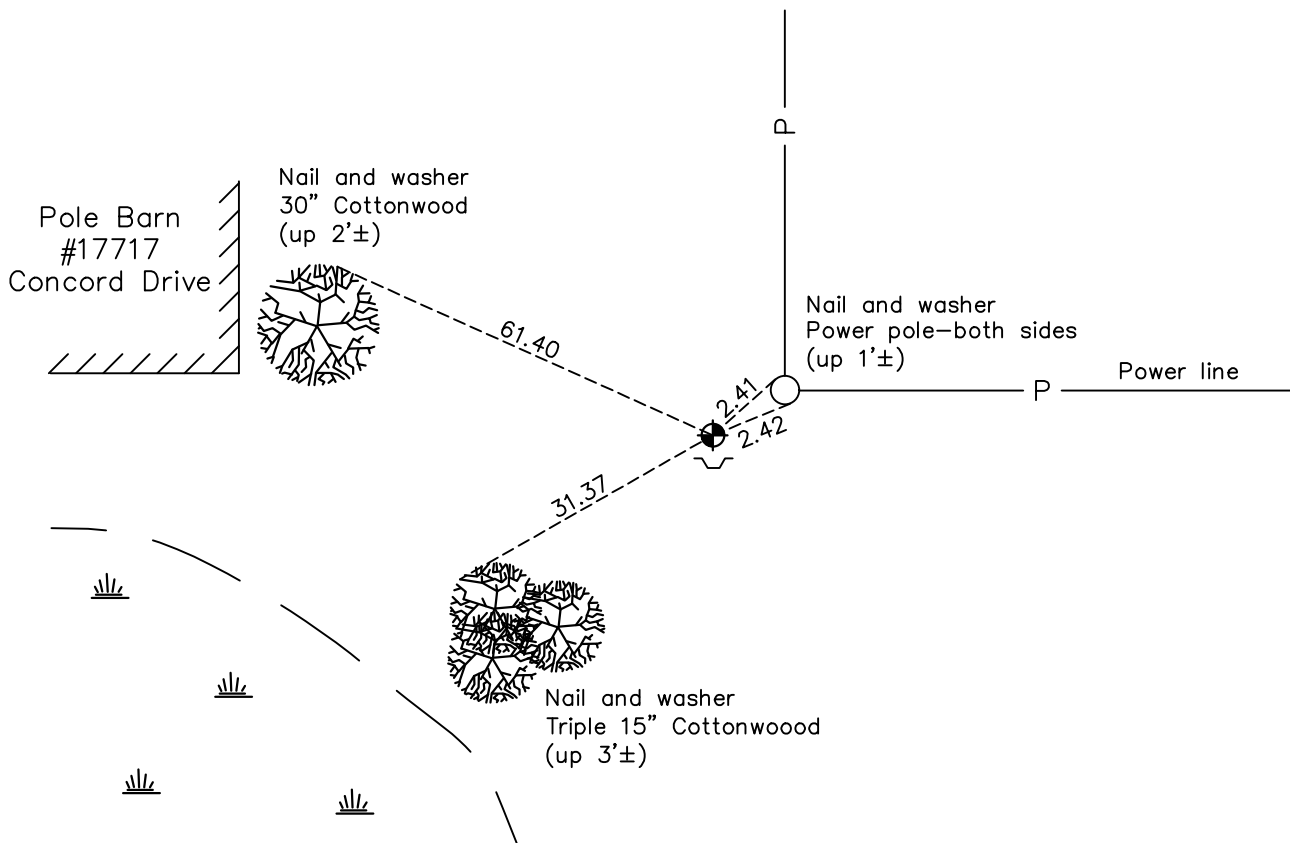
West 1/4 Corner of Sec. 5 Township 32 Range 23

On the 20th day of July, 1964, the described corner was evidenced by a granite monument

and to perpetuate the location of said corner, at the exact location thereof, a permanent marker was placed consisting of a cast iron monument with sign & post on south side

AND on the 4th day of February, 2021, said permanent marker was found down 0.5 ± and the ties were updated.

Updated reference ties are as shown below.



Revision Date
7/02/2021

N.A.D. 1983 Coordinates
 (1996 Adjustment)

County Project Coordinates	
Northing	<u>193444.4617</u>
Easting	<u>505603.2928</u>
Date	<u>8/15/96</u>

I hereby certify that this United States public land survey monument record is correct and complete to the best of my knowledge and belief.

David Zieglmeier Date 5/31/22

David M. Zieglmeier Anoka County Deputy Surveyor
 Minnesota License Number 46179

HISTORY OF GOVERNMENT CORNER

Page No. 11

County of Anoka

State of Minnesota

West 1/4 Corner of Sec. 5 Township 32 Range 23

CORNER HISTORY:

February 1855 - This corner was established by Hiram Taylor, Deputy Surveyor. Taylor marked the position by "Set quarter section post" with one bearing tree marked as an accessory.

April 1951 - Egan, Field & Novak found a granite monument and updated the ties.

June 16, 1961 - R.M. Knudsen found a granite monument and updated the ties.

July 20, 1964 - Found granite monument up 1.5'± and updated ties.

July 18, 1966 - Found granite monument and updated ties.

June 15, 1971 - Found granite monument leaning and replaced with a cast iron monument up 0.1'± using corner ties. Updated ties.

June 5, 1975 - Found cast iron monument and updated ties.

June 22, 1978 - Found cast iron monument and updated ties.

June 22, 1981 - Found cast iron monument and updated ties.

June 25, 1984 - Found cast iron monument and updated ties.

November 7, 1990 - Found cast iron monument and updated ties.

August 8, 1996 - Found cast iron monument and updated ties.

August 15, 1996 - Found cast iron monument and updated ties. Established NAD 1983 (1996 adj.) Anoka County project coordinates by static GPS methods.

March 11, 2011 - Found cast iron monument broken off. Checked corner ties to center fin of base.

March 28, 2011 - Found broken cast iron monument and verified position of center fin by static GPS methods.

April 18, 2001 - Replaced broken cast iron monument with new cast iron monument using static GPS methods. Verified position by VRS GPS methods. Updated ties. Set a sign and post on the south side.

February 17, 2017 - Found cast iron monument and updated ties.

February 4, 2021 - Found cast iron monument down 0.5'± and updated ties. Verified position by VRS GPS