

CERTIFICATE OF LOCATION OF GOVERNMENT CORNER

County of Anoka

State of Minnesota

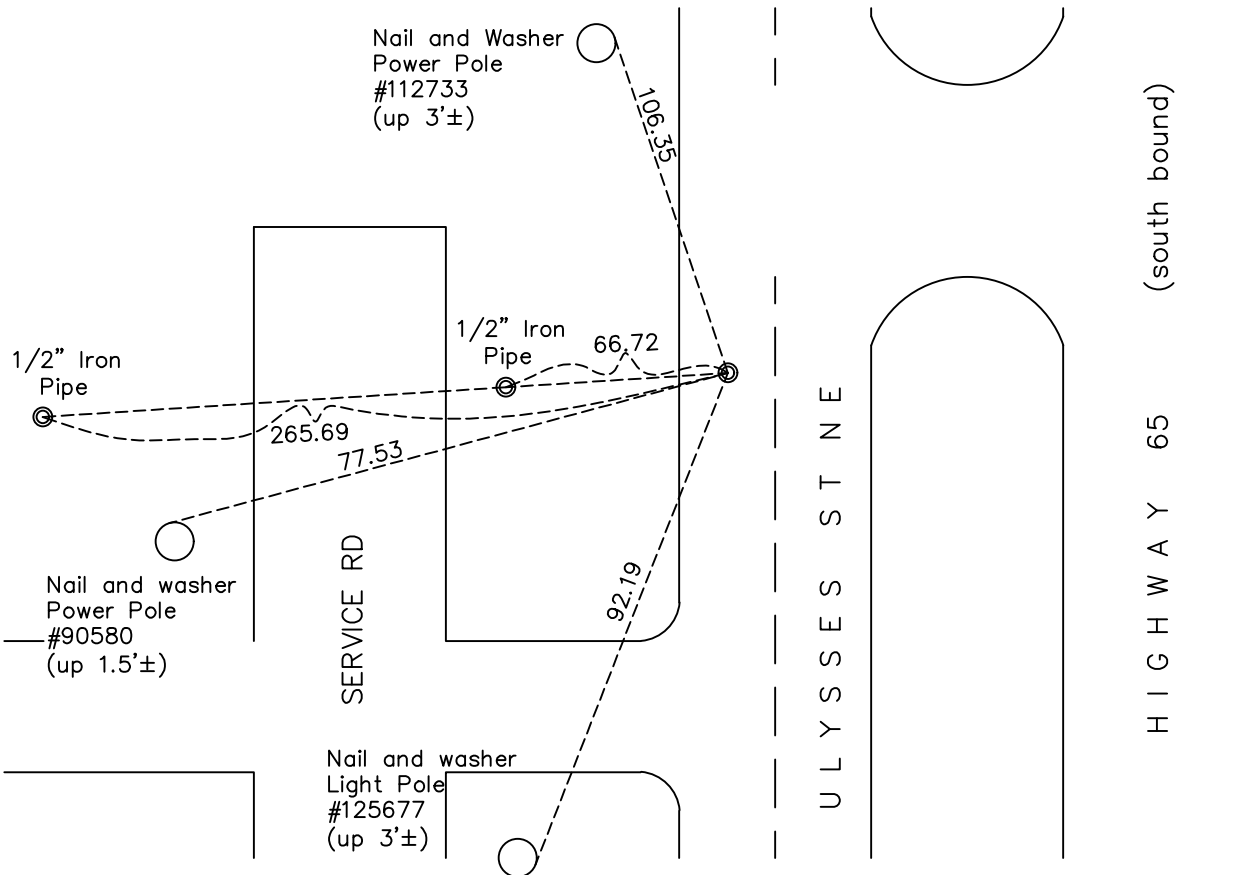
Center Corner of Sec. 5 Township 32 Range 23

On the 10th day of September, 1969, the described corner was evidenced by a 1/2" Iron Pipe centered above a granite monument

and to perpetuate the location of said corner, at the exact location thereof, a permanent marker was placed consisting of a Cast Iron Monument set flush above granite monument

AND on the 19th day of July, 2023, said permanent marker was reset w/ 2' Rebar and punched aluminum cap set in concrete. After setting, established coordinates & updated ties.

Updated reference ties are as shown below.



Revision Date

10/04/2023

N.A.D. 1983 Coordinates
(2011 Adjustment)

County Project Coordinates	
Northing	<u>193476.236</u>
Easting	<u>508254.402</u>
Date	<u>7/19/2023</u>

I hereby certify that this United States public land survey monument record is correct and complete to the best of my knowledge and belief.

David Zieglsmeier Date 12/11/23

David M. Zieglsmeier, Anoka County Surveyor
Minnesota License Number 46179

HISTORY OF GOVERNMENT CORNER

Page No. 12

County of Anoka

State of Minnesota

Center Corner of Sec. 5 Township 32 Range 23

CORNER HISTORY:

September 19, 1922 - Found granite monument, ties by Anoka County Highway Department

June 16, 1961 - Found iron pipe over granite monument and the ties were updated.

April 15, 1963 - Found 1/2" Iron Pipe centered above a granite monument and ties were updated.

July 18, 1966 - Found pinched 1/2" Iron Pipe over granite monument and the ties were updated.

September 10, 1969 - Found granite monument down 1.2'±. Set Cast Iron Monument flush on top of granite and ties were updated.

June 15, 1971; July 20, 1981; July 8, 1984; October 18, 1991; July 12, 1992; August 15, 1996 - Found cast iron monument and updated ties.

June 13, 2017 - Found 1' Cast Iron Monument, on top of granite, flush with roadway. Coordinates verified by Static GPS method and ties were updated to prepare for removal.

July 19, 2023 - Reset Center position with a 2' Rebar and punched aluminum cap set in concrete using historical ties. After setting, established coordinates with ACS RTK GPS method and updated ties.