

CERTIFICATE OF LOCATION OF GOVERNMENT CORNER

County of Anoka

State of Minnesota

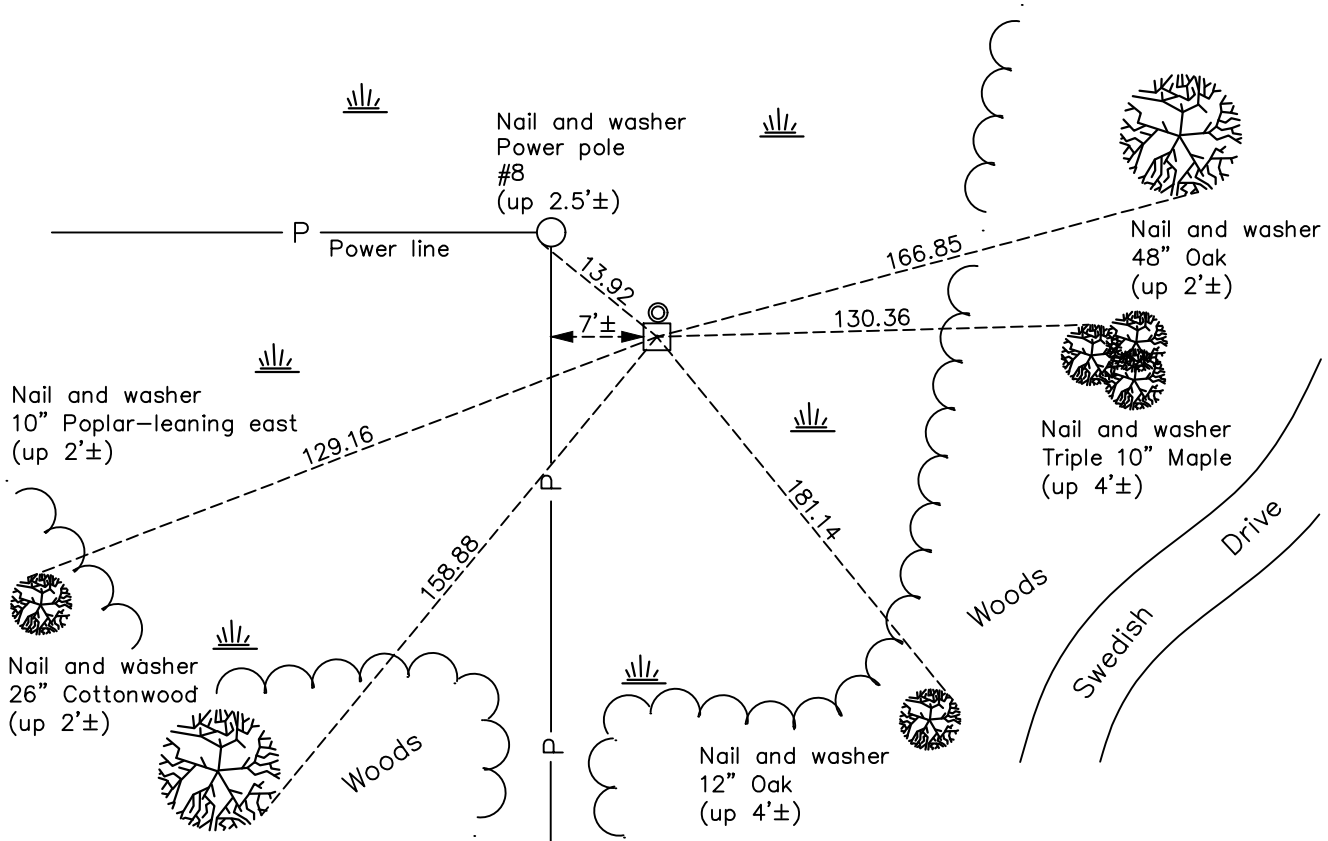
East 1/4 Corner of Sec. 5 Township 32 Range 23

On the 2nd day of February, 1961, the described corner was evidenced by a concrete monument

and to perpetuate the location of said corner, at the exact location thereof, a permanent marker was placed consisting of the same concrete monument with an iron pipe on the north side

AND on the 24th day of August, 2017, said permanent marker was replaced with a 2" x 2" steel Telspar monument up 1'± w/ "County Surveyor" cap. Updated ties & set sign & post north.

Updated reference ties are as shown below.



Revision Date
 7/02/2021

N.A.D. 1983 Coordinates
 (1996 Adjustment)

County Project Coordinates	
Northing	193508.0846
Easting	510887.7589
Date	1/28/02

I hereby certify that this United States public land survey monument record is correct and complete to the best of my knowledge and belief.

David Zieglmeier Date 5/31/22

David M. Zieglmeier Anoka County Deputy Surveyor
 Minnesota License Number 46179

HISTORY OF GOVERNMENT CORNER

Page No. 13

County of Anoka

State of Minnesota

East 1/4 Corner of Sec. 5 Township 32 Range 23

CORNER HISTORY:

February 1855 - This corner was established by Hiram Taylor, Deputy Surveyor. Taylor marked the position by "Set quarter section post" with one bearing tree marked as an accessory.

February 2, 1961 - Found concrete monument up 1'± in swamp with an iron on the north face. Updated ties.

July 13, 1964 - Found concrete monument and updated ties.

January 21, 1974 - Found concrete monument and updated ties.

January 31, 1978 - Found concrete monument and updated ties.

June 25, 1984 - Found concrete monument and updated ties.

December 31, 1990 - Found concrete monument and updated ties.

September 25, 1997 - Found concrete monument and updated ties.

January 28, 2002 - Found concrete monument and updated ties. Established NAD 1983 (1996 adj.) Anoka County project coordinates by static GPS methods.

March 17, 2011 - Found concrete monument up 0.5'± and updated ties.

August 7, 2017 - Found concrete monument with top broken off. Set temporary spike using VRS GPS methods.

August 24, 2017 - Replaced broken concrete monument with a 2" x 2" steel Telspar w/punch marked cap up 1'± using static GPS methods. Updated ties. Set sign and post on the north side.

April 15, 2021 - Conditions too wet to access monument.