

# CERTIFICATE OF LOCATION OF GOVERNMENT CORNER

County of Anoka

State of Minnesota

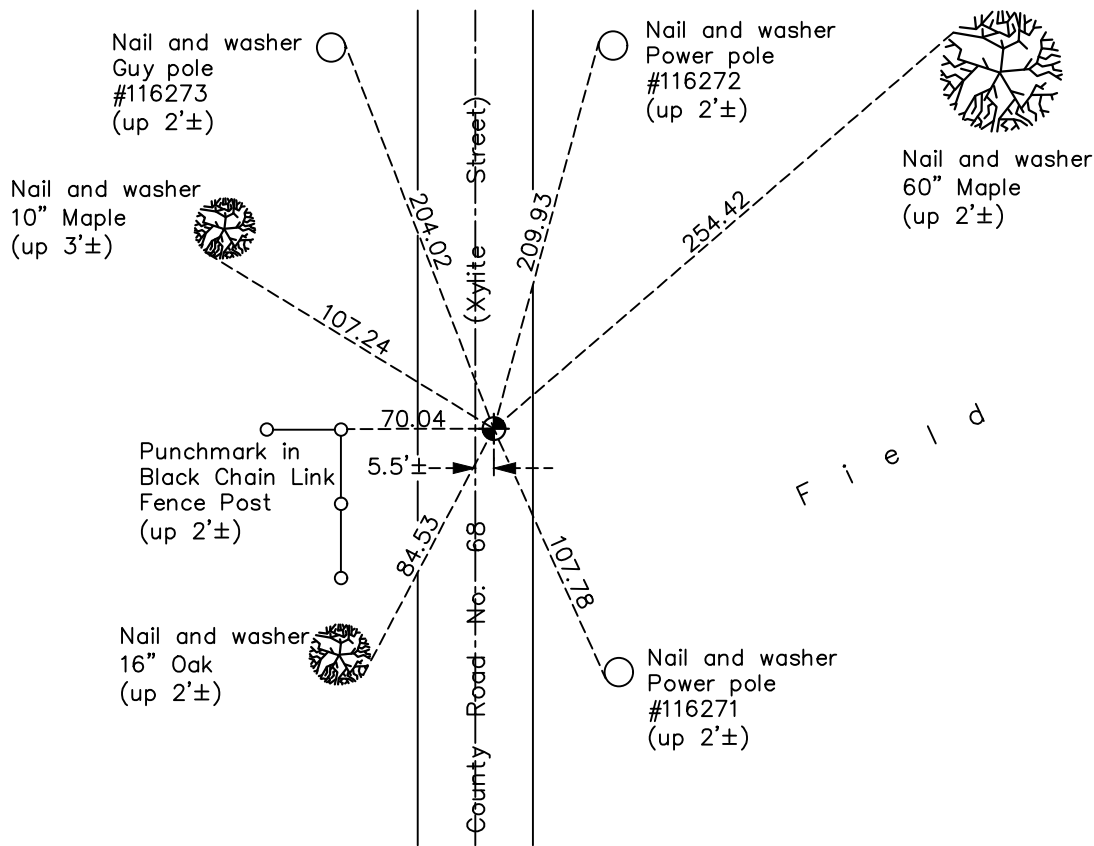
## West 1/4 Corner of Sec. 3 Township 32 Range 23

On the 4th day of January, 1961, the described corner was evidenced by an iron pipe

and to perpetuate the location of said corner, at the exact location thereof, a permanent marker was placed consisting of a cast iron monument

AND on the 5th day of February, 2021, said permanent marker was found flush and the ties were updated. Position of corner verified by VRS GPS method.

Updated reference ties are as shown below.



N

S

ANOKA COUNTY SURVEYOR

Revision Date

7/02/2021

N.A.D. 1983 Coordinates  
(1996 Adjustment)

County Project Coordinates	
Northing	<u>193400.8647</u>
Easting	<u>516148.8833</u>
Date	<u>8/01/96</u>

I hereby certify that this United States public land survey monument record is correct and complete to the best of my knowledge and belief.

*David Zieglmeier* Date 5/31/22

David M. Zieglmeier Anoka County Deputy Surveyor  
Minnesota License Number 46179

# HISTORY OF GOVERNMENT CORNER

Page No. 14

County of Anoka

State of Minnesota

West 1/4 Corner of Sec. 3 Township 32 Range 23

## **CORNER HISTORY:**

February 1855 - This corner was established by Hiram Taylor, Deputy Surveyor. Taylor marked the position by "Set quarter section post" with two bearing trees marked as accessories.

January 4, 1961 - Set iron flush in blacktop road using area resurvey. Established ties to iron.

July 8, 1964 - Found iron in blacktop road and updated ties.

August 20, 1969 - Found iron and replaced with a cast iron monument flush. Updated ties.

June 2, 1971 - Found cast iron monument and updated ties.

August 21, 1973 - Found cast iron monument down. Raised flush and updated ties.

June 6, 1975 - Found cast iron monument and updated ties.

June 6, 1978 - Found cast iron monument and updated ties.

June 26, 1981 - Found cast iron monument and updated ties.

June 25, 1984 - Found cast iron monument and updated ties.

November 7, 1990 - Found cast iron monument and updated ties.

October 18, 1991 - Found cast iron monument and updated ties.

August 1, 1996 - Found cast iron monument and updated ties. Established NAD 1983 (1996 adj.) Anoka County project coordinates by static GPS methods.

March 25, 2011 - Found cast iron monument and updated ties.

March 9, 2017 - Found cast iron monument and updated ties.

April 8, 2020 - Reset with a cast iron monument, set flush with surface, after road construction using static GPS methods and the ties were updated. Position verified by VRS GPS method.

February 5, 2021 - Found cast iron monument flush and updated ties. Position verified by VRS GPS method.