

CERTIFICATE OF LOCATION OF GOVERNMENT CORNER

County of Anoka

State of Minnesota

NW Corner of
NE1/4 of SE1/4

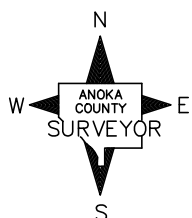
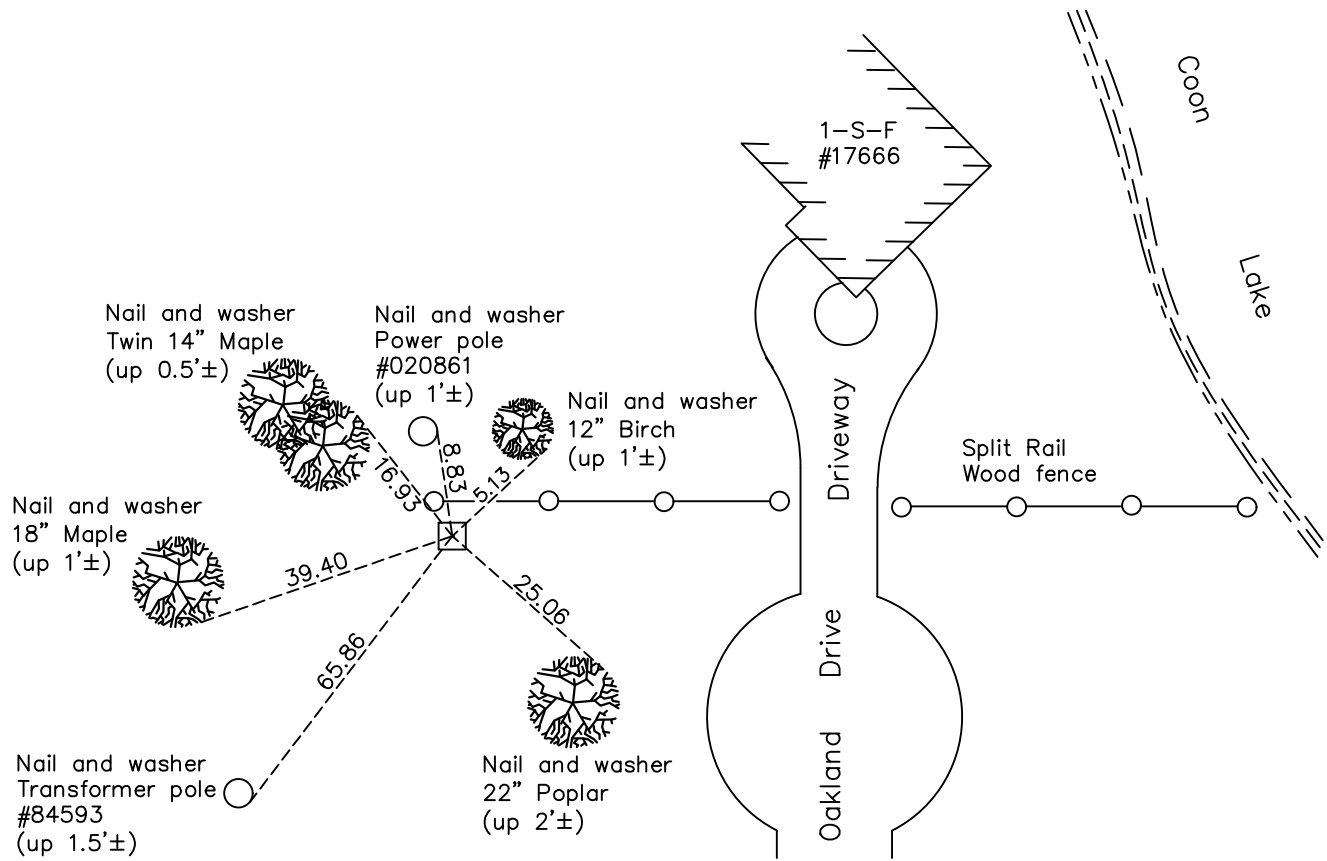
Corner of Sec. 3 Township 32 Range 23

On the 29th day of May, 1960, the described corner was evidenced by a concrete monument

and to perpetuate the location of said corner, at the exact location thereof, a permanent marker was placed consisting of the same concrete monument

AND on the 6th day of February, 2023, said permanent marker was found up 0.3'± with an "X" in the top and the Position Coordinates were verified using County RTK GPS method

Updated reference ties are as shown below.



Revision Date
2/08/2023

N.A.D. 1983 Coordinates
(1996 Adjustment)

County Project Coordinates	
Northing	<u>193231.0115</u>
Easting	<u>520037.6020</u>
Date	<u>N/A</u>

I hereby certify that this United States public land survey monument record is correct and complete to the best of my knowledge and belief.
David Zieglmeier Date 2/28/23
 David M. Zieglmeier Anoka County Deputy Surveyor
 Minnesota License Number 46179

HISTORY OF GOVERNMENT CORNER

Page No. 15

County of Anoka

State of Minnesota

**NW Corner of
NE1/4 of SE1/4**

Corner of Sec. 3 Township 32 Range 23

CORNER HISTORY:

May 29, 1960 - R.M. Knudsen found a concrete monument and updated the ties.

July 8, 1964 - Found concrete monument up 1'± on east/west fence line. Updated ties.

July 20, 1966 - Found concrete monument and updated ties.

May 24, 1971 - Found concrete monument and updated ties.

June 5, 1975 - Found concrete monument and updated ties.

June 6, 1978 - Found concrete monument and updated ties.

June 23, 1981 - Found concrete monument and updated ties.

July 16, 1984 - Found concrete monument and updated ties.

October 18, 1991 - Found concrete monument and updated ties.

April 6, 2011 - Found concrete monument up 0.5'± with top partially broken off. Updated ties.

April 25, 2011 - Cut un-even part of concrete monument top off in order to make flat. Sawed an "X" into the top of the monument for location purposes. Monument is now up 0.3'± from surface. Updated ties.

February 9, 2017 - Found concrete monument up 0.3'± with an "X" in the top. Updated ties.

January 15, 2021 - Found concrete monument up 0.3'± with an "X" in the top. Updated ties.

February 6, 2023 - Found concrete monument up 0.3'± with an 'X' in the top and position coordinates were verified by County RTK GPS method.