

CERTIFICATE OF LOCATION OF GOVERNMENT CORNER

County of Anoka

State of Minnesota

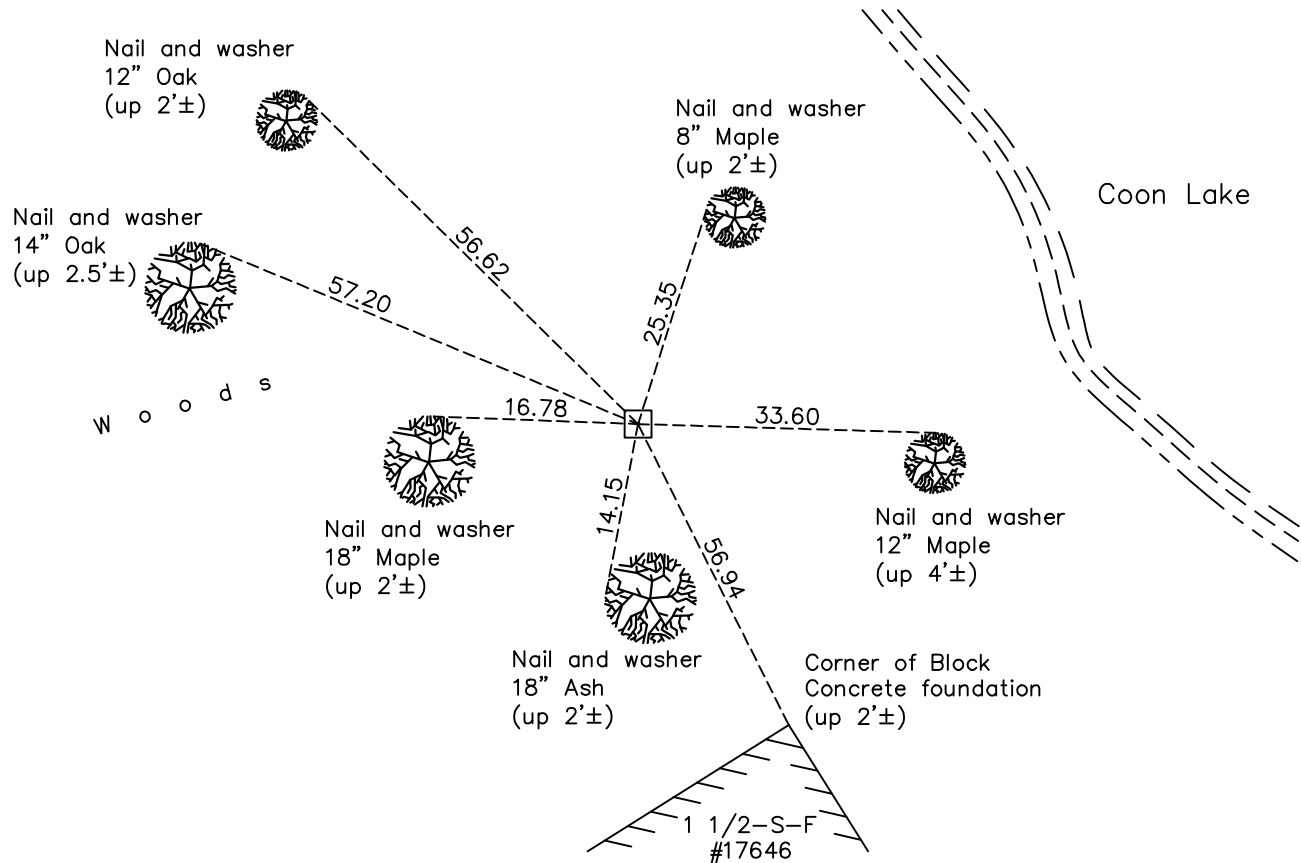
Witness Corner of Sec. 3 Township 32 Range 23
(on East-West 1/4 line)

On the 29th day of May, 1960, the described corner was evidenced by a concrete
monument

and to perpetuate the location of said corner, at the exact location thereof, a permanent marker
was placed consisting of the same concrete monument

AND on the 6th day of February, 2023, said permanent marker was found up 0.5'± with a
P.K. nail in top of monument. Position Coordinates were verified using County RTK GPS method.

Updated reference ties are as shown below.



Revision Date
2/08/2023

N.A.D. 1983 Coordinates
(1996 Adjustment)

County Project Coordinates	
Northing	<u>193234.6862</u>
Easting	<u>520284.4220</u>
Date	<u>3/05/02</u>

I hereby certify that this United States public land survey monument record is correct and complete to the best of my knowledge and belief.

David Zieglmeier Date 2/28/23

David M. Zieglmeier Anoka County Deputy Surveyor
Minnesota License Number 46179

HISTORY OF GOVERNMENT CORNER

Page No. 16

County of Anoka

State of Minnesota

Witness Corner of Sec. 3 Township 32 Range 23
(on East–West 1/4 line)

CORNER HISTORY:

May 29, 1960 - R.M. Knudsen found a concrete monument and updated the ties.

July 8, 1964 - Found concrete monument up 1'± and updated ties.

July 20, 1966 - Found concrete monument and updated ties.

May 24, 1971 - Found concrete monument and updated ties.

June 5, 1975 - Found concrete monument and updated ties.

June 6, 1978 - Found concrete monument and updated ties.

June 23, 1981 - Found concrete monument and updated ties.

July 16, 1984 - Found concrete monument and updated ties.

October 18, 1991 - Found concrete monument and updated ties.

August 12, 1996 - Found concrete monument and updated ties.

March 5, 2002 - Found concrete monument and updated ties. Established NAD 1983 (1996 adj.) Anoka County project coordinates by static GPS methods.

April 6, 2011 - Found concrete monument up 0.5'± with a P.K. nail in the top. Updated ties.

February 9, 2017 - Found concrete monument up 0.5'± with a P.K. nail in the top. Updated ties.

January 15, 2021 - Found concrete monument up 0.5'± with a P.K. nail in the top. Updated ties and verified position of corner by VRS GPS method.

February 6, 2023 - Found concrete monument up 0.5'± with a P.K. nail in the top of the concrete monument. Position coordinates were verified by County RTK GPS method.