

# CERTIFICATE OF LOCATION OF GOVERNMENT CORNER

County of Anoka

State of Minnesota

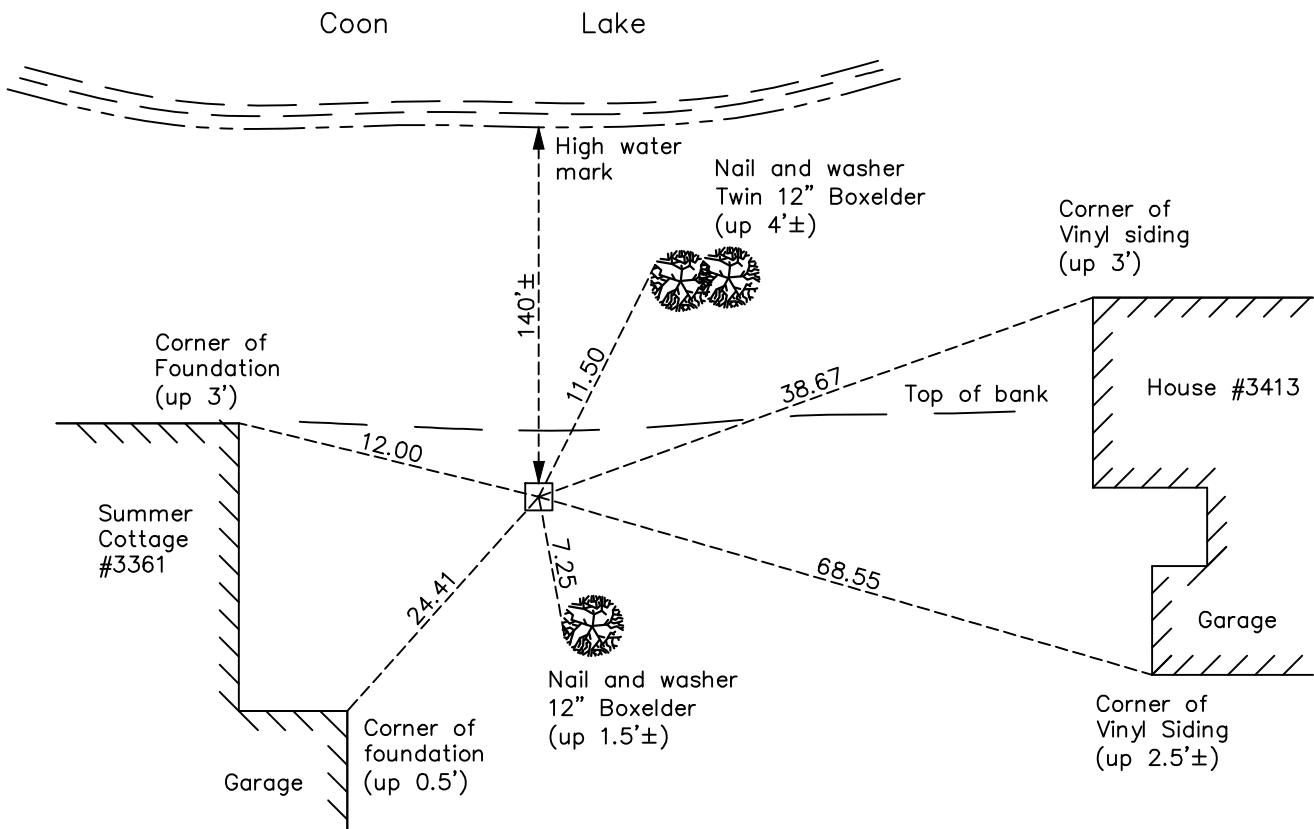
## Meander Corner of Sec. 3 Township 32 Range 23 (on east line of section)

On the 7th day of February, 2023, the described corner was evidenced by a concrete monument

and to perpetuate the location of said corner, at the exact location thereof, a permanent marker was placed consisting of a cast iron monument set down 0.4'±

AND on the 7th day of February, 2023, said permanent marker was replaced found NE leaning concrete monument with a CIM set down 0.4'± using historic ties to foundations. Ties then updated.

Updated reference ties are as shown below.



Revision Date

02/08/2023

N.A.D. 1983 Coordinates  
(2011 Adjustment)

| County Project Coordinates |            |
|----------------------------|------------|
| Northing                   | 192561.792 |
| Easting                    | 521325.293 |
| Date                       | 2/07/2023  |

I hereby certify that this United States public land survey monument record is correct and complete to the best of my knowledge and belief.

*David Zieglmeier* Date 2/28/23

David M. Zieglmeier Anoka County Deputy Surveyor  
Minnesota License Number 46179

# HISTORY OF GOVERNMENT CORNER

Page No. 18

County of Anoka

State of Minnesota

## Meander Corner of Sec. 3 Township 32 Range 23 (on east line of section)

### **CORNER HISTORY:**

February 1855 - This corner was established by Hiram Taylor, Deputy Surveyor. Taylor marked the position by "Over lake on ice, Set meander post, white-birch for post" with two bearing trees marked as accessories.

May 29, 1960 - Robert M. Knudsen found a concrete monument and updated the ties.

July 8, 1964 - Found concrete monument up 0.6'± and updated ties.

July 19, 1966 - Found concrete monument and updated ties.

May 24, 1971 - Found concrete monument and updated ties.

June 5, 1975 - Found concrete monument and updated ties.

June 6, 1978 - Found concrete monument and updated ties.

June 25, 1981 - Found concrete monument and updated ties.

July 12, 1984 - Found concrete monument and updated ties.

November 7, 1990 - Found concrete monument and updated ties.

October 18, 1991 - Found concrete monument and updated ties.

August 1, 1996 - Found concrete monument and updated ties.

January 3, 2002 - Found concrete monument up 0.5'± and updated ties. Established NAD 1983 (1996 adj.) Anoka County Project coordinates by static GPS methods.

April 6, 2011 - Found concrete monument up 0.5'± and updated ties. Ground on north side of monument eroding away.

February 2017 - Found concrete monument up 0.5'± and updated ties. Ground on north side of monument eroding away.

February 4, 2021 - Found concrete monument up 0.5'± and updated ties. Ground on north side of monument eroding away. Position verified by VRS GPS method.

February 7, 2023 - Replaced found leaning NE concrete monument up 0.5'± with a Cast Iron Monument set down 0.4'± using historic ties to foundations of nearby houses. Ties were updated after replacement. Position required Coordinates to be updated using County RTK GPS method to 2011 adjustment. Previous Coordinates NAD 1983 (1996 adj.) Northing 192561.8900; Easting 521325.5158