

CERTIFICATE OF LOCATION OF GOVERNMENT CORNER

County of Anoka

State of Minnesota

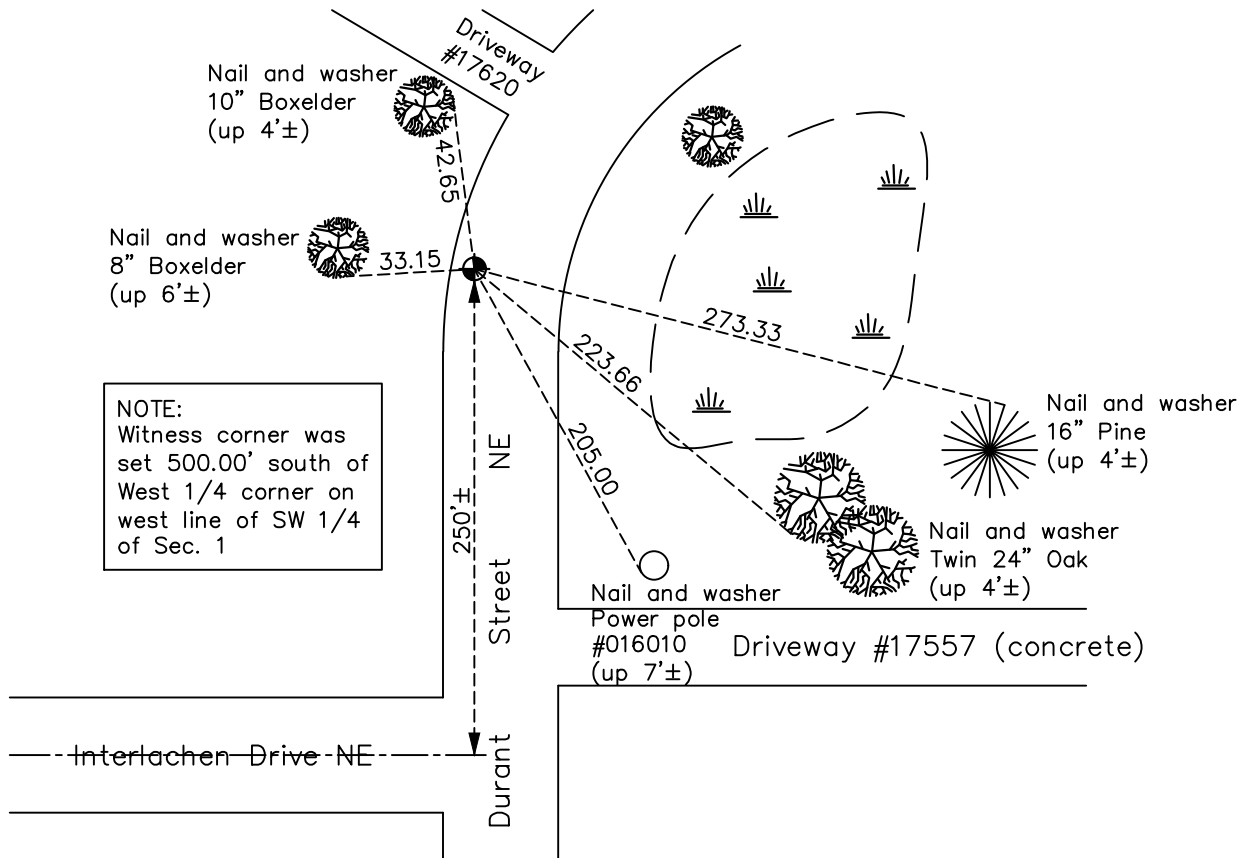
Witness Corner of Sec. 1 Township 32 Range 23
(on west line of SW 1/4)

On the 22nd day of August, 2014, the described corner was evidenced by area resurvey

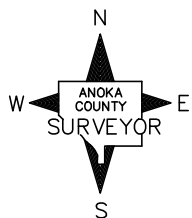
and to perpetuate the location of said corner, at the exact location thereof, a permanent marker was placed consisting of a cast iron monument 5'± west of the center line

AND on the 5th day of February, 2021, said permanent marker was found flush and the
ties were updated

Updated reference ties are as shown below.



NOTE:
Witness corner was set 500.00' south of West 1/4 corner on west line of SW 1/4 of Sec. 1



Revision Date
7/02/2021

N.A.D. 1983 Coordinates
(1996 Adjustment)

County Project Coordinates	
Northing	<u>192960.6945</u>
Easting	<u>526806.8613</u>
Date	<u>8/19/14</u>

I hereby certify that this United States public land survey monument record is correct and complete to the best of my knowledge and belief.

David Zieglmeier Date 5/31/22

David M. Zieglmeier Anoka County Deputy Surveyor
Minnesota License Number 46179

HISTORY OF GOVERNMENT CORNER

County of Anoka

State of Minnesota

Witness Corner of Sec. 1 Township 32 Range 23
(on west line of SW 1/4)

CORNER HISTORY:

August 22, 2014 - Set cast iron monument 500' South of West 1/4 corner using area resurvey. Established ties to monument. Verified position by VRS GPS methods.

February 10, 2017 - Found cast iron monument flush. Verified position by VRS GPS methods. Updated ties.

February 5, 2021 - Found cast iron monument flush. Verified position by VRS GPS methods. Updated ties.