

CERTIFICATE OF LOCATION OF GOVERNMENT CORNER

County of Anoka

State of Minnesota

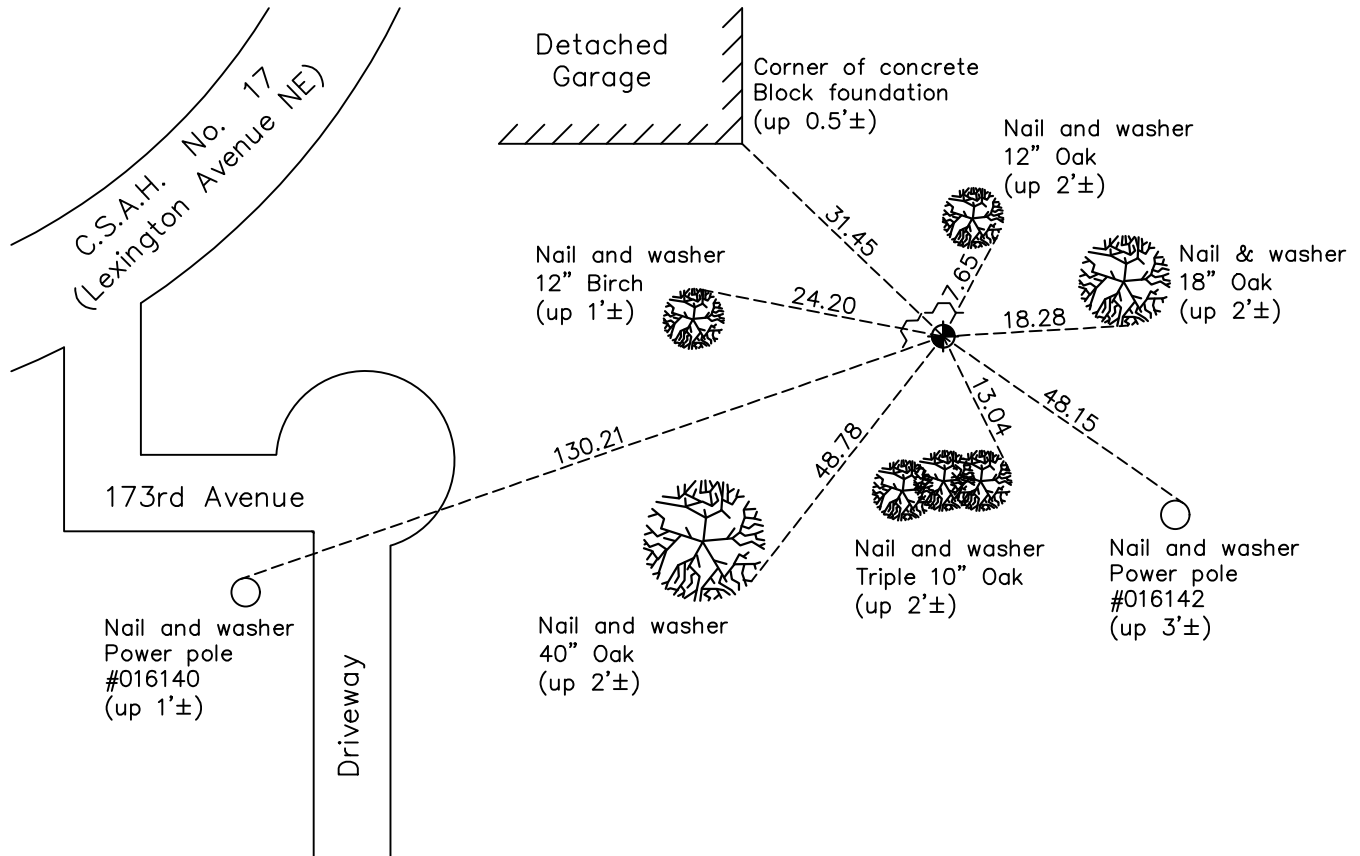
Southeast Corner of Sec. 1 Township 32 Range 23

On the 21st day of June, 1961, the described corner was evidenced by a concrete monument

and to perpetuate the location of said corner, at the exact location thereof, a permanent marker was placed consisting of a cast iron monument with "State Wildlife Management" signs on the north and northwest sides

AND on the 17th day of February, 2021, said permanent marker was found flush and the ties were updated

Updated reference ties are as shown below.



Revision Date
7/02/21

N.A.D. 1983 Coordinates
(1996 Adjustment)

County Project Coordinates	
Northing	<u>190396.8850</u>
Easting	<u>532039.4622</u>
Date	<u>8/06/96</u>

I hereby certify that this United States public land survey monument record is correct and complete to the best of my knowledge and belief.

David Zieglmeier Date 5/31/22

David M. Zieglmeier Anoka County Deputy Surveyor
Minnesota License Number 46179

HISTORY OF GOVERNMENT CORNER

Page No. 22

County of Anoka

State of Minnesota

Southeast Corner of Sec. 1 Township 32 Range 23

CORNER HISTORY:

August 1847 - This corner was established by James M. Marsh, Deputy Surveyor. Marsh marked the position by "Set post at corner to sections 1, 6, 7 & 12" with two bearing trees marked as accessories.

February 7, 1956 - Anoka County highway department found a concrete monument up 0.2'± at intersection of fences and updated the ties.

June 21, 1961 - Found concrete monument up 0.3'± at intersection of fences and updated ties.

July 9, 1964 - Found concrete monument and updated ties.

July 21, 1966 - Found concrete monument and updated ties.

May 25, 1971 - Found concrete monument and updated ties.

June 3, 1975 - Found concrete monument and replaced with a cast iron monument flush. Updated ties.

June 5, 1978 - Found cast iron monument and updated ties.

June 23, 1981 - Found cast iron monument and updated ties.

June 26, 1984 - Found cast iron monument and updated ties.

December 31, 1990 - Found cast iron monument and updated ties.

November 15, 1991 - Found cast iron monument and updated ties.

August 6, 1996 - Found cast iron monument and updated ties. Established NAD 1983 (1996 adj.) Anoka County project coordinates by static GPS methods.

January 24, 2002 - Found cast iron monument and updated ties.

April 4, 2011 - Found cast iron monument and updated ties.

February 7, 2017 - Found cast iron monument flush and updated ties.

February 17, 2021 - Found cast iron monument flush and updated ties. Position verified by VRS GPS method.