

# CERTIFICATE OF LOCATION OF GOVERNMENT CORNER

County of Anoka

State of Minnesota

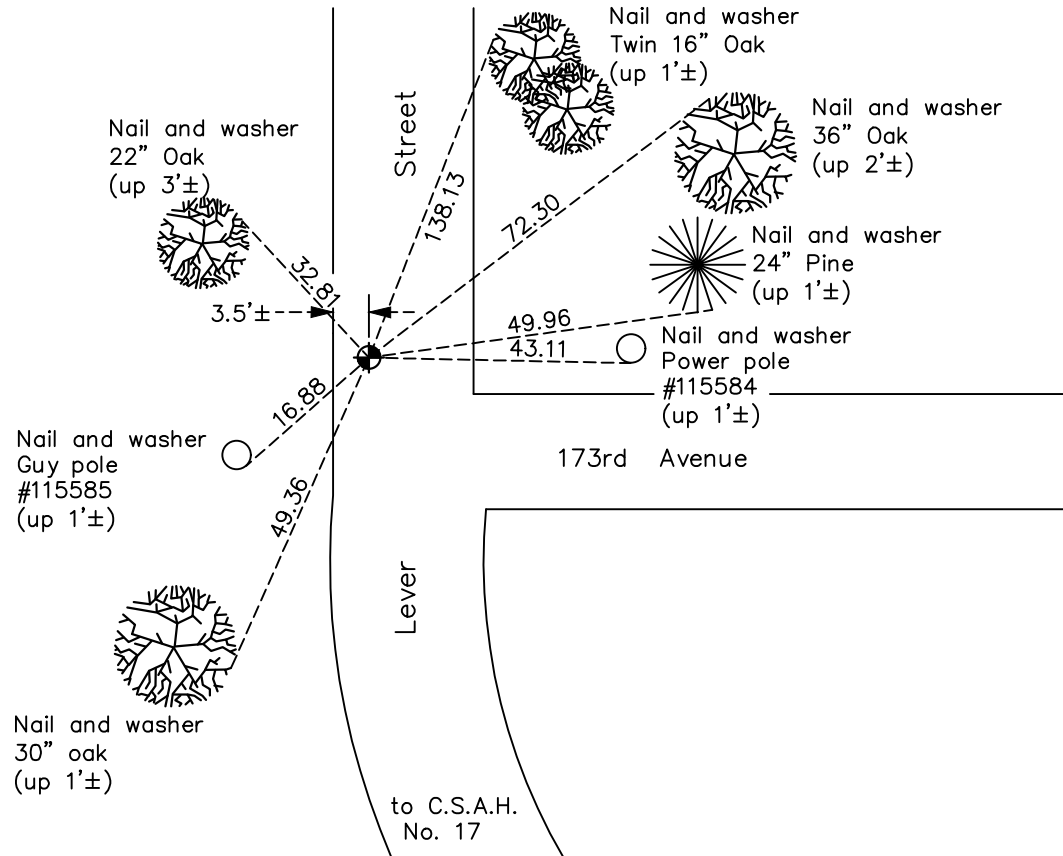
## South 1/4 Corner of Sec. 1 Township 32 Range 23

On the 21st day of June, 1961, the described corner was evidenced by a 3/4" iron pipe

and to perpetuate the location of said corner, at the exact location thereof, a permanent marker was placed consisting of a cast iron monument

AND on the 17th day of February, 2021, said permanent marker was found flush and the ties were updated

Updated reference ties are as shown below.



Revision Date  
 7/02/2021

N.A.D. 1983 Coordinates  
 (1996 Adjustment)

County Project Coordinates	
Northing	190627.7364
Easting	529409.2618
Date	8/07/96

I hereby certify that this United States public land survey monument record is correct and complete to the best of my knowledge and belief.

*David Zieglmeier* Date 5/31/22

David M. Zieglmeier Anoka County Deputy Surveyor  
 Minnesota License Number 46179

# HISTORY OF GOVERNMENT CORNER

Page No. 23

County of Anoka

State of Minnesota

## South 1/4 Corner of Sec. 1 Township 32 Range 23

### **CORNER HISTORY:**

February 1855 - This corner was established by Hiram Taylor, Deputy Surveyor. Taylor marked the position by "Set quarter section post" with two bearing trees marked as accessories.

February 7, 1956 - Anoka County highway department found an iron pipe and updated the ties.

June 21, 1961 - Found 3/4" iron pipe up 0.3'± and updated ties.

July 9, 1964 - Found 3/4" iron pipe and updated ties.

July 21, 1966 - Found 3/4" iron pipe and updated ties.

September 4, 1969 - Found 3/4" iron pipe and replaced with a cast iron monument up 0.1'±. Updated ties.

May 25, 1971 - Found cast iron monument and updated ties.

June 3, 1975 - Found cast iron monument and updated ties.

June 5, 1978 - Found cast iron monument and updated ties.

June 23, 1981 - Found cast iron monument and updated ties.

June 26, 1984 - Found cast iron monument and updated ties.

July 2, 1991 - Found cast iron monument and updated ties.

November 15, 1991 - Found cast iron monument and updated ties.

August 7, 1996 - Found cast iron monument and updated ties. Established NAD 1983 (1996 adj.) Anoka County project coordinates by static GPS methods.

May 2, 2002 - Found cast iron monument. Set construction ties and updated corner ties prior to road construction. Removed monument.

June 19, 2002 - Set cast iron monument after road construction. Updated ties.

April 4, 2011 - Found cast iron monument and updated ties.

February 10, 2017 - Found cast iron monument flush. Verified position by VRS GPS methods. Updated ties.

February 17, 2021 - Found cast iron monument flush. Verified position by VRS GPS methods. Updated ties.