

CERTIFICATE OF LOCATION OF GOVERNMENT CORNER

County of Anoka

State of Minnesota

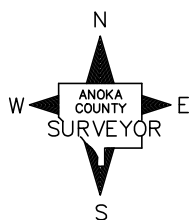
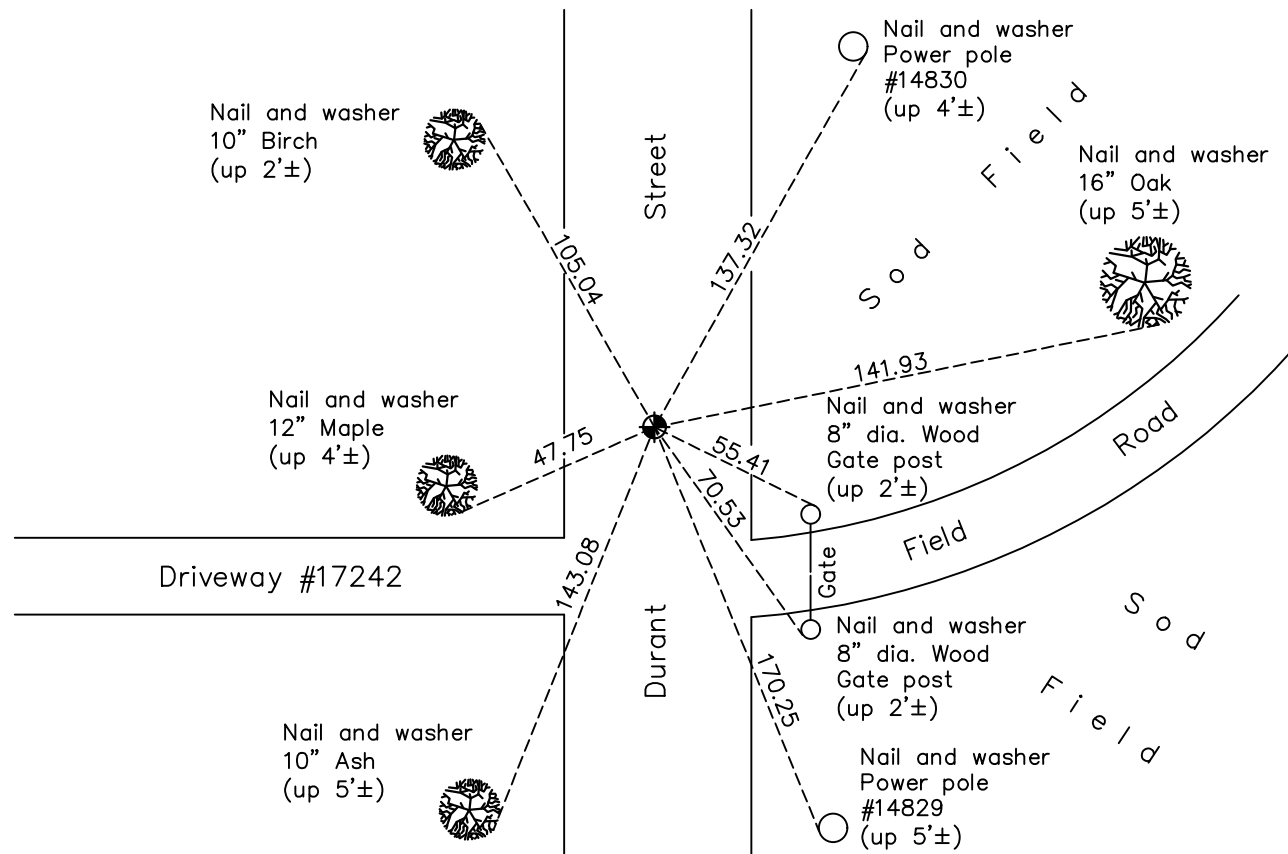
Southwest Corner of Sec. 1 Township 32 Range 23

On the 7th day of September, 1966, the described corner was evidenced by area resurvey

and to perpetuate the location of said corner, at the exact location thereof, a permanent marker was placed consisting of a cast iron monument down 4'± with a cast iron monument on top

AND on the 3rd day of March, 2021, said permanent marker was found down 0.3"± on the center line and cast iron monument was raised to the surface. Ties were updated.

Updated reference ties are as shown below.



Revision Date

7/02/2021

N.A.D. 1983 Coordinates
(1996 Adjustment)

County Project Coordinates	
Northing	<u>190782.6037</u>
Easting	<u>526807.6809</u>
Date	<u>8/31/00</u>

I hereby certify that this United States public land survey monument record is correct and complete to the best of my knowledge and belief.

David Zieglmeier Date 5/31/22

David Zieglmeier Anoka County Surveyor
Minnesota License Number 46179

HISTORY OF GOVERNMENT CORNER

Page No. 24

County of Anoka

State of Minnesota

Southwest Corner of Sec. 1 Township 32 Range 23

CORNER HISTORY:

February 1855 - This corner was established by Hiram Taylor, Deputy Surveyor. Taylor marked the position by "Set post corner to sections 1, 2, 11 & 12" with one bearing tree marked as an accessory.

September 7, 1966 - Set cast iron monument down 0.5'± in dirt road using area resurvey. Established ties to monument.

May 25, 1971 - Found cast iron monument and updated ties.

June 4, 1975 - Found cast iron monument and updated ties.

June 5, 1978 - Found cast iron monument and updated ties.

June 23, 1981 - Found cast iron monument and updated ties.

June 25, 1984 - Found cast iron monument and updated ties.

November 15, 1991 - Found cast iron monument and updated ties.

September 5, 1996 - Found cast iron monument and updated ties.

August 31, 2000 - Found cast iron monument. Set construction ties and updated corner ties prior to road construction. Established NAD 1983 (1996 adj.) Anoka County project coordinates by static GPS methods. Monument to remain 4'± under road surface after construction and was not removed.

March 6, 2001 - Set new cast iron monument flush with the surface above old monument that is down 4'± under new road surface. Updated ties.

May 4, 2011 - Found cast iron monument and updated ties.

February 10, 2017 - Found cast iron monument down 0.3'± on center line. Verified position by VRS GPS methods. Updated ties.

March 3, 2021 - Found cast iron monument down 0.3' ± and raised to the surface. Ties were updated and position verified by VRS GPS.