

# CERTIFICATE OF LOCATION OF GOVERNMENT CORNER

County of Anoka

State of Minnesota

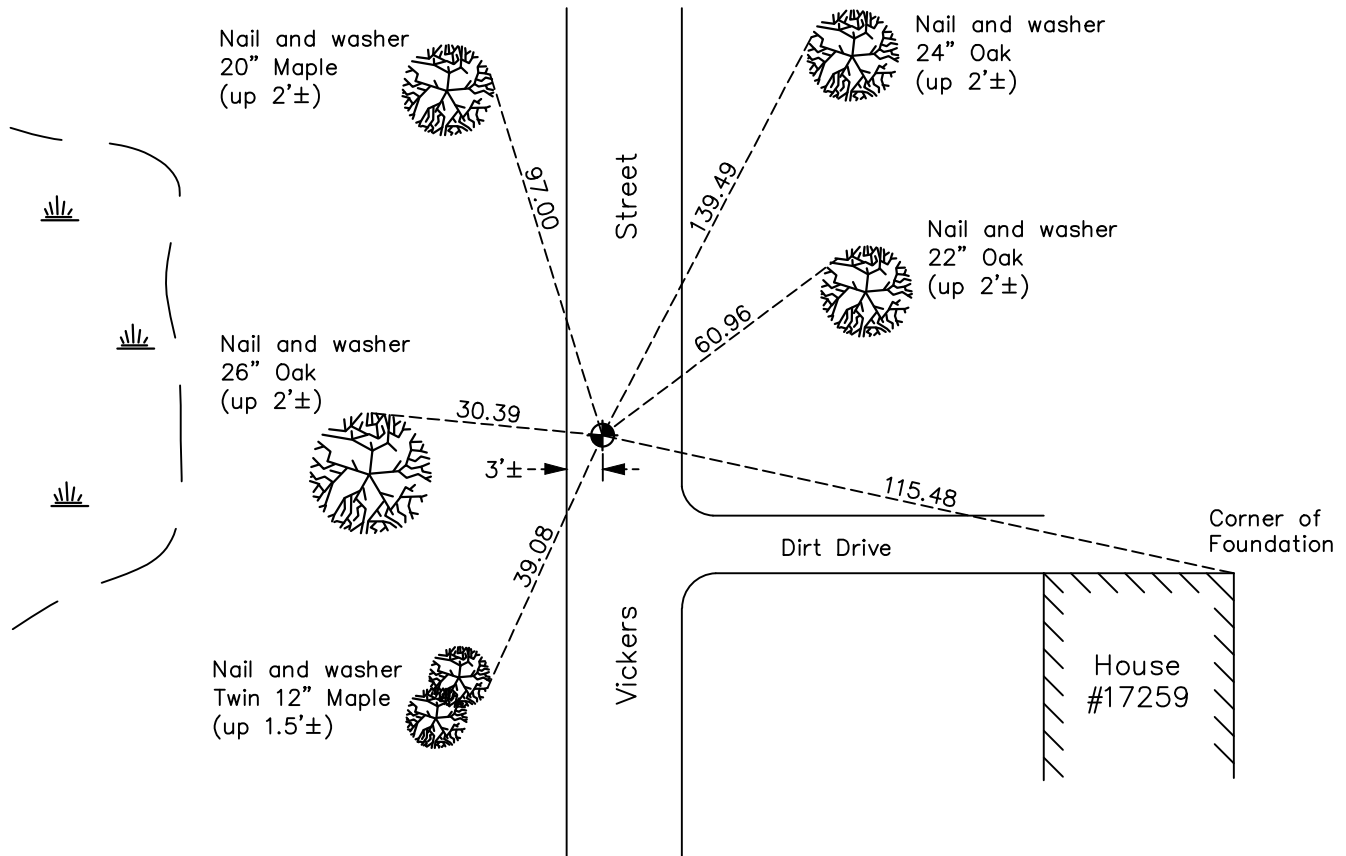
## North 1/4 Corner of Sec. 11 Township 32 Range 23

On the 1st day of April, 1974, the described corner was evidenced by area resurvey

and to perpetuate the location of said corner, at the exact location thereof, a permanent marker was placed consisting of a cast iron monument

AND on the 17th day of February, 2021, said permanent marker was found down 0.2'± and the ties were updated

Updated reference ties are as shown below.



Revision Date  
7/02/2021

N.A.D. 1983 Coordinates  
 (1996 Adjustment)

County Project Coordinates	
Northing	<u>190653.7458</u>
Easting	<u>524123.4650</u>
Date	<u>8/31/00</u>

I hereby certify that this United States public land survey monument record is correct and complete to the best of my knowledge and belief.

*David Zieglmeier* Date 5/31/22

David Zieglmeier Anoka County Surveyor  
 Minnesota License Number 46179

# HISTORY OF GOVERNMENT CORNER

Page No. 25

County of Anoka

State of Minnesota

## North 1/4 Corner of Sec. 11 Township 32 Range 23

### **CORNER HISTORY:**

February 1855 - This corner was established by Hiram Taylor, Deputy Surveyor. Taylor marked the position by "Set quarter section post" with one bearing tree marked as an accessory.

July 15, 1966 - Set cast iron monument down 0.5'± using area resurvey. Established ties to monument.

May 24, 1971 - Found cast iron monument and adjusted 0.04' east. Updated ties.

April 1, 1974 - Found cast iron monument to be in wrong location using area resurvey check. Set temporary iron pipe 17.71' north of old location using area resurvey. Established ties to iron pipe. (iron pipe replaced by cast iron monument, date unknown).

June 3, 1975 - Found cast iron monument and updated ties.

June 5, 1978 - Found cast iron monument and updated ties.

June 23, 1981 - Found cast iron monument and updated ties.

June 29, 1984 - Found cast iron monument and updated ties.

August 28, 1985 - Found cast iron monument and updated ties prior to road construction. Removed monument.

July 14, 1986 - Set cast iron monument flush after road construction. Updated ties.

September 16, 1987 - Found cast iron monument and updated ties.

August 6, 1996 - Found cast iron monument and updated ties.

August 31, 2000 - Found cast iron monument and updated ties. Established NAD 1983 (1996 adj.) Anoka County project coordinates by static GPS methods.

March 28, 2011 - Found cast iron monument down 0.2'± and updated ties.

March 9, 2017 - Found cast iron monument down 0.2'± and updated ties.

February 17, 2021 - Found cast iron monument down 0.2'± and updated ties. Position verified by VRS GPS.