

# CERTIFICATE OF LOCATION OF GOVERNMENT CORNER

County of Anoka

State of Minnesota

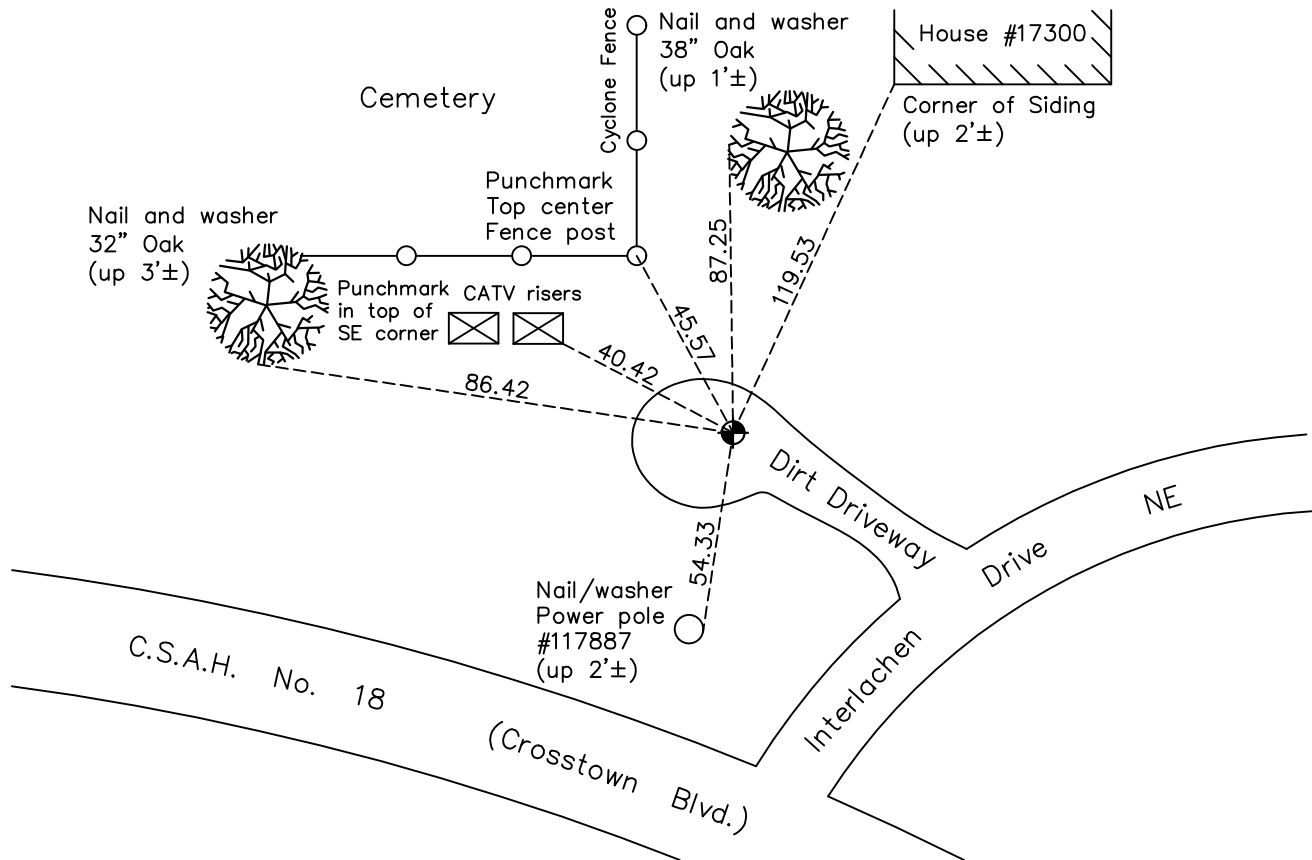
## South 1/4 Corner of Sec. 3 Township 32 Range 23

On the 22nd day of December, 1960, the described corner was evidenced by a concrete monument

and to perpetuate the location of said corner, at the exact location thereof, a permanent marker was placed consisting of a cast iron monument down 0.5'±

AND on the 10th day of March, 2021, said permanent marker was found and the ties were updated

Updated reference ties are as shown below.



Revision Date  
7/6/2021

N.A.D. 1983 Coordinates  
(1996 Adjustment)

County Project Coordinates	
Northing	<u>190645.8330</u>
Easting	<u>518746.4062</u>
Date	<u>1/03/02</u>

I hereby certify that this United States public land survey monument record is correct and complete to the best of my knowledge and belief.

*David Zieglmeier* Date 5/31/22

David Zieglmeier Anoka County Surveyor  
Minnesota License Number 46179

# HISTORY OF GOVERNMENT CORNER

Page No. 27

County of Anoka

State of Minnesota

South 1/4 Corner of Sec. 3 Township 32 Range 23

## **CORNER HISTORY:**

February 1855 - This corner was established by Hiram Taylor, Deputy Surveyor. Taylor marked the position by "Set quarter section post" with two bearing trees marked as accessories.

May 29, 1960 - Robert M. Knudsen found a concrete monument down 0.5'± and updated the ties.

December 22, 1960 - Found reinforced 6" x 4" concrete monument down 0.5'± with top broken off and an iron pipe on the north face. Updated ties.

January 26, 1961 - Found broken concrete monument and checked corner ties from old field book (1918).

July 8, 1964 - Found broken concrete monument and updated ties.

July 22, 1966 - Found broken concrete monument and updated ties.

May 25, 1971 - Found broken concrete monument and updated ties.

July 9, 1974 - Found broken concrete monument and replaced with a cast iron monument down 0.5'±. Updated ties.

June 4, 1975 - Found cast iron monument and updated ties.

June 8, 1978 - Found cast iron monument and updated ties.

June 25, 1981 - Found cast iron monument and updated ties.

October 18, 1991 - Found cast iron monument and updated ties.

August 7, 1996 - Found cast iron monument and updated ties.

January 3, 2002 - Found cast iron monument down 0.5'± and updated ties. Established NAD 1983 (1996 adj.) Anoka County project coordinates by static GPS methods.

April 12, 2011 - Found cast iron monument down 0.5'± and updated ties.

March 9, 2017 - Found cast iron monument down 0.5'± and updated ties.

March 10, 2021 - Found cast iron monument down 0.5'± and updated ties. Verified position by VRS GPS method