

CERTIFICATE OF LOCATION OF GOVERNMENT CORNER

County of Anoka

State of Minnesota

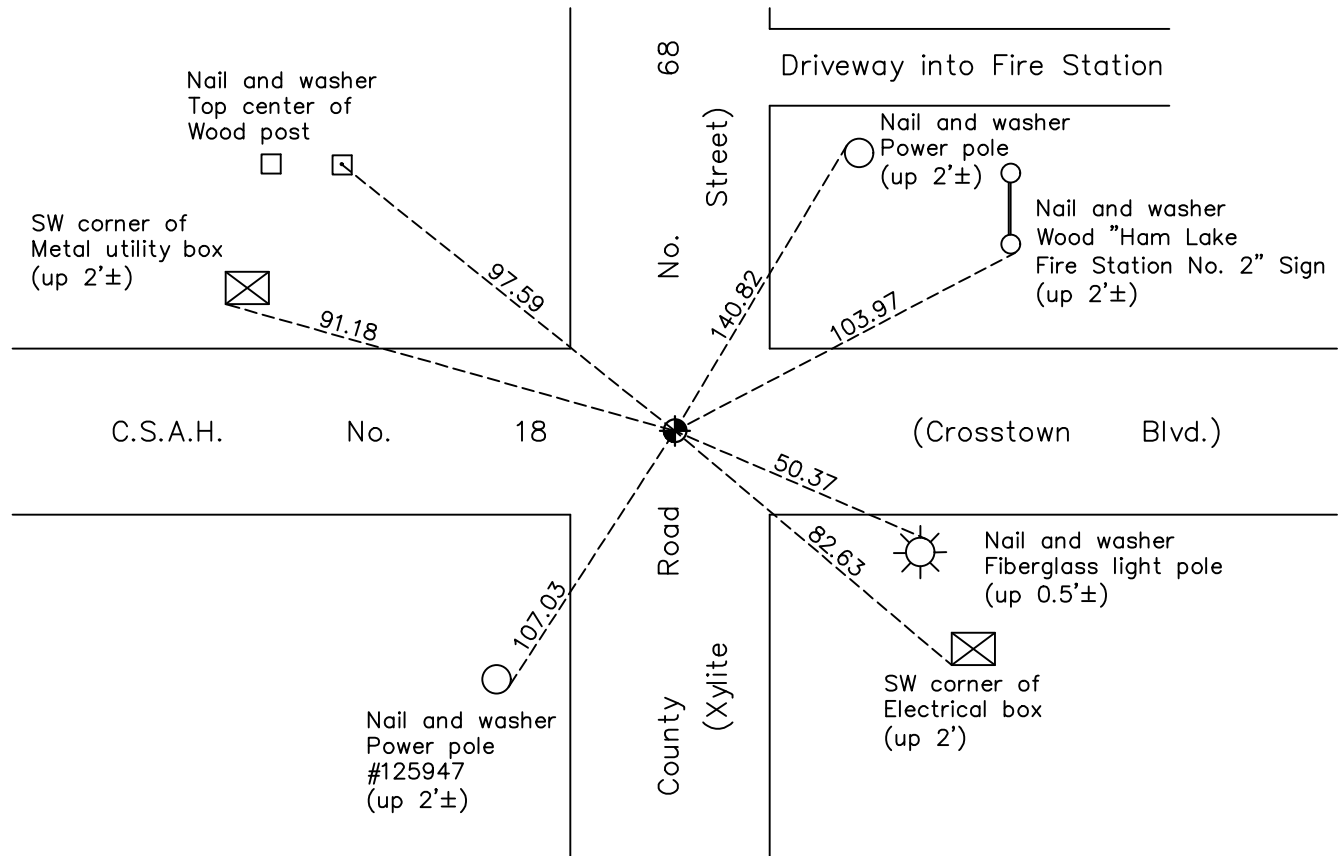
Southwest Corner of Sec. 3 Township 32 Range 23

On the 4th day of January, 1961, the described corner was evidenced by an iron pipe

and to perpetuate the location of said corner, at the exact location thereof, a permanent marker was placed consisting of a cast iron monument

AND on the 29th day of July, 2021, said permanent marker was reset with a cast iron monument after road construction using static GPS method and the ties were updated.

Updated reference ties are as shown below.



Revision Date
 8/02/2021

N.A.D. 1983 Coordinates
 (1996 Adjustment)

County Project Coordinates	
Northing	190739.6746
Easting	516056.0586
Date	1/24/02

I hereby certify that this United States public land survey monument record is correct and complete to the best of my knowledge and belief.
David Zieglmeier Date 5/31/22
 David Zieglmeier Anoka County Surveyor
 Minnesota License Number 46179

HISTORY OF GOVERNMENT CORNER

Page No. 28

County of Anoka

State of Minnesota

Southwest Corner of Sec. 3 Township 32 Range 23

CORNER HISTORY:

February 1855 - This corner was established by Hiram Taylor, Deputy Surveyor. Taylor marked the position by "Set post corner to sections 3, 4, 9 & 10" with two bearing trees marked as accessories.

January 4, 1961 - Set iron in blacktop road. Established ties to iron.

July 8, 1964 - Found iron in blacktop road and updated ties.

July 18, 1968 - Found iron in blacktop road and updated ties.

August 20, 1969 - Found iron and replaced with a cast iron monument flush. Updated ties.

June 2, 1971 - Found cast iron monument down 1/2". Raised flush and updated ties.

June 4, 1975 - Found cast iron monument and updated ties.

July 16, 1981 - Found cast iron monument and updated ties.

October 18, 1991 - Found cast iron monument and updated ties.

August 1, 1996 - Found cast iron monument and updated ties.

July 7, 1997 - Found cast iron monument and set construction ties prior to road construction.

September 19, 1997 - Set cast iron monument after road construction. Updated ties.

January 24, 2002 - Found cast iron monument and updated ties. Established NAD 1983 (1996 adj.) Anoka County project coordinates by static GPS methods.

April 8, 2011 - Found cast iron monument and updated ties.

March 9, 2017 - Found cast iron monument and updated ties.

April 12, 2021 - Found cast iron monument and updated ties. Verified position of corner by VRS GPS method.

April 2, 2021 - Cast iron monument removed for construction.

July 29, 2021 - Reset position of corner with a cast iron monument, set flush with surface after completion of road construction using static GPS methods. Ties were updated. Position verified by VRS GPS method.