

CERTIFICATE OF LOCATION OF GOVERNMENT CORNER

County of Anoka

State of Minnesota

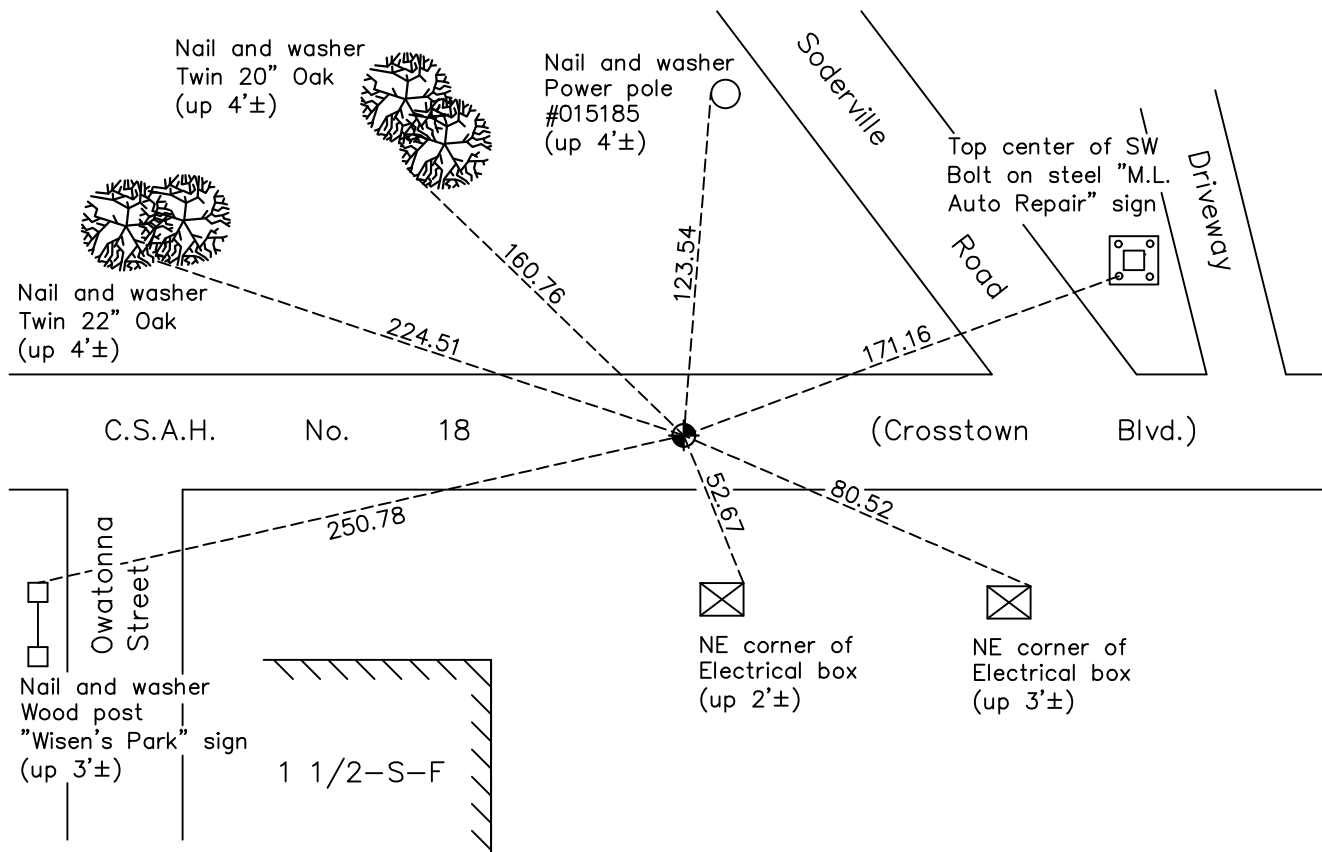
North 1/4 Corner of Sec. 9 Township 32 Range 23

On the 13th day of July, 1964, the described corner was evidenced by a cast iron monument set by N.C. Hoium

and to perpetuate the location of said corner, at the exact location thereof, a permanent marker was placed consisting of a cast iron monument

AND on the 27th day of July, 2021, said permanent marker was reset with a cast iron monuement after road construction using static GPS method and the ties were updated.

Updated reference ties are as shown below.



Revision Date
 8/02/2021

N.A.D. 1983 Coordinates
 (1996 Adjustment)

County Project Coordinates	
Northing	190795.7703
Easting	513447.2954
Date	9/19/97

I hereby certify that this United States public land survey monument record is correct and complete to the best of my knowledge and belief.

David Zieglmeier Date 5/31/22

David Zieglmeier Anoka County Surveyor
 Minnesota License Number 46179

HISTORY OF GOVERNMENT CORNER

Page No. 29

County of Anoka

State of Minnesota

North 1/4 Corner of Sec. 9 Township 32 Range 23

CORNER HISTORY:

February 1855 - This corner was established by Hiram Taylor, Deputy Surveyor. Taylor marked the position by "Set quarter section post" with one bearing tree marked as an accessory.

Unknown date - N.C. Hoium set a cast iron monument down 0.5'± and established ties to the monument.

July 13, 1964 - Found cast iron monument set by N.C. Hoium down 0.5'±. Updated ties.

July 19, 1966 - Found cast iron monument and updated ties.

June 2, 1971 - Found cast iron monument and updated ties.

June 4, 1975 - Found cast iron monument and updated ties.

July 16, 1981 - Found iron pipe in road and replaced with a cast iron monument. Updated ties.

June 25, 1984 - Found cast iron monument and updated ties.

December 28, 1994 - Found cast iron monument and updated ties.

August 1, 1996 - Found cast iron monument and updated ties.

July 7, 1997 - Found cast iron monument and set construction ties prior to road construction.

August 19, 1997 - Set cast iron monument after construction. Updated ties. Established NAD 1983 (1996 adj.) Anoka County project coordinates by static GPS methods.

April 8, 2011 - Found cast iron monument and updated ties.

March 9, 2017 - Found cast iron monument and updated ties.

February 23, 2021 - Found cast iron monument and updated ties. Verified position by VRS GPS methods.

April 26, 2021 - Cast iron monument removed for construction.

July 27, 2021 - Reset position of corner with a cast iron monument, set flush with surface after completion of road construction using static GPS methods. Ties were updated. Position verified by VRS GPS method.