

CERTIFICATE OF LOCATION OF GOVERNMENT CORNER

County of Anoka

State of Minnesota

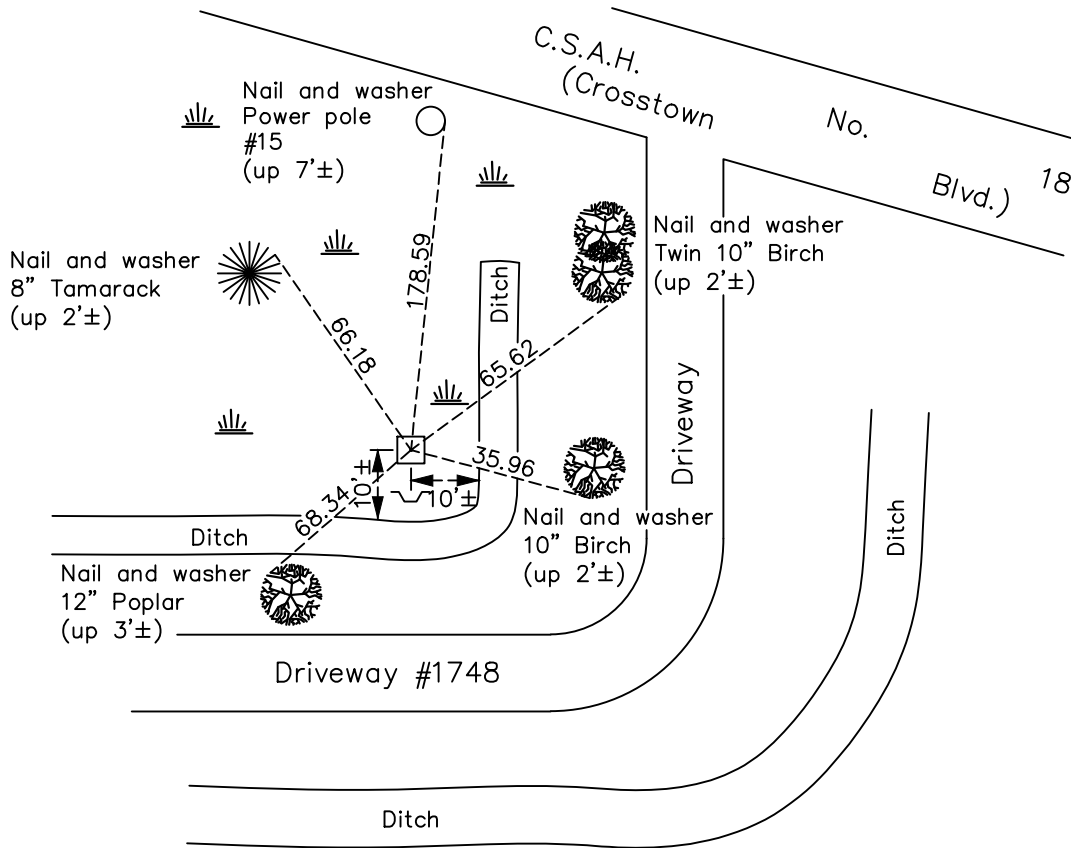
Southeast Corner of Sec. 5 Township 32 Range 23

On the 13th day of July, 1964, the described corner was evidenced by a concrete monument

and to perpetuate the location of said corner, at the exact location thereof, a permanent marker was placed consisting of the same concrete monument with a sign and post on the south side

AND on the 23rd day of February, 2021, said permanent marker was found and the ties were updated

Updated reference ties are as shown below.



Revision Date
7/6/2021

N.A.D. 1983 Coordinates
 (1996 Adjustment)

County Project Coordinates	
Northing	<u>190865.0521</u>
Easting	<u>510838.4339</u>
Date	<u>3/04/02</u>

I hereby certify that this United States public land survey monument record is correct and complete to the best of my knowledge and belief.

David Zieglmeier Date 5/31/22

David Zieglmeier Anoka County Surveyor
 Minnesota License Number 46179

HISTORY OF GOVERNMENT CORNER

Page No. 30

County of Anoka

State of Minnesota

Southeast Corner of Sec. 5 Township 32 Range 23

CORNER HISTORY:

February 1855 - This corner was established by Hiram Taylor, Deputy Surveyor. Taylor marked the position by "Set post corner to sections 4, 5, 8 & 9" with two bearing trees marked as accessories.

November 11, 1958 - Matt Berscheid found a sandstone monument flush with drill hole in top. Updated the ties.

July 2, 1959 - Found concrete monument flush in swamp with an iron pipe on the north side. Updated ties.

July 13, 1964 - Found concrete monument and updated ties.

July 19, 1966 - Found concrete monument and updated ties.

January 21, 1974 - Found concrete monument and updated ties.

February 1, 1978 - Found concrete monument flush and updated ties.

August 5, 1981 - Found concrete monument and updated ties.

June 25, 1984 - Found concrete monument and updated ties.

July 2, 1987 - Found concrete monument and updated ties.

August 21, 1996 - Found concrete monument and updated ties.

March 4, 2002 - Found concrete monument and updated ties. Established NAD 1983 (1996 adj.) Anoka County project coordinates by static GPS methods.

March 16, 2011 - Found concrete monument and updated ties.

March 9, 2017 - Found concrete monument and updated ties.

February 23, 2021 - Found concrete monument and updated ties.