

CERTIFICATE OF LOCATION OF GOVERNMENT CORNER

County of Anoka

State of Minnesota

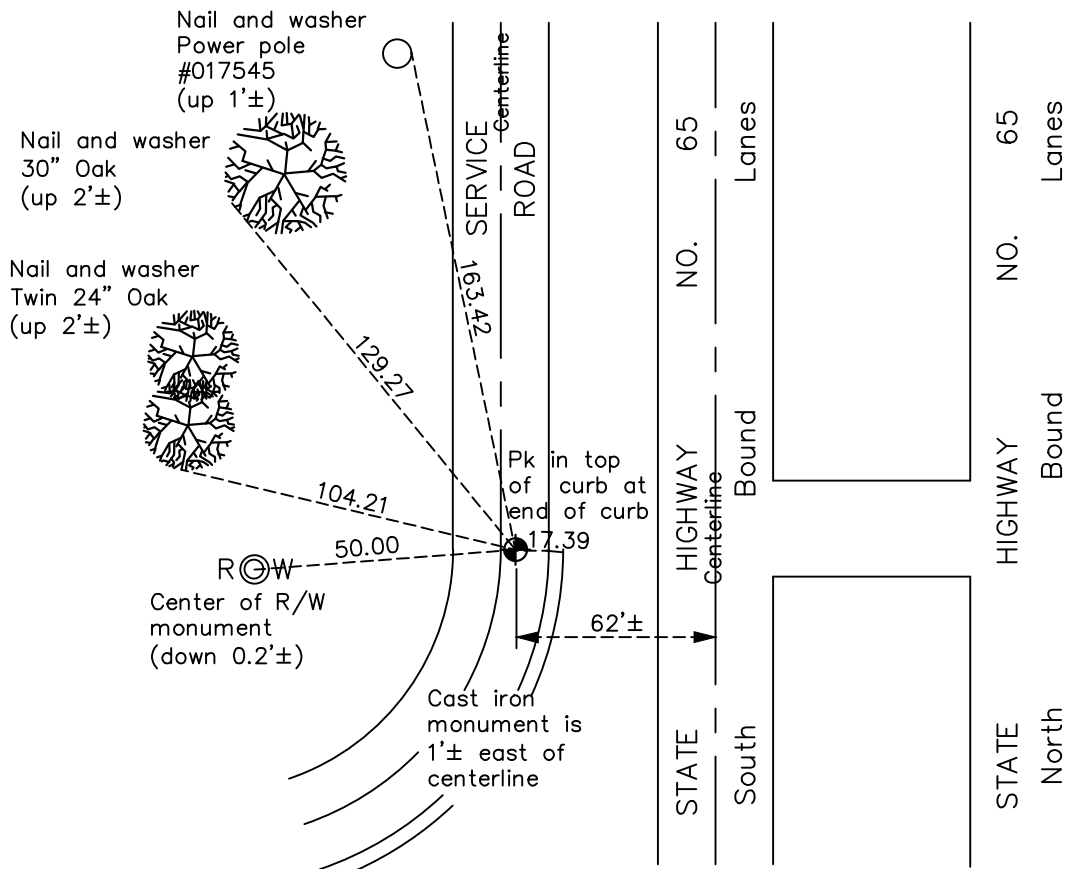
North 1/4 Corner of Sec. 8 Township 32 Range 23

On the 4th day of September, 1969, the described corner was evidenced by a granite monument

and to perpetuate the location of said corner, at the exact location thereof, a permanent marker was placed consisting of a cast iron monument on top of granite monument

AND on the 5th day of February, 2021, said permanent marker was found flush and the ties were updated

Updated reference ties are as shown below.



Revision Date
7/06/2021

N.A.D. 1983 Coordinates
(1996 Adjustment)

County Project Coordinates	
Northing	<u>190822.8065</u>
Easting	<u>508161.9022</u>
Date	<u>12/12/02</u>

I hereby certify that this United States public land survey monument record is correct and complete to the best of my knowledge and belief.

David Zieglmeier Date 5/31/22

David Zieglmeier Anoka County Surveyor
Minnesota License Number 46179

HISTORY OF GOVERNMENT CORNER

Page No. 31

County of Anoka

State of Minnesota

North 1/4 Corner of Sec. 8 Township 32 Range 23

CORNER HISTORY:

February 1855 - This corner was established by Hiram Taylor, Deputy Surveyor. Taylor marked the position by "Set quarter section post" with two bearing trees marked as accessories.

September 20, 1922 - Found a monument and updated ties.

October 10, 1941 - Harvey Cartwright found a 6" x 6" granite monument down 2'± in blacktop road. Updated ties.

March 15, 1957 - Found angle iron down 0.1'±.

January 9, 1961 - Found railroad spike down 0.2'± under blacktop road (granite below). Updated ties to spike.

April 16, 1963 - Found railroad spike down 0.2'± and set construction ties prior to road construction.

July 19, 1966 - Found railroad spike and updated construction ties prior to road construction,

September 4, 1969 - Set cast iron monument flush with road on top of granite monument down 1.7'±. Updated ties.

June 6, 1975 - Found cast iron monument and updated ties.

June 8, 1978 - Found cast iron monument and updated ties.

June 24, 1981 - Found cast iron monument and updated ties.

June 25, 1984 - Found cast iron monument and updated ties.

November 7, 1990 - Found cast iron monument and updated ties.

October 24, 1990 - Found cast iron monument and updated ties.

November 18, 1991 - Found cast iron monument and updated ties.

December 28, 1994 - Found cast iron monument and updated ties.

August 8, 1996 - Found cast iron monument and updated ties.

December 12, 2002 - Found cast iron monument and updated ties. Established NAD 1983 (1996 adj.) Anoka County project coordinates by static GPS methods.

December 15, 2005 - Set cast iron monument flush with road on top of granite monument. Updated ties.

February 17, 2017 - Found cast iron monument. Verified position by VRS GPS methods. Updated ties.

February 5, 2021 - Found cast iron monument. Verified position by VRS GPS methods. Updated ties.