

CERTIFICATE OF LOCATION OF GOVERNMENT CORNER

County of Anoka

State of Minnesota

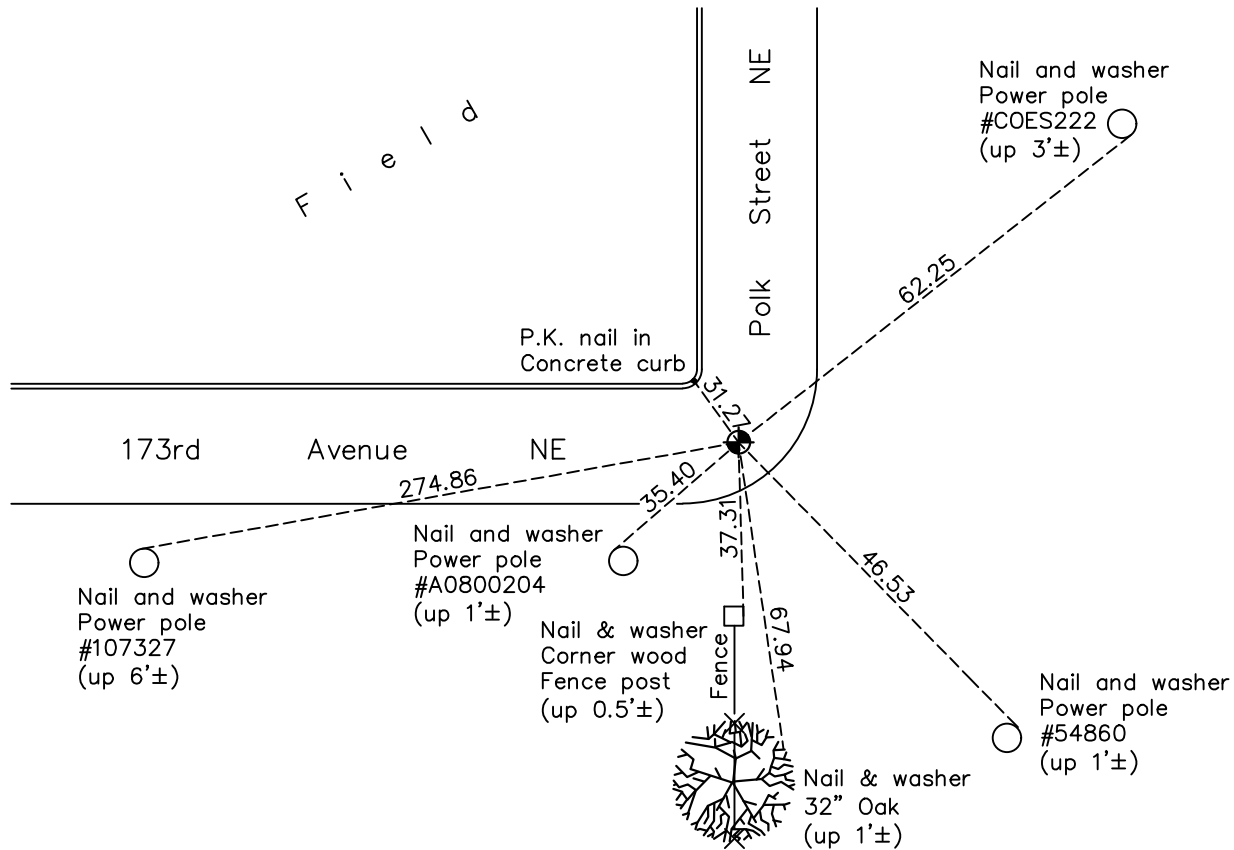
Southwest Corner of Sec. 5 Township 32 Range 23

On the 13th day of June, 1960, the described corner was evidenced by a granite monument

and to perpetuate the location of said corner, at the exact location thereof, a permanent marker was placed consisting of a cast iron monument

AND on the 17th day of March, 2021, said permanent marker was found and the ties were updated

Updated reference ties are as shown below.



Revision Date
7/06/2021

N.A.D. 1983 Coordinates
 (1996 Adjustment)

County Project Coordinates	
Northing	<u>190765.9291</u>
Easting	<u>505492.9572</u>
Date	<u>1/02/02</u>

I hereby certify that this United States public land survey monument record is correct and complete to the best of my knowledge and belief.

David Zieglmeier Date 5/31/22

David Zieglmeier Anoka County Surveyor
 Minnesota License Number 46179

HISTORY OF GOVERNMENT CORNER

Page No. 32

County of Anoka

State of Minnesota

Southwest Corner of Sec. 5 Township 32 Range 23

CORNER HISTORY:

February 1855 - This corner was established by Hiram Taylor, Deputy Surveyor. Taylor marked the position by "Set post corner to sections 5, 6, 7 & 8" with two bearing trees marked as accessories.

October 29, 1941 - Harvey Cartwright found a granite monument and updated the ties.

April 1951 - Egan, Field & Novak found a granite monument and updated the ties.

June 13, 1960 - Found granite monument up 0.1'± and updated ties.

April 16, 1962 - Lowered granite monument to 0.6'± below the surface.

July 16, 1964 - Found granite monument and updated ties.

July 19, 1966 - Found granite monument down 0.6'± and updated ties.

May 17, 1971 - Found granite monument down 0.5'± and updated ties.

June 6, 1975 - Found granite monument and updated ties.

June 8, 1978 - Found granite monument and updated ties.

June 24, 1981 - Found granite monument and updated ties.

June 25, 1984 - Found granite monument and updated ties.

October 18, 1991 - Found granite monument and updated ties.

August 8, 1996 - Found granite monument and updated ties.

July 11, 2000 - Found granite monument and set construction ties prior to construction. Removed monument.

August 30, 2000 - Set cast iron monument after construction using construction ties. Updated ties.

January 2, 2002 - Found cast iron monument and updated ties. Established NAD 1983 (1996 adj.) Anoka County project coordinates by static GPS methods.

March 10, 2011 - Found cast iron monument and updated ties.

February 17, 2017 - Found cast iron monument. Verified position by VRS GPS methods. Updated ties.

March 17, 2021 - Found cast iron monument. Verified position by VRS GPS methods. Updated ties.