

CERTIFICATE OF LOCATION OF GOVERNMENT CORNER

County of Anoka

State of Minnesota

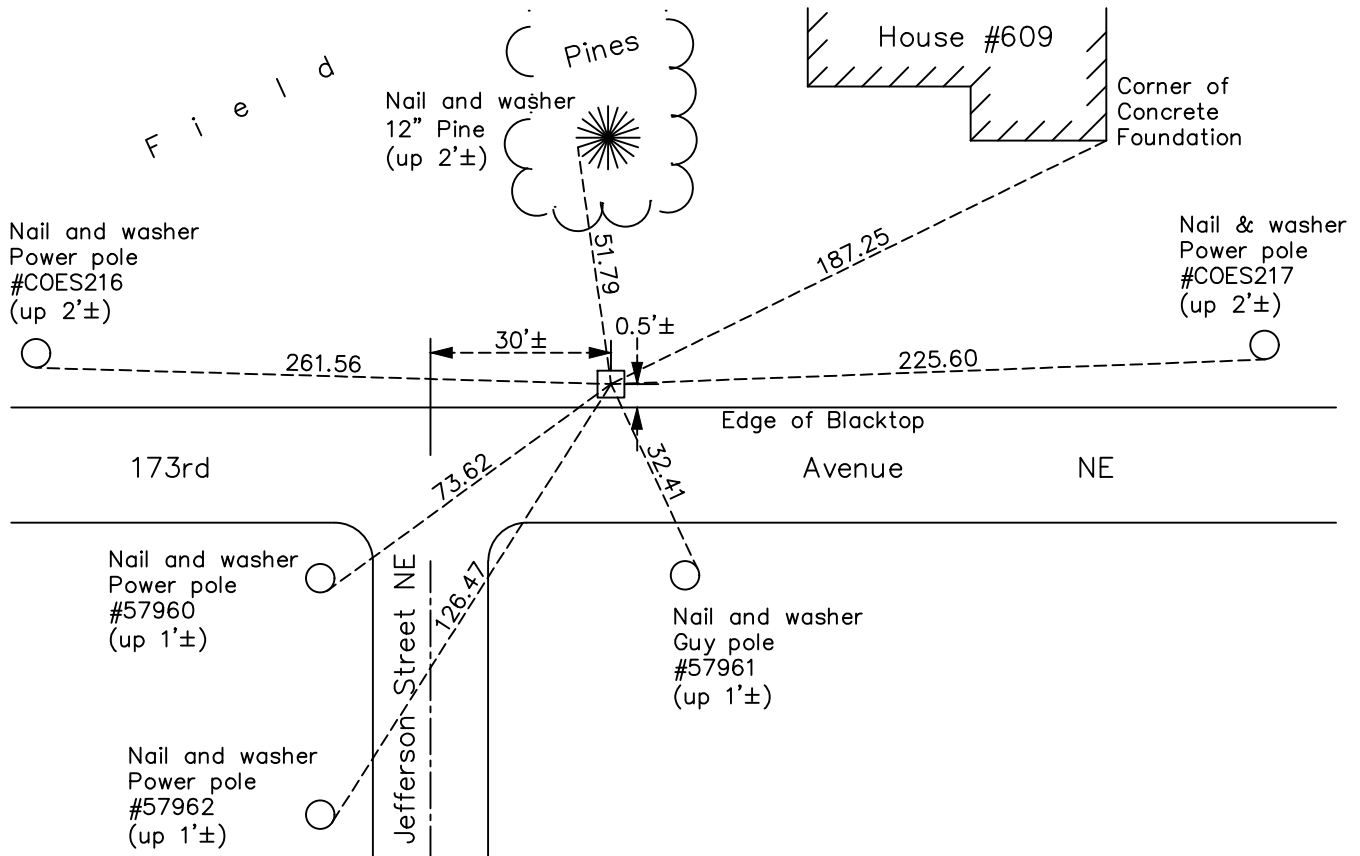
North 1/4 Corner of Sec. 7 Township 32 Range 23

On the 24th day of October, 1962, the described corner was evidenced by a granite monument

and to perpetuate the location of said corner, at the exact location thereof, a permanent marker was placed consisting of the same granite monument

AND on the 17th day of March, 2021, said permanent marker was found down 1.7'± and the ties were updated

Updated reference ties are as shown below.



Revision Date
 7/06/2021

N.A.D. 1983 Coordinates
 (1996 Adjustment)

County Project Coordinates	
Northing	190661.3798
Easting	502820.6504
Date	1/02/02

I hereby certify that this United States public land survey monument record is correct and complete to the best of my knowledge and belief.
David Zieglmeier Date 5/31/22
 David Zieglmeier Anoka County Surveyor
 Minnesota License Number 46179

HISTORY OF GOVERNMENT CORNER

Page No. 33

County of Anoka

State of Minnesota

North 1/4 Corner of Sec. 7 Township 32 Range 23

CORNER HISTORY:

February 1855 - This corner was established by Hiram Taylor, Deputy Surveyor. Taylor marked the position by "Set quarter section post" with two bearing trees marked as accessories.

October 24, 1962 - Found 6" x 6" granite monument standing up on north edge of dirt road as uncovered by grader (grader operator stated he did not move the granite when he hit it). Updated ties to granite.

July 16, 1964 - Found granite monument down 1.2'± with an iron pipe on the north face. Updated ties.

July 19, 1966 - Found granite monument and updated ties.

May 17, 1971 - Found granite monument and updated ties.

June 5, 1975 - Found granite monument and updated ties.

June 8, 1978 - Found granite monument and updated ties.

June 24, 1981 - Found granite monument and updated ties.

June 25, 1984 - Found granite monument and updated ties.

October 18, 1991 - Found granite monument and updated ties.

August 8, 1996 - Found granite monument and updated ties.

January 2, 2002 - Found granite monument and updated ties. Established NAD 1983 (1996 adj.) Anoka County project coordinates by static GPS methods.

April 19, 2011 - Found granite monument down 2'± and 0.5'± north of blacktop road edge. Updated ties.

March 21, 2017 - Found granite monument down 1.7'± and updated ties.

March 17, 2021 - Found granite monument down 1.7'± and updated ties. Verified position by VRS GPS method.