

CERTIFICATE OF LOCATION OF GOVERNMENT CORNER

County of Anoka

State of Minnesota

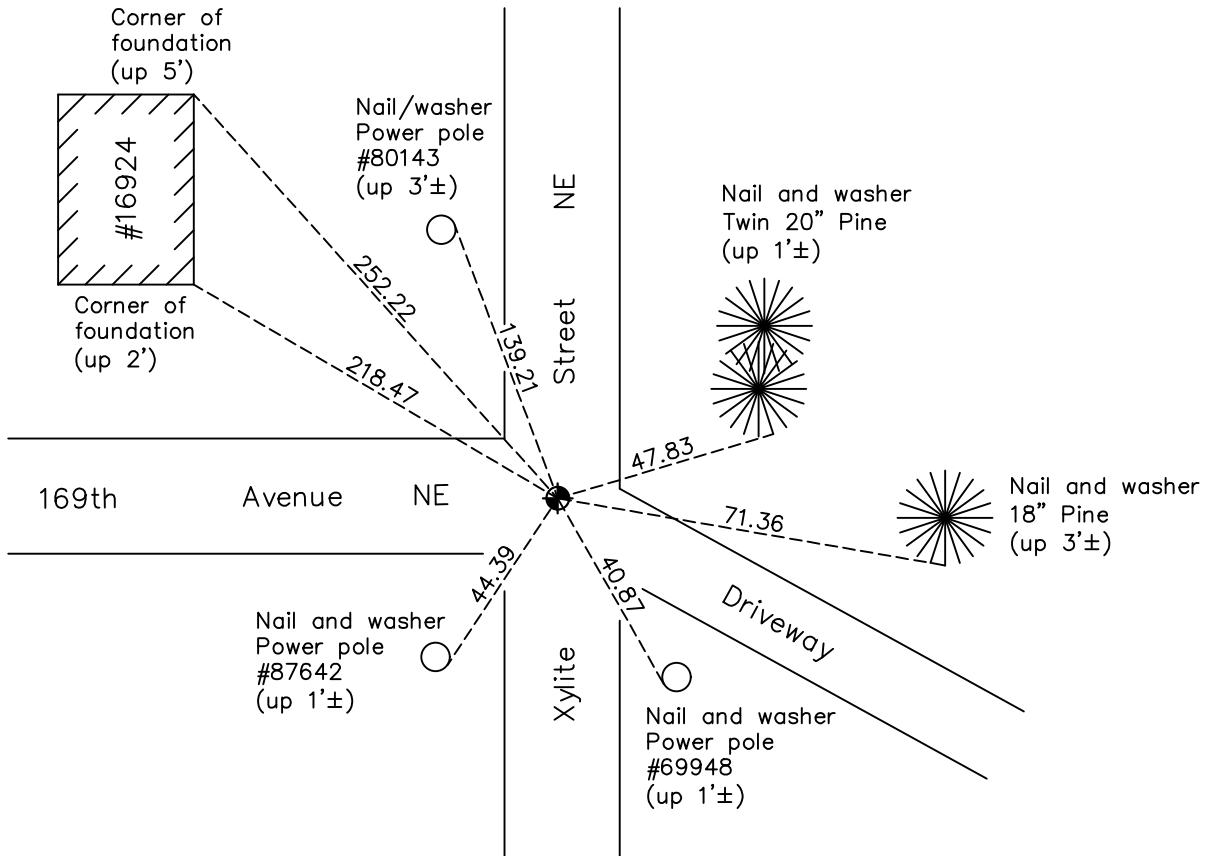
West 1/4 Corner of Sec. 10 Township 32 Range 23

On the 20th day of March, 1961, the described corner was evidenced by area resurvey

and to perpetuate the location of said corner, at the exact location thereof, a permanent marker was placed consisting of a cast iron monument

AND on the 5th day of February, 2021, said permanent marker was found flush with surface and the ties were updated.

Updated reference ties are as shown below.



Revision Date

7/09/2021

N.A.D. 1983 Coordinates
(1996 Adjustment)

County Project Coordinates	
Northing	<u>188097.2767</u>
Easting	<u>516065.1088</u>
Date	<u>1/03/02</u>

I hereby certify that this United States public land survey monument record is correct and complete to the best of my knowledge and belief.

David Zieglmeier Date 5/31/22

David Zieglmeier Anoka County Surveyor
Minnesota License Number 46179

HISTORY OF GOVERNMENT CORNER

Page No. 37

County of Anoka

State of Minnesota

West 1/4 Corner of Sec. 10 Township 32 Range 23

CORNER HISTORY:

February 1855 - This corner was established by Hiram Taylor, Deputy Surveyor. Taylor marked the position by "Set quarter section post" with one bearing tree marked as an accessory.

March 20, 1961 - Set cast iron monument down 0.6'± using old survey notes (no evidence of original corner). Established ties to monument.

July 8, 1964 - Found cast iron monument and updated ties.

July 20, 1966 - Found cast iron monument and updated ties.

June 2, 1971 - Found cast iron monument broken and replaced with a new cast iron monument down 0.8'± using corner ties. Updated ties to new monument.

June 6, 1975 - Found cast iron monument and updated ties.

June 9, 1978 - Found cast iron monument and updated ties.

November 19, 1980 - Set cast iron monument flush. Updated ties.

June 25, 1981 - Found cast iron monument and updated ties.

July 12, 1984 - Found cast iron monument and updated ties.

October 19, 1991 - Found cast iron monument and updated ties.

August 1, 1996 - Found cast iron monument and updated ties.

January 3, 2002 - Found cast iron monument and updated ties. Established NAD 1983 (1996 adj.) Anoka County project coordinates by static GPS methods.

February 25, 2011 - Found cast iron monument and updated ties.

August 26, 2016 - Found cast iron monument. Updated corner ties and verified position by VRS GPS methods prior to road construction. Removed monument.

June 30, 2017 - Set cast iron monument flush after road construction using static GPS methods. Verified position by VRS GPS methods. Updated ties.

February 5, 2021 - Found cast iron monument flush and updated ties. Verified position by VRS GPS method.