

CERTIFICATE OF LOCATION OF GOVERNMENT CORNER

County of Anoka

State of Minnesota

Witness Corner of Sec. 10 Township 32 Range 23

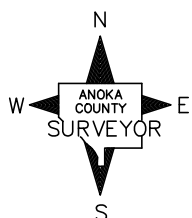
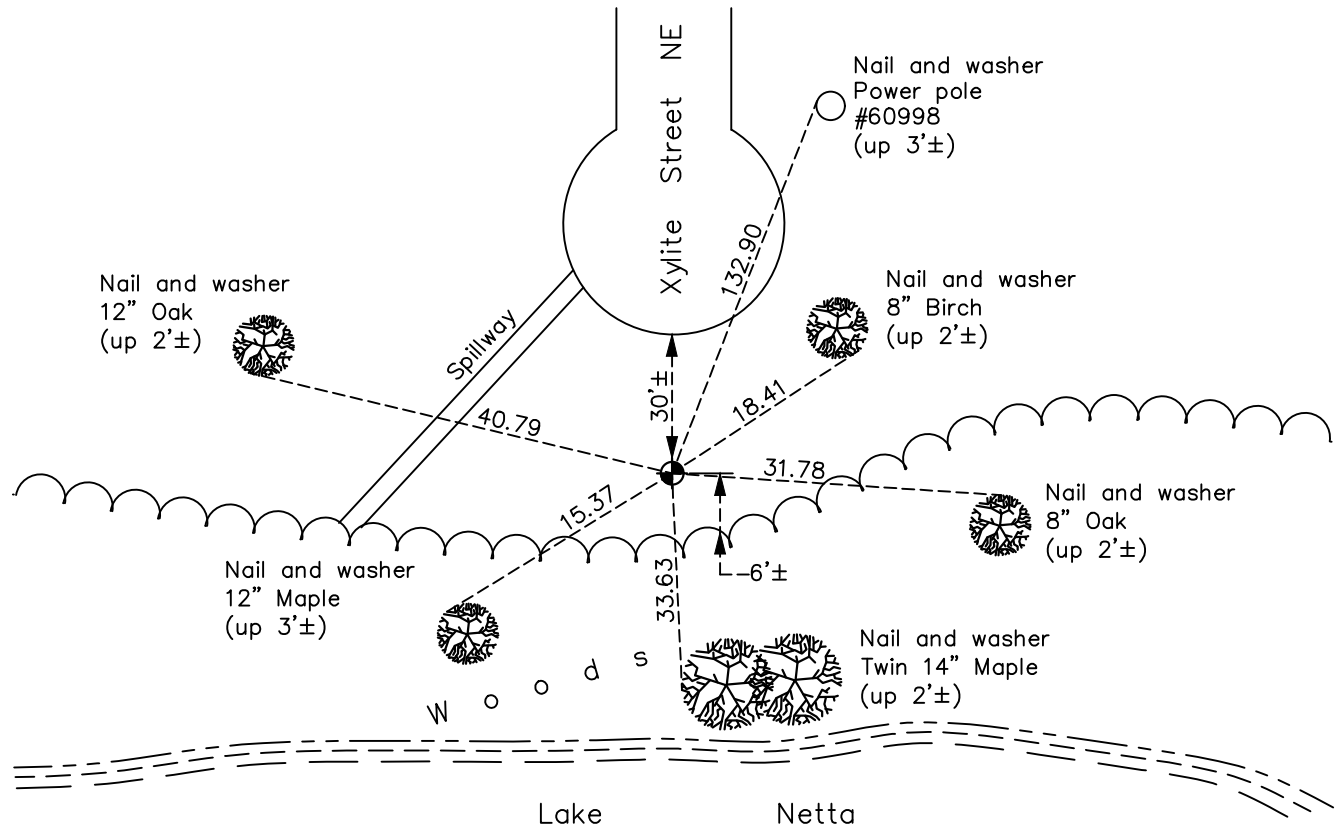
(on west line of SW1/4)

On the 23rd day of March, 1961, the described corner was evidenced by area resurvey

and to perpetuate the location of said corner, at the exact location thereof, a permanent marker was placed consisting of a cast iron monument

AND on the 15th day of January, 2021, said permanent marker was found down 0.3'± and the ties were updated

Updated reference ties are as shown below.



Revision Date
7/09/2021

N.A.D. 1983 Coordinates
(1996 Adjustment)

County Project Coordinates	
Northing	186452.6782
Easting	516092.4116
Date	1/16/02

I hereby certify that this United States public land survey monument record is correct and complete to the best of my knowledge and belief.

David Zieglmeier Date 5/31/22

David Zieglmeier Anoka County Surveyor
Minnesota License Number 46179

HISTORY OF GOVERNMENT CORNER

Page No. 38

County of Anoka

State of Minnesota

Witness Corner of Sec. 10 Township 32 Range 23
(on west line of SW1/4)

CORNER HISTORY:

March 23, 1961 - Found cast iron monument up 0.05'± and updated ties.

June 4, 1971 - Found cast iron monument and updated ties.

June 10, 1975 - Found cast iron monument broken off and replaced with a new cast iron monument down 0.2'±. Updated ties.

June 9, 1978 - Found cast iron monument and updated ties.

December 8, 1981 - Found cast iron monument flush and updated ties.

July 12, 1984 - Found cast iron monument and updated ties.

November 19, 1991 - Found cast iron monument and updated ties.

August 1, 1996 - Found cast iron monument and updated ties.

January 16, 2002 - Established NAD 1983 (1996 adj.) Anoka County project coordinates by static GPS methods.

April 5, 2011 - Found cast iron monument down 0.3'± and updated ties.

March 10, 2017 - Found cast iron monument. Verified position by VRS GPS methods. Updated ties.

January 15, 2021 - Found cast iron monument. Verified position by VRS GPS methods. Updated ties.