

# CERTIFICATE OF LOCATION OF GOVERNMENT CORNER

County of Anoka

State of Minnesota

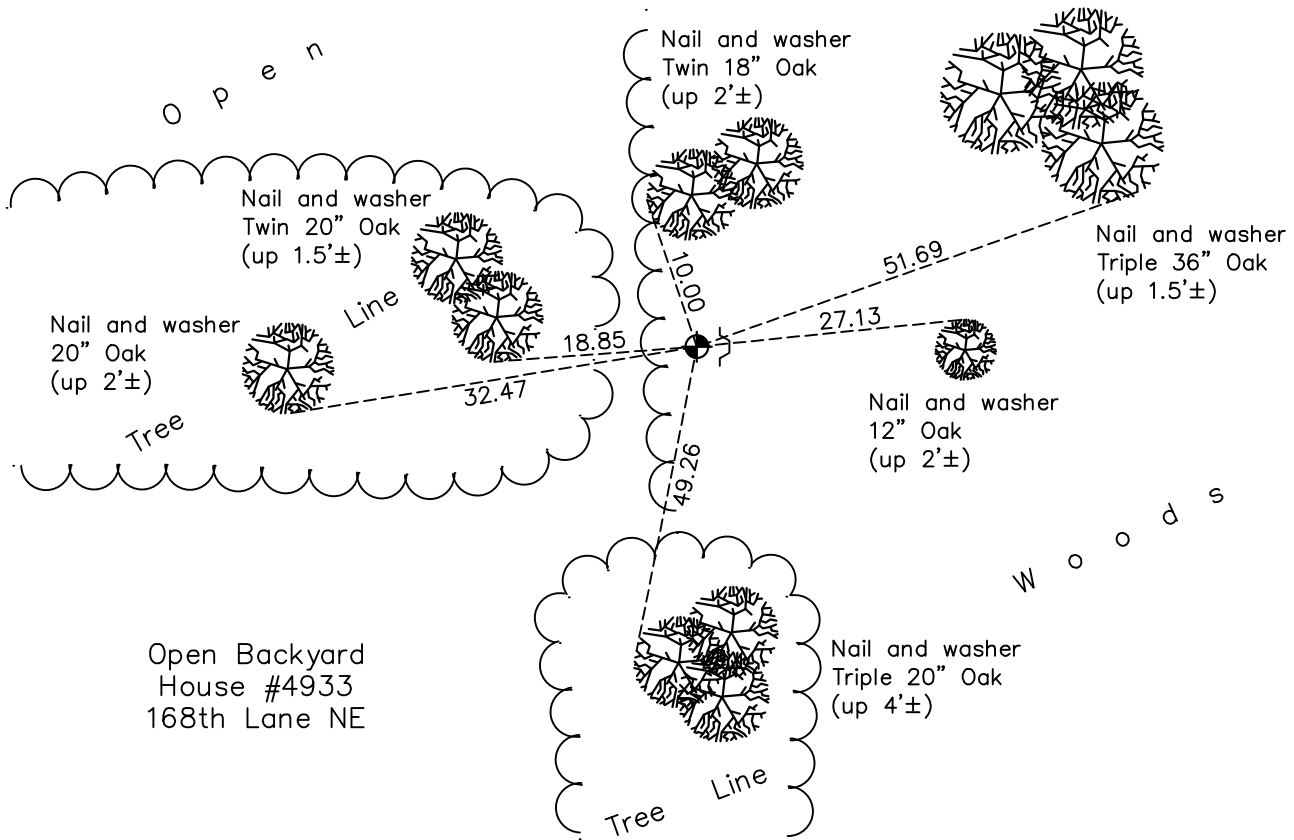
## East 1/4 Corner of Sec. 12 Township 32 Range 23

On the 30th day of April, 1965, the described corner was evidenced by a concrete monument

and to perpetuate the location of said corner, at the exact location thereof, a permanent marker was placed consisting of a cast iron monument

AND on the 12th day of April, 2021, said permanent marker was found down 0.3'± and the ties were updated.

Updated reference ties are as shown below.



Revision Date  
7/09/2021

N.A.D. 1983 Coordinates  
(1996 Adjustment)

County Project Coordinates	
Northing	<u>187769.1920</u>
Easting	<u>532043.0894</u>
Date	<u>1/28/02</u>

I hereby certify that this United States public land survey monument record is correct and complete to the best of my knowledge and belief.

*David Zieglmeier* Date 5/31/22

David Zieglmeier Anoka County Surveyor  
Minnesota License Number 46179

# HISTORY OF GOVERNMENT CORNER

Page No. 43

County of Anoka

State of Minnesota

## East 1/4 Corner of Sec. 12 Township 32 Range 23

### **CORNER HISTORY:**

August 1847 - This corner was established by James M. Marsh, Deputy Surveyor. Marsh marked the position by "Set post at quarter section corner" with one bearing tree marked as an accessory.

April 30, 1965 - Found 4" x 4" concrete monument broken off and down 0.7'±. Updated ties. Set iron pipe on the north side of concrete monument.

August 3, 1966 - Found broken concrete monument and updated ties.

June 21, 1971 - Found broken concrete monument and replaced with a cast iron monument up 0.1'±. Updated ties.

June 10, 1975 - Found cast iron monument and updated ties.

June 9, 1978 - Found cast iron monument and updated ties.

July 16, 1984 - Found cast iron monument and updated ties.

December 31, 1990 - Found cast iron monument and updated ties.

November 20, 1991 - Found cast iron monument and updated ties.

August 20, 1996 - Found cast iron monument and updated ties.

January 28, 2002 - Established NAD 1983 (1996 adj.) Anoka County project coordinates by static GPS methods.

March 18, 2011 - Found cast iron monument up 0.3'± and updated ties.

February 15, 2017 - Found cast iron monument down 0.3'± with a sign and post on the east side. Updated ties.

April 12, 2021 - Found cast iron monument down 0.3'± with a sign and post on the east side. Updated ties. Verified position of corner by VRS GPS method.