

CERTIFICATE OF LOCATION OF GOVERNMENT CORNER

County of Anoka

State of Minnesota

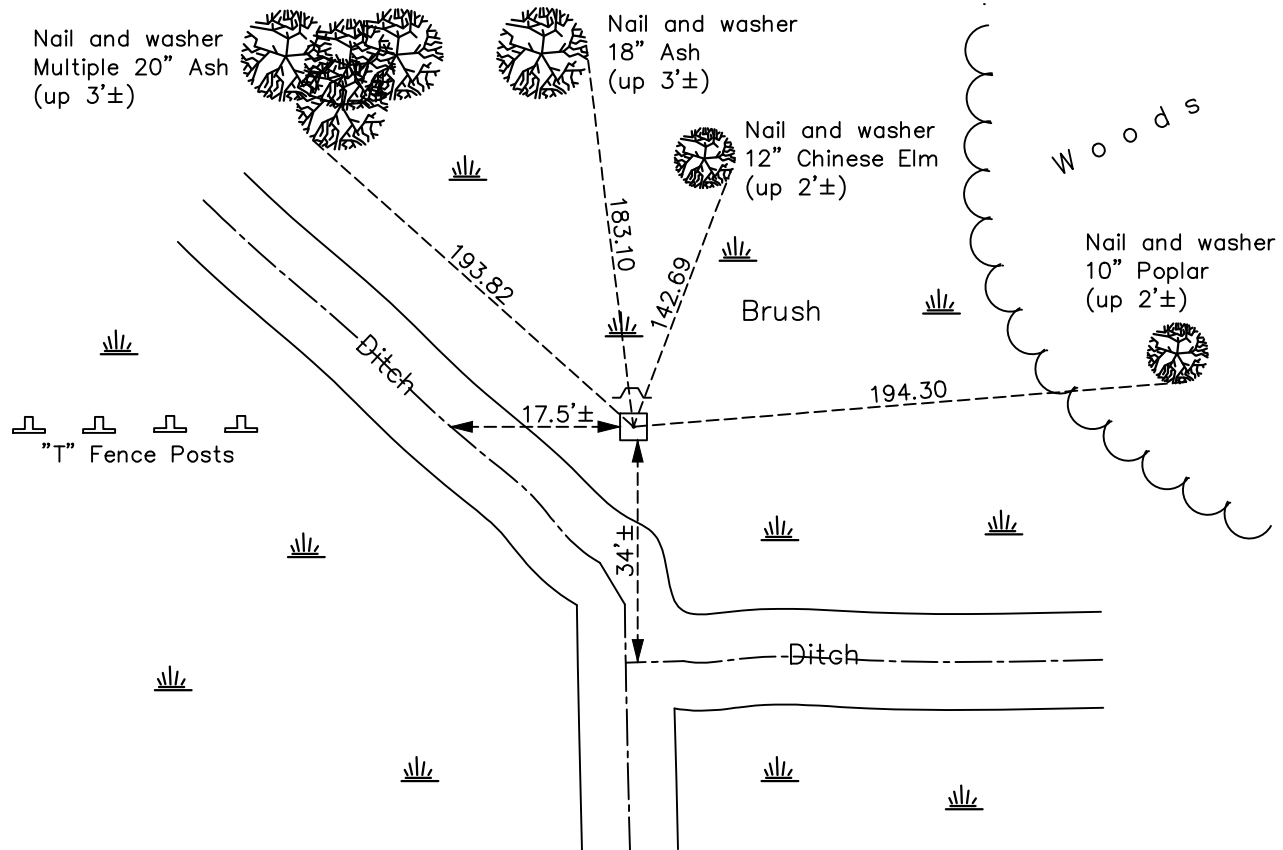
Southeast Corner of Sec. 12 Township 32 Range 23

On the 8th day of March, 1965, the described corner was evidenced by a concrete monument

and to perpetuate the location of said corner, at the exact location thereof, a permanent marker was placed consisting of the same concrete monument

AND on the 19th day of April, 2021, said permanent marker was found up 1.0'± leaning southwesterly and the ties were updated.

Updated reference ties are as shown below.



N.A.D. 1983 Coordinates
(1996 Adjustment)

| County Project Coordinates | |
|----------------------------|--------------------|
| Northing | <u>185147.3964</u> |
| Easting | <u>532038.9539</u> |
| Date | <u>1/16/02</u> |

Revision Date
7/09/2021

I hereby certify that this United States public land survey monument record is correct and complete to the best of my knowledge and belief.
David Zieglmeier Date 5/31/22
 David Zieglmeier Anoka County Surveyor
 Minnesota License Number 46179

HISTORY OF GOVERNMENT CORNER

Page No. 44

County of Anoka

State of Minnesota

Southeast Corner of Sec. 12 Township 32 Range 23

CORNER HISTORY:

August 1847 - This corner was established by James M. Marsh, Deputy Surveyor. Marsh marked the position by "Set post at corner to sections 7, 12, 13 & 18" with two bearing trees marked as accessories.

February 7, 1956 - Anoka County highway department found a concrete monument up 1.2'±, East of Coon Creek 9'± and in line with the center line of road to the West. No corner ties available.

March 8, 1965 - Found 5" square concrete monument with an "X" on top, leaning in the swamp. Reset monument to plumb. No corner ties available.

August 3, 1966 - Found concrete monument. No corner ties available.

June 21, 1971 - Found concrete monument. No corner ties available.

July 9, 1981 - Found concrete monument. No corner ties available.

July 16, 1984 - Found concrete monument. No corner ties available.

May 20, 1988 - Found concrete monument. No corner ties available.

August 29, 1996 - Found concrete monument. No corner ties available.

January 16, 2002 - Established NAD 1983 (1996 adj.) Anoka County project coordinates by static GPS methods.

April 2011 - Found concrete monument up 0.5'± and established ties to monument.

February 15, 2017 - Found concrete monument up 0.5'± and updated ties.

April 19, 2021 - Found concrete monument up 1.0'± leaning SW'ly and updated ties.