

CERTIFICATE OF LOCATION OF GOVERNMENT CORNER

County of Anoka

State of Minnesota

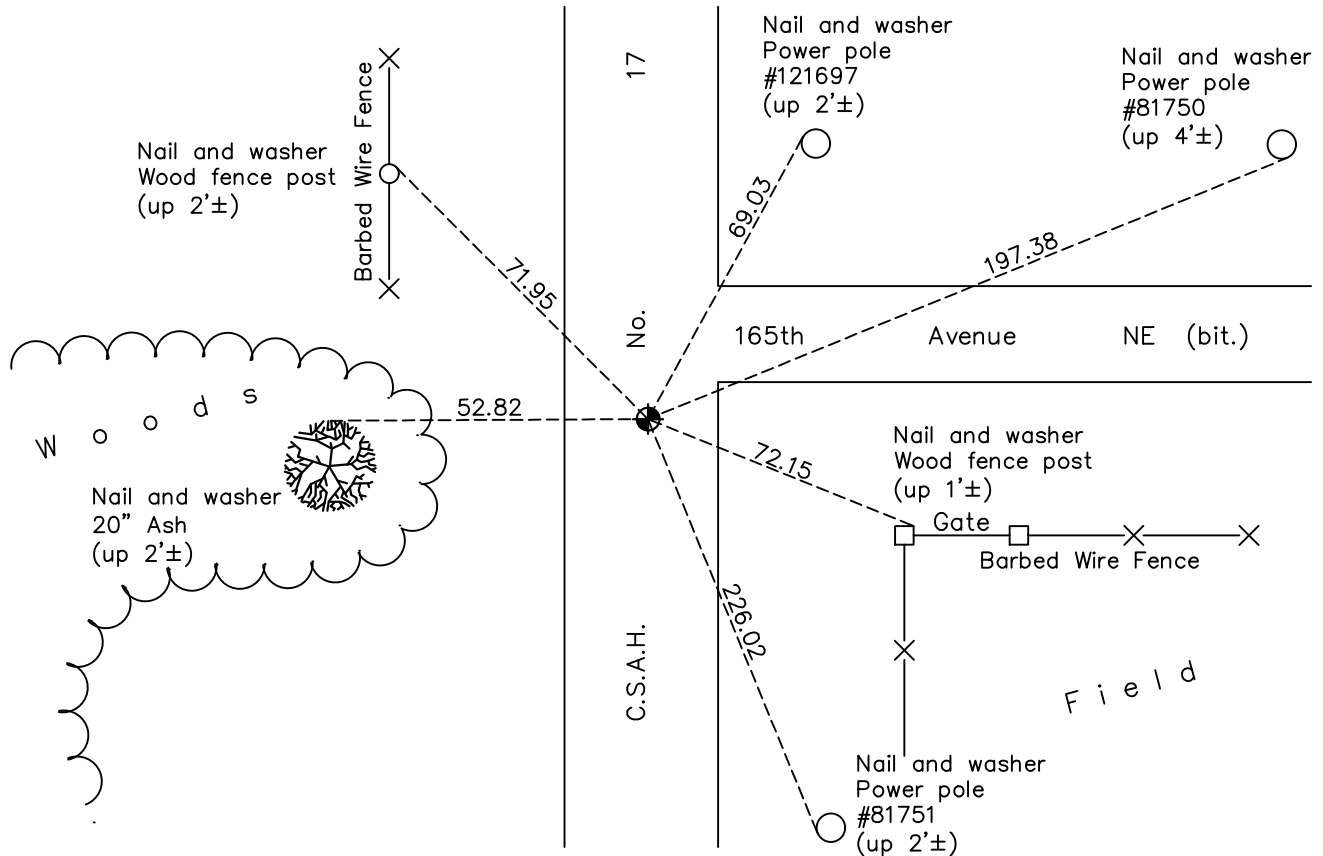
North 1/4 Corner of Sec. 13 Township 32 Range 23

On the 30th day of August, 1967, the described corner was evidenced by a P.K. nail

and to perpetuate the location of said corner, at the exact location thereof, a permanent marker was placed consisting of a cast iron monument

AND on the 12th day of April, 2021, said permanent marker was found flush on center line and the ties were updated

Updated reference ties are as shown below.



N.A.D. 1983 Coordinates
(1996 Adjustment)

County Project Coordinates

Northing 185260.0673

Easting 529445.9695

Date 1/16/02

Revision Date

7/14/2021

I hereby certify that this United States public land survey monument record is correct and complete to the best of my knowledge and belief.

David Zieglmeier Date 5/31/22

David Zieglmeier Anoka County Surveyor
Minnesota License Number 46179

HISTORY OF GOVERNMENT CORNER

Page No. 45

County of Anoka

State of Minnesota

North 1/4 Corner of Sec. 13 Township 32 Range 23

CORNER HISTORY:

February 1855 - This corner was established by Hiram Taylor, Deputy Surveyor. Taylor marked the position by "Set quarter section post" with two bearing trees marked as accessories.

December 1, 1965 - Found P.K. spike set by Don Hult after area resurvey. Held to spike position. Updated ties.

July 21, 1966 - Found P.K. spike and updated ties.

August 30, 1967 - Found P.K. spike and replaced with a cast iron monument flush. Updated ties.

May 25, 1971 - Found cast iron monument and updated ties.

June 16, 1972 - Found cast iron monument down and raised flush.

June 9, 1975 - Found cast iron monument and updated ties.

June 9, 1978 - Found cast iron monument and updated ties.

June 26, 1984 - Found cast iron monument and updated ties.

November 20, 1990 - Found cast iron monument and updated ties.

December 31, 1990 - Found cast iron monument and updated ties.

January 16, 2002 - Established NAD 1983 (1996 adj.) Anoka County project coordinates by static GPS methods.

April 30, 2010 - Found cast iron monument and updated ties prior to road overlay. Loosened monument top.

July 16, 2010 - Found cast iron monument down 0.5'± and raised flush after road overlay. Updated ties.

April 19, 2011 - Found cast iron monument and updated ties.

March 10, 2017 - Found cast iron monument. Verified position by VRS GPS methods. Updated ties.

April 12, 2021 - Found cast iron monument. Verified position by VRS GPS methods. Updated ties.