

# CERTIFICATE OF LOCATION OF GOVERNMENT CORNER

County of Anoka

State of Minnesota

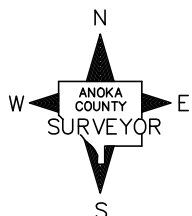
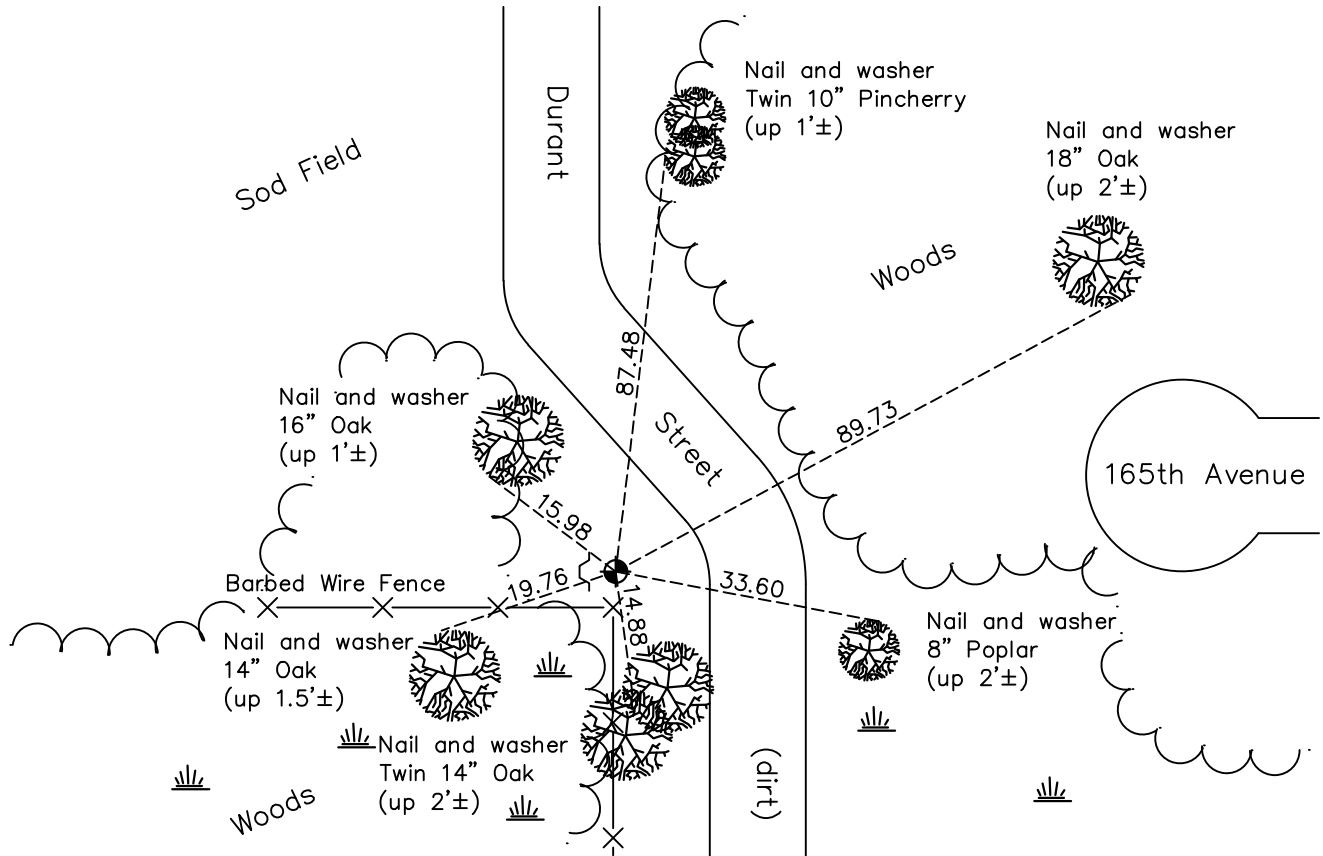
## Northwest Corner of Sec. 13 Township 32 Range 23

On the 1st day of December, 1965, the described corner was evidenced by area resurvey

and to perpetuate the location of said corner, at the exact location thereof, a permanent marker was placed consisting of a cast iron monument with a sign and post on the west side

AND on the 15th day of March, 2021, said permanent marker was found down 0.4'± and the ties were updated.

Updated reference ties are as shown below.



Revision Date  
7/14/2021

N.A.D. 1983 Coordinates  
(1996 Adjustment)

County Project Coordinates	
Northing	<u>185394.7538</u>
Easting	<u>526824.4911</u>
Date	<u>1/16/02</u>

I hereby certify that this United States public land survey monument record is correct and complete to the best of my knowledge and belief.

*David Zieglmeier* Date 5/31/22

David Zieglmeier Anoka County Surveyor  
 Minnesota License Number 46179

# HISTORY OF GOVERNMENT CORNER

Page No. 46

County of Anoka

State of Minnesota

## Northwest Corner of Sec. 13 Township 32 Range 23

### **CORNER HISTORY:**

February 1855 - This corner was established by Hiram Taylor, Deputy Surveyor. Taylor marked the position by "Set post corner to sections 11, 12, 13 & 14" with two bearing trees marked as accessories.

December 1, 1965 - Set cast iron monument flush using area resurvey. Established ties to monument.

July 22, 1966 - Found cast iron monument and updated ties.

June 16, 1971 - Found cast iron monument up 0.1'± and updated ties.

June 9, 1975 - Found cast iron monument and updated ties.

July 21, 1977 - Found cast iron monument flush and updated ties.

June 9, 1978 - Found cast iron monument and updated ties.

June 24, 1981 - Found cast iron monument and updated ties.

June 26, 1984 - Found cast iron monument and updated ties.

April 16, 1986 - Found cast iron monument and updated ties.

December 31, 1990 - Found cast iron monument and updated ties.

November 20, 1991 - Found cast iron monument and updated ties.

August 15, 1996 - Found cast iron monument and updated ties.

March 28, 2011 - Found cast iron monument down 1'± with top broken off. Checked corner ties to center of fin.

April 4, 2011 - Found broken cast iron monument and replaced with a new cast iron monument down 0.4'± using static GPS methods. Set sign and post on the west side. Updated ties.

February 17, 2017 - Found cast iron monument down 0.4'± and updated ties.

March 15, 2021 - Found cast iron monument down 0.4'± and updated ties.