

CERTIFICATE OF LOCATION OF GOVERNMENT CORNER

County of Anoka

State of Minnesota

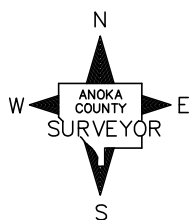
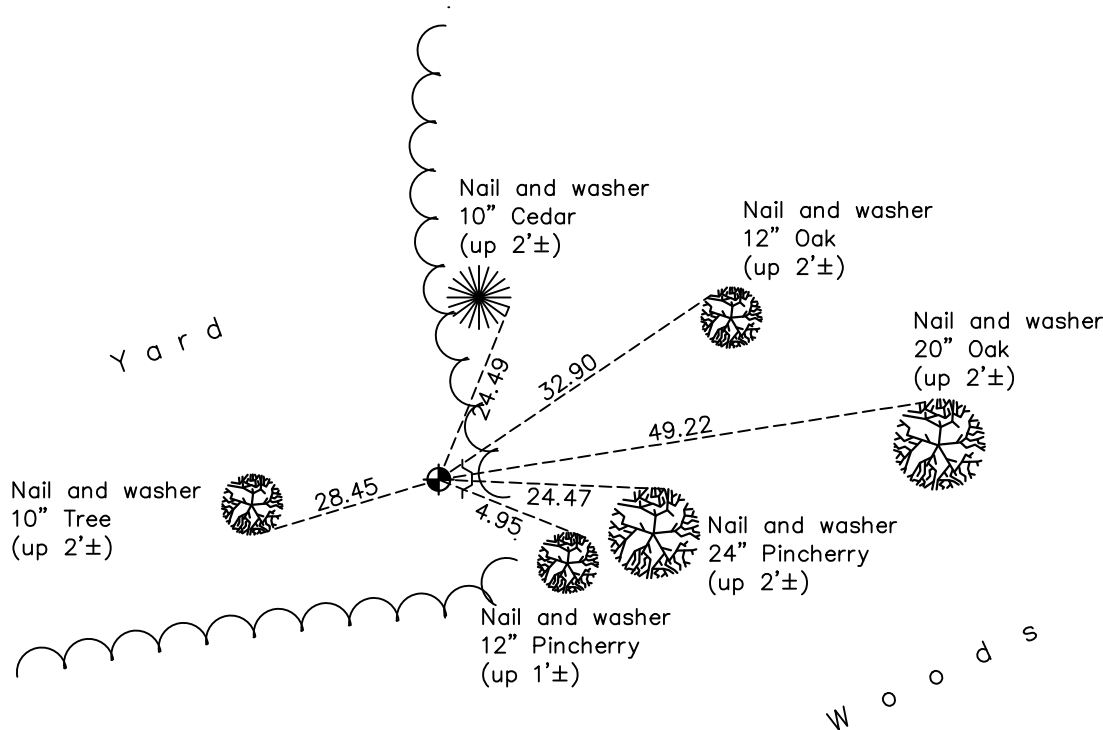
South 1/4 Corner of Sec. 11 Township 32 Range 23

On the 15th day of July, 1966, the described corner was evidenced by area resurvey

and to perpetuate the location of said corner, at the exact location thereof, a permanent marker was placed consisting of a cast iron monument w/ a sign and post on the East side

AND on the 15th day of March, 2021, said permanent marker was found down 0.5'± and the ties were updated.

Updated reference ties are as shown below.



Revision Date
7/14/2021

N.A.D. 1983 Coordinates
(1996 Adjustment)

County Project Coordinates	
Northing	185355.7410
Easting	524150.8121
Date	9/05/01

I hereby certify that this United States public land survey monument record is correct and complete to the best of my knowledge and belief.
David Zieglmeier Date 5/31/22
 David Zieglmeier Anoka County Surveyor
 Minnesota License Number 46179

HISTORY OF GOVERNMENT CORNER

Page No. 47

County of Anoka

State of Minnesota

South 1/4 Corner of Sec. 11 Township 32 Range 23

CORNER HISTORY:

February 1855 - This corner was established by Hiram Taylor, Deputy Surveyor. Taylor marked the position by "Set quarter section post" with one bearing tree marked as an accessory.

July 15, 1966 - Set cast iron monument flush using area resurvey. Established ties to monument.

June 16, 1971 - Found cast iron monument and updated ties.

June 9, 1975 - Found cast iron monument and updated ties.

June 12, 1978 - Found cast iron monument and updated ties.

November 19, 1991 - Found cast iron monument and updated ties.

August 15, 1996 - Found cast iron monument and updated ties.

September 5, 2001 - Established NAD 1983 (1996 adj.) Anoka County project coordinates by static GPS methods.

March 30, 2011 - Found cast iron monument down 0.3'± and updated ties. Set sign and post on the east side.

February 2017 - Found cast iron monument down 0.5'± and updated ties.

March 15, 2021 - Found cast iron monument down 0.5'± and updated ties.