

# CERTIFICATE OF LOCATION OF GOVERNMENT CORNER

County of Anoka

State of Minnesota

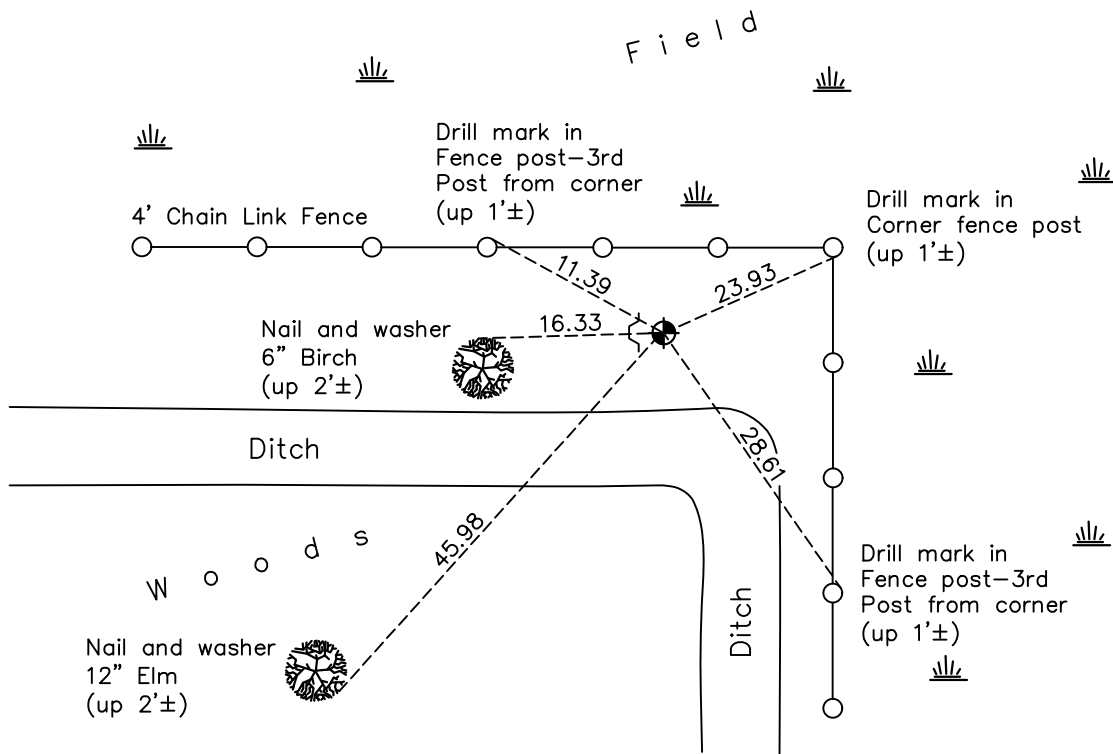
## Southeast Corner of Sec. 10 Township 32 Range 23

On the 9th day of July, 1964, the described corner was evidenced by area resurvey

and to perpetuate the location of said corner, at the exact location thereof, a permanent marker was placed consisting of a cast iron monument

AND on the 12th day of April, 2021, said permanent marker was found down 0.2'± with a sign and post on the west side and the ties were updated. Monument leaning east slightly.

Updated reference ties are as shown below.



Revision Date  
7/14/2021

N.A.D. 1983 Coordinates  
(1996 Adjustment)

| County Project Coordinates |                    |
|----------------------------|--------------------|
| Northing                   | <u>185301.1453</u> |
| Easting                    | <u>521487.6233</u> |
| Date                       | <u>7/30/02</u>     |

I hereby certify that this United States public land survey monument record is correct and complete to the best of my knowledge and belief.

*David Zieglmeier* Date 5/31/22

David Zieglmeier Anoka County Surveyor  
Minnesota License Number 46179

# HISTORY OF GOVERNMENT CORNER

Page No. 48

County of Anoka

State of Minnesota

## Southeast Corner of Sec. 10 Township 32 Range 23

### **CORNER HISTORY:**

February 1855 - This corner was established by Hiram Taylor, Deputy Surveyor. Taylor marked the position by "Set post corner to sections 10, 11, 14 & 15" with two bearing trees marked as accessories.

July 9, 1964 - Found 1-1/4" red and white iron pipe up 2'±. Updated ties.

June 16, 1971 - Found red and white iron pipe and updated ties.

June 9, 1975 - Found red and white iron pipe and updated ties.

May 6, 1977 - Found red and white iron pipe missing. Retied 2" iron pipe as southeast corner.

June 12, 1978 - Found 2" iron pipe and updated ties.

July 16, 1984 - Found 2" iron pipe and updated ties.

July 6, 1987 - Found 2" iron pipe and updated ties.

August 28, 1996 - Found 2" iron pipe and updated ties.

October 9, 2001 - Found cast iron monument (unknown set date) and updated ties.

March 24, 2011 - Found cast iron monument and updated ties.

February 16, 2017 - Found cast iron monument down 0.2'± and slightly leaning easterly. Updated ties.

April 12, 2021 - Found cast iron monument down 0.2'± and slightly leaning easterly. Updated ties. Verified position of corner by VRS GPS method.