

# CERTIFICATE OF LOCATION OF GOVERNMENT CORNER

County of Anoka

State of Minnesota

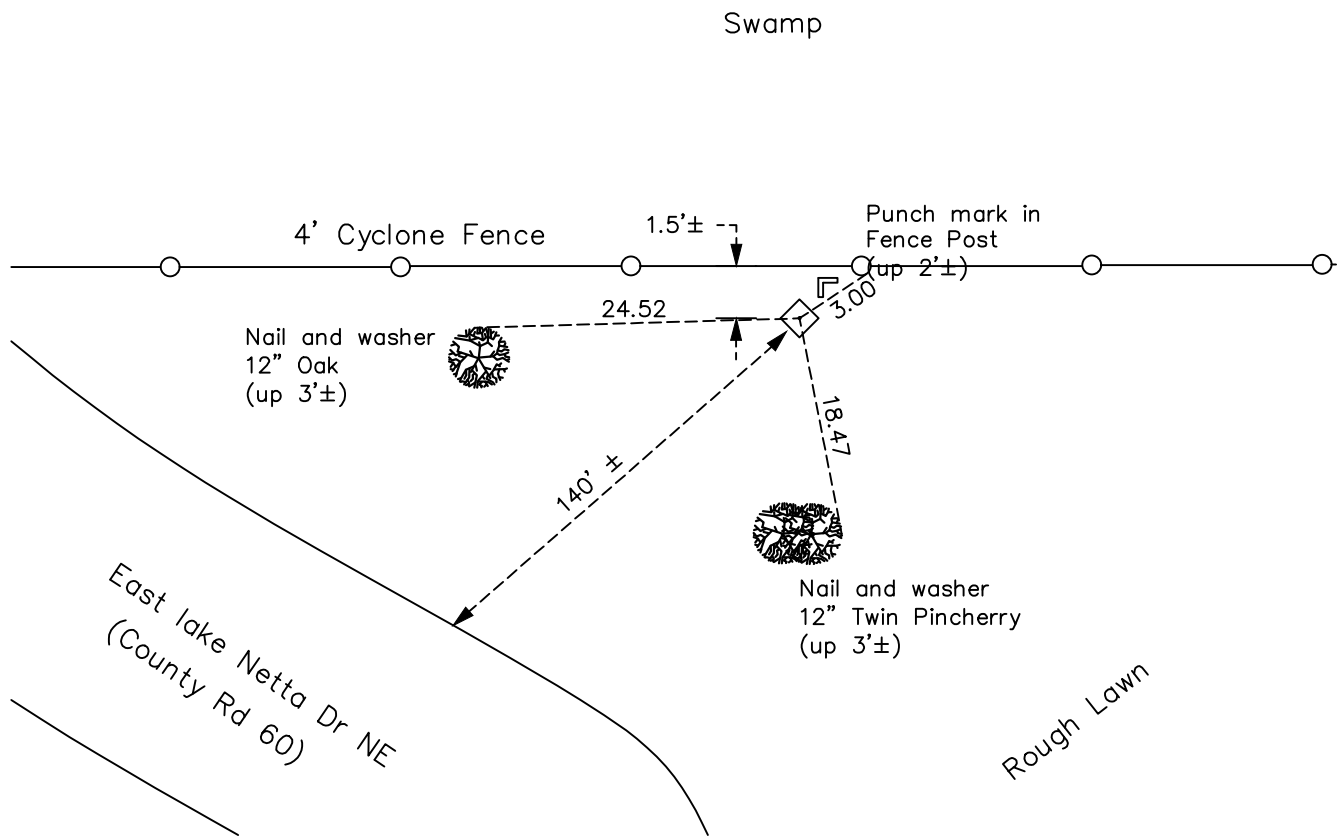
on Sixteenth Corner of Sec. 10 Township 32 Range 23  
on South line of SE 1/4

On the 13th day of February, 1961, the described corner was evidenced by a 6" X 6"  
Granite Monument

and to perpetuate the location of said corner, at the exact location thereof, a permanent marker was placed consisting of same granite monument

AND on the 14th day of July, 2023, said permanent marker was found up 0.10'±, position verified with ACS RTK GPS method and established ties as all historical ties were missing

Updated reference ties are as shown below.



Revision Date  
10/04/2023

N.A.D. ~~1983~~ Coordinates  
(2011 Adjustment)

County Project Coordinates	
Northing	<u>185327.7554</u>
Easting	<u>520147.4813</u>
Date	<u>9/04/2001</u>

I hereby certify that this United States public land survey monument record is correct and complete to the best of my knowledge and belief.

*David Zieglmeier* Date 12/11/23

David M. Zieglmeier, Anoka County Surveyor  
 Minnesota License Number 46179

# HISTORY OF GOVERNMENT CORNER

County of Anoka

State of Minnesota

Sixteenth Corner of Sec. 10 Township 32 Range 23  
on South line of SE 1/4

## **CORNER HISTORY:**

February 13, 1961 - Found Granite monument up 0.5'± and updated ties

July 11, 1974; June 9 1975; June 12, 1978; July 16, 1984; November 19, 1991 - Found Granite monument and updated ties

July 14, 2023 - Found Granite monument up 0.10'±, verified position with ACS RTK GPS method and established ties as all historical ties were missing.