

CERTIFICATE OF LOCATION OF GOVERNMENT CORNER

County of Anoka

State of Minnesota

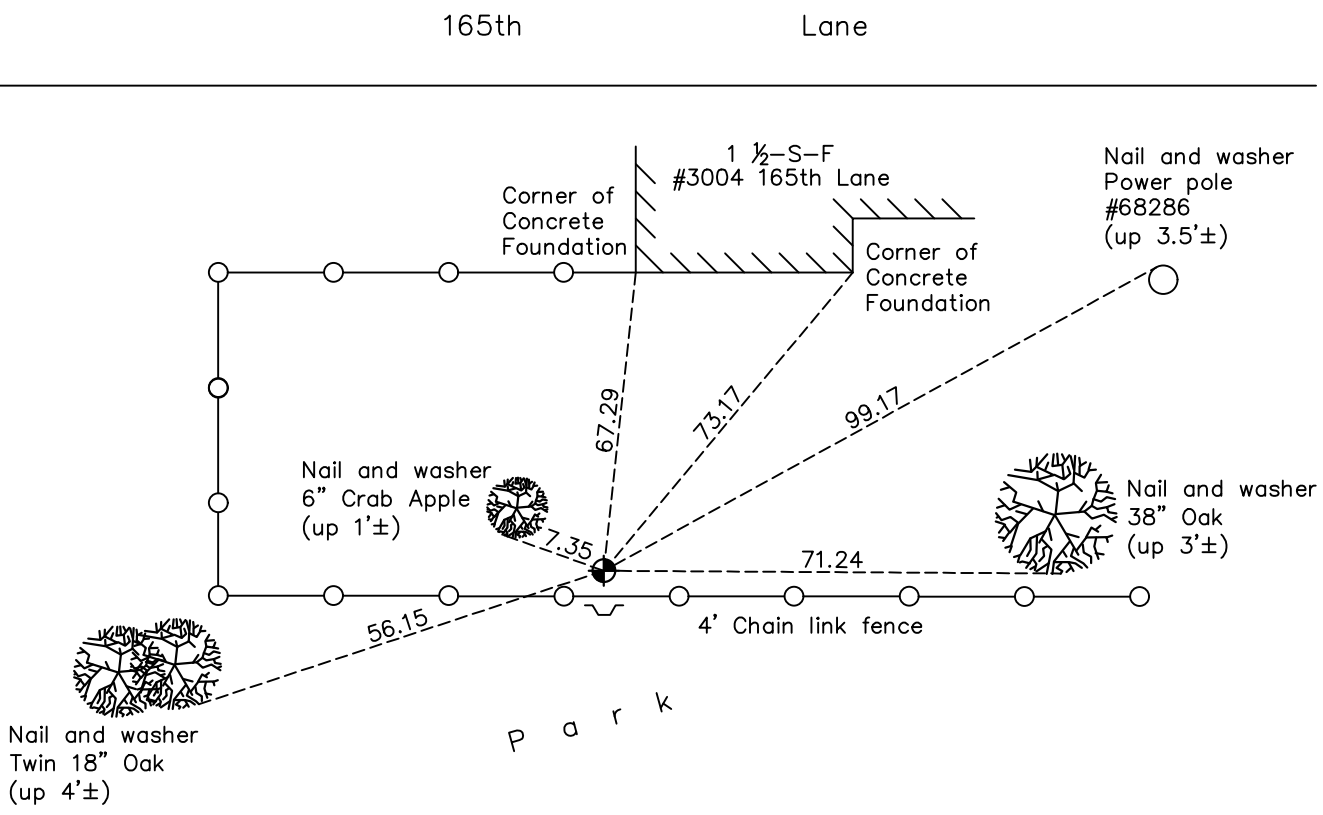
South 1/4 Corner of Sec. 10 Township 32 Range 23

On the 22nd day of March, 1961, the described corner was evidenced by area resurvey

and to perpetuate the location of said corner, at the exact location thereof, a permanent marker was placed consisting of a cast iron monument with a sign and post on the south side

AND on the 12th day of April, 2021, said permanent marker was found down 0.5'± and the ties were updated. Sign and post leaning on the south side

Updated reference ties are as shown below.



N
W ANOKA COUNTY SURVEYOR E
S

Revision Date
7/19/2021

N.A.D. 1983 Coordinates
(1996 Adjustment)

County Project Coordinates	
Northing	<u>185354.0417</u>
Easting	<u>518805.7494</u>
Date	<u>9/04/01</u>

I hereby certify that this United States public land survey monument record is correct and complete to the best of my knowledge and belief.

David Zieglmeier Date 5/31/22

David Zieglmeier Anoka County Surveyor
Minnesota License Number 46179

HISTORY OF GOVERNMENT CORNER

Page No. 50

County of Anoka

State of Minnesota

South 1/4 Corner of Sec. 10 Township 32 Range 23

CORNER HISTORY:

February 1855 - This corner was established by Hiram Taylor, Deputy Surveyor. Taylor marked the position by "Set quarter section post" with two bearing trees marked as accessories.

March 22, 1961 - Found no evidence of original corner. Set cast iron monument down 0.6'± using area resurvey. Established ties to monument.

July 9, 1964 - Found cast iron monument and updated ties.

June 9, 1975 - Found cast iron monument and updated ties.

June 12, 1978 - Found cast iron monument and updated ties.

May 22, 1981 - Found cast iron monument and updated ties. Set sign and post on south side.

July 10, 1984 - Found cast iron monument and updated ties.

July 6, 1987 - Found cast iron monument and updated ties.

November 19, 1991 - Found cast iron monument and updated ties.

August 21, 1996 - Found cast iron monument and updated ties.

September 4, 2001 - Established NAD 1983 (1996 adj.) Anoka County project coordinates by static GPS methods.

March 25, 2011 - Found cast iron monument down 0.5'± and updated ties.

March 21, 2017 - Found cast iron monument down 0.5'± and updated ties.

April 12, 2021 - Found cast iron monument down 0.5'± and updated ties. Verified position of corner by VRS GPS method.