

CERTIFICATE OF LOCATION OF GOVERNMENT CORNER

County of Anoka

State of Minnesota

Witness Corner of Sec. 16 Township 32 Range 23

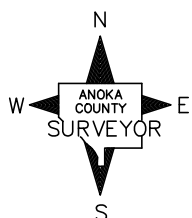
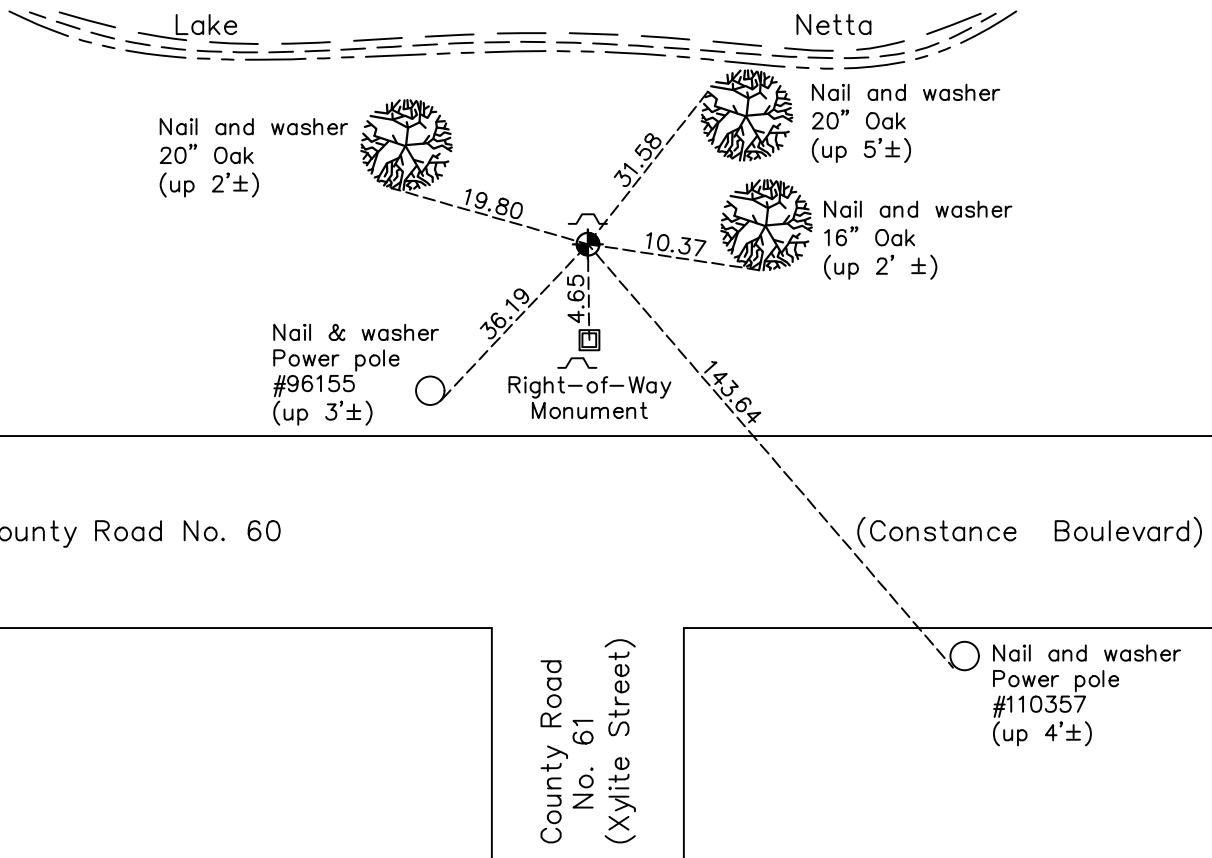
(on east line of NE1/4)

On the 4th day of March, 1998, the described corner was evidenced by area resurvey

and to perpetuate the location of said corner, at the exact location thereof, a permanent marker was placed consisting of a cast iron monument with a sign and post on the north side

AND on the 23rd day of February, 2021, said permanent marker was found flush and the ties were updated

Updated reference ties are as shown below.



Revision Date
7/19/2021

N.A.D. 1983 Coordinates
(1996 Adjustment)

County Project Coordinates	
Northing	<u>184178.2378</u>
Easting	<u>516109.3396</u>
Date	<u>11/28/01</u>

I hereby certify that this United States public land survey monument record is correct and complete to the best of my knowledge and belief.

David Zieglmeier Date 5/31/22

David Zieglmeier Anoka County Surveyor
 Minnesota License Number 46179

HISTORY OF GOVERNMENT CORNER

County of Anoka

State of Minnesota

Witness Corner of Sec. 16 Township 32 Range 23
(on east line of NE1/4)

CORNER HISTORY:

April 20, 1990 - Found broken concrete monument and replaced with a red and white iron pipe using area resurvey. No corner ties available.

March 4, 1998 - Set cast iron monument using area resurvey. Updated ties.

November 28, 2001 - Established NAD 1983 (1996 adj.) Anoka County project coordinates by static GPS methods.

July 3, 2002 - Found cast iron monument and updated ties.

March 1, 2011 - Found cast iron monument and updated ties.

March 10, 2017 - Found cast iron monument and updated ties.

February 23, 2021 - Found cast iron monument and updated ties.