

CERTIFICATE OF LOCATION OF GOVERNMENT CORNER

County of Anoka

State of Minnesota

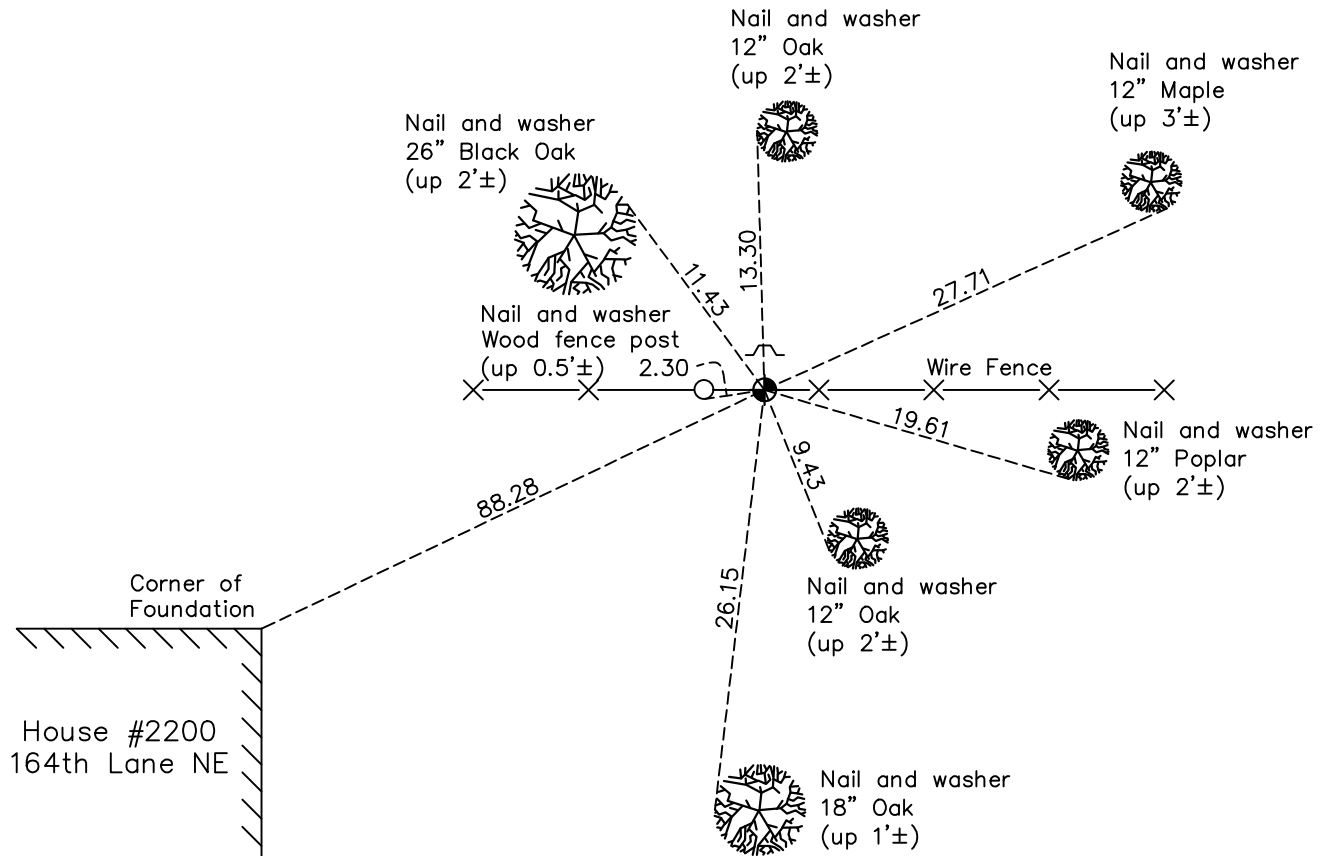
North $\frac{1}{4}$ Corner of Sec. 16 Township 32 Range 23

On the 10th day of June, 1960, the described corner was evidenced by a concrete monument

and to perpetuate the location of said corner, at the exact location thereof, a permanent marker was placed consisting of a cast iron monument with a sign and post on the north side

AND on the 15th day of January, 2021, said permanent marker was found down 0.2'± and the ties were updated

Updated reference ties are as shown below.



Revision Date
7/19/2021

N.A.D. 1983 Coordinates
(1996 Adjustment)

County Project Coordinates	
Northing	<u>185507.4960</u>
Easting	<u>513459.4919</u>
Date	<u>1/31/02</u>

I hereby certify that this United States public land survey monument record is correct and complete to the best of my knowledge and belief.

David Zieglmeier Date 5/31/22

David Zieglmeier Anoka County Surveyor
Minnesota License Number 46179

HISTORY OF GOVERNMENT CORNER

Page No. 54

County of Anoka

State of Minnesota

North 1/4 Corner of Sec. 16 Township 32 Range 23

CORNER HISTORY:

February 1855 - This corner was established by Hiram Taylor, Deputy Surveyor. Taylor marked the position by "Set quarter section post" with one bearing tree marked as an accessory.

Unknown date - Found concrete monument up 0.3'± with an iron pipe on the north side. Updated ties.

June 10, 1960 - Found concrete monument up 0.5'± and updated ties.

July 21, 1964 - Found concrete monument and updated ties.

July 21, 1966 - Found concrete monument and updated ties.

June 14, 1971 - Found concrete monument and updated ties.

June 10, 1975 - Found concrete monument and replaced with a cast iron monument flush. Updated ties. Set sign and post 1'± north of monument.

June 12, 1978 - Found cast iron monument and updated ties.

July 11, 1984 - Found cast iron monument and updated ties.

January 2, 1991 - Found cast iron monument and updated ties.

October 19, 1991 - Found cast iron monument and updated ties.

August 20, 1996 - Found cast iron monument and updated ties.

January 31, 2002 - Established NAD 1983 (1996 adj.) Anoka County project coordinates by static GPS methods.

March 14, 2011 - Found cast iron monument and updated ties.

March 10, 2017 - Found cast iron monument down 0.2'± and updated ties.

January 15, 2021 - Found cast iron monument down 0.2'± and updated ties.