

# CERTIFICATE OF LOCATION OF GOVERNMENT CORNER

County of Anoka

State of Minnesota

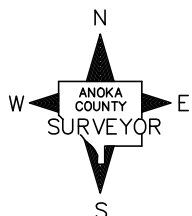
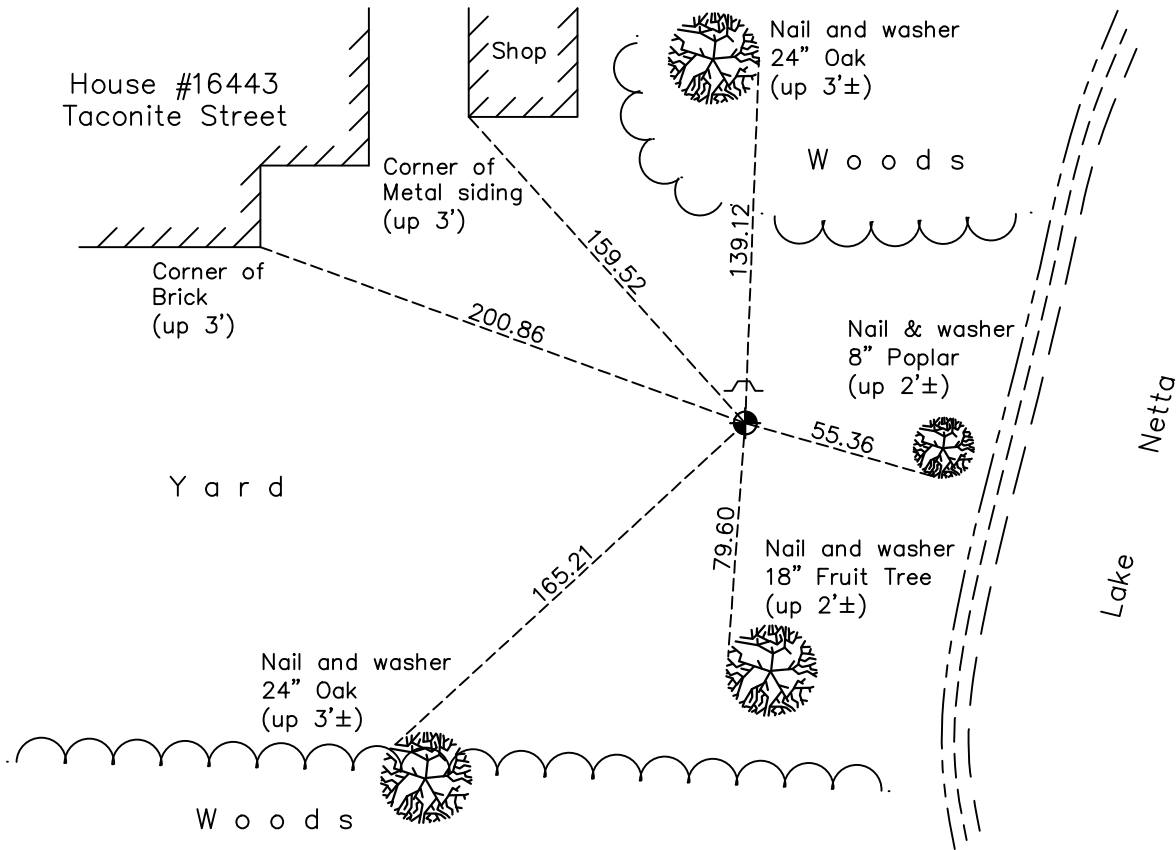
Witness Corner of Sec. 16 Township 32 Range 23  
(on north line of NE1/4)

On the 12th day of May, 1977, the described corner was evidenced by area resurvey

and to perpetuate the location of said corner, at the exact location thereof, a permanent marker was placed consisting of a cast iron monument with a sign and post on the north side

AND on the 12th day of April, 2021, said permanent marker was found down 0.2'± and the ties were updated

Updated reference ties are as shown below.



Revision Date  
7/19/2021

N.A.D. 1983 Coordinates  
(1996 Adjustment)

County Project Coordinates	
Northing	<u>185461.4881</u>
Easting	<u>515095.7535</u>
Date	<u>1/31/02</u>

I hereby certify that this United States public land survey monument record is correct and complete to the best of my knowledge and belief.

*David Zieglmeier* Date 5/31/22

David Zieglmeier Anoka County Surveyor  
Minnesota License Number 46179

# HISTORY OF GOVERNMENT CORNER

Page No. 54A

County of Anoka

State of Minnesota

Witness Corner of Sec. 16 Township 32 Range 23  
(on north line of NE1/4)

## **CORNER HISTORY:**

May 12, 1977 - Set cast iron monument flush using area resurvey. Established ties to monument. Set sign and post on the north side.

June 12, 1978 - Found cast iron monument and updated ties.

December 31, 1990 - Found cast iron monument and updated ties.

August 23, 1996 - Found cast iron monument and updated ties.

January 31, 2002 - Established NAD 1983 (1996 adj.) Anoka County project coordinates by static GPS methods.

April 5, 2011 - Found cast iron monument down 0.2'± and updated ties.

March 10, 2017 - Found cast iron monument down 0.2'± and updated ties.

April 12, 2021 - Found cast iron monument down 0.2'± and updated ties. Position verified by VRS GPS method.