

# CERTIFICATE OF LOCATION OF GOVERNMENT CORNER

County of Anoka

State of Minnesota

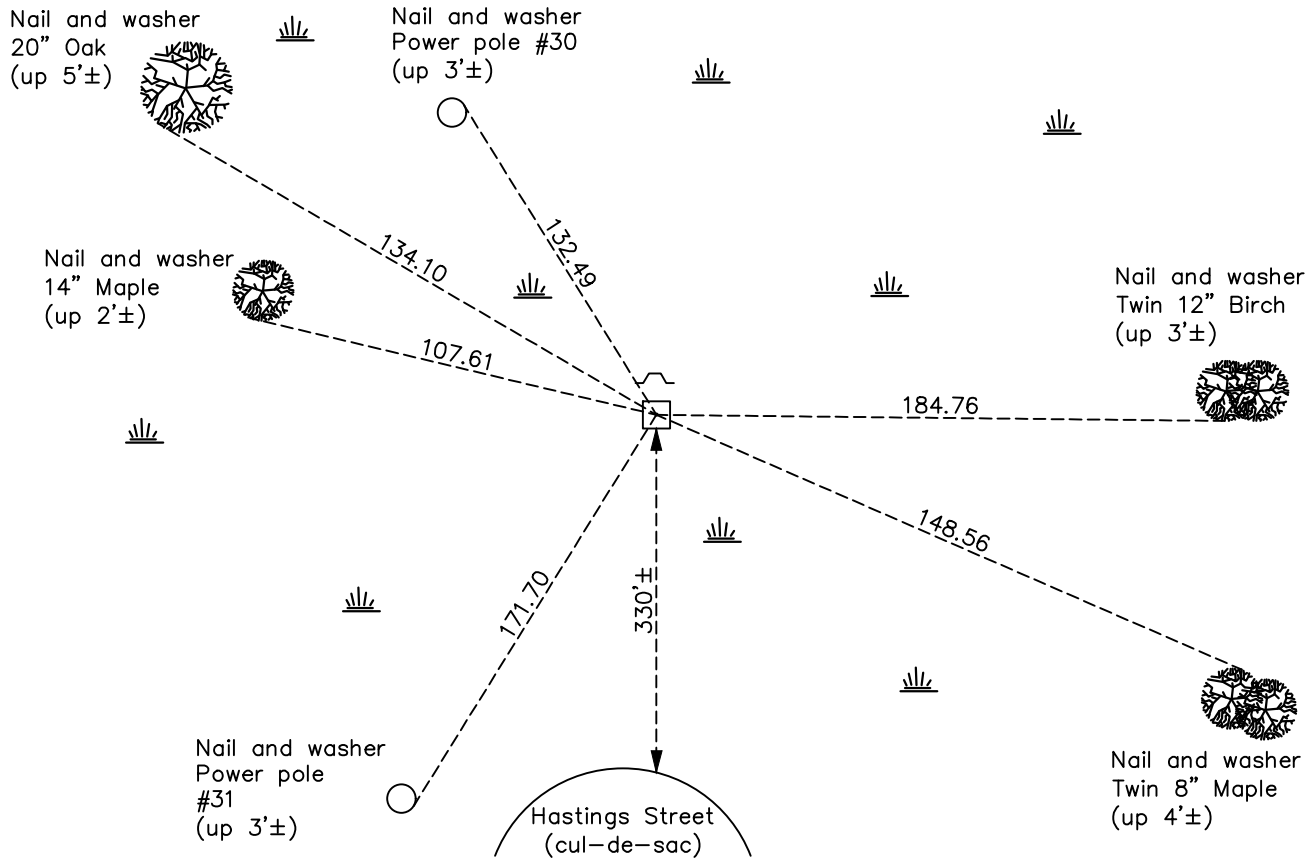
## Southeast Corner of Sec. 8 Township 32 Range 23

On the 28th day of December, 1962, the described corner was evidenced by a concrete monument

and to perpetuate the location of said corner, at the exact location thereof, a permanent marker was placed consisting of the same concrete monument (4" square) with a sign and post on the north side

AND on the 15th day of April, 2021, said permanent marker was found up 0.2'± and the ties were updated

Updated reference ties are as shown below.



Revision Date  
7/19/2021

N.A.D. 1983 Coordinates  
 (1996 Adjustment)

County Project Coordinates	
Northing	<u>185581.6487</u>
Easting	<u>510840.8293</u>
Date	<u>1/30/02</u>

I hereby certify that this United States public land survey monument record is correct and complete to the best of my knowledge and belief.  
*David Zieglmeier* Date 5/31/22  
 David Zieglmeier Anoka County Surveyor  
 Minnesota License Number 46179

# HISTORY OF GOVERNMENT CORNER

Page No. 55

County of Anoka

State of Minnesota

## Southeast Corner of Sec. 8 Township 32 Range 23

### **CORNER HISTORY:**

February 1855 - This corner was established by Hiram Taylor, Deputy Surveyor. Taylor marked the position by "Set post corner to sections 8, 9, 16 & 17" with two bearing trees marked as accessories.

November 29, 1948 - Found concrete monument up 0.3'± and updated ties.

December 28, 1962 - Found 4" square concrete monument and updated ties.

July 21, 1964 - Found concrete monument and updated ties.

July 21, 1966 - Found concrete monument and updated ties.

June 24, 1971 - Found concrete monument and updated ties.

January 2, 1991 - Found concrete monument and updated ties.

January 6, 1993 - Found concrete monument and updated ties.

January 30, 2002 - Found concrete monument and updated ties. Established NAD 1983 (1996 adj.) Anoka County project coordinates by static GPS methods.

March 14, 2011 - Found concrete monument and updated ties.

March 16, 2017 - Found concrete monument up 0.2'± and updated ties.

April 15, 2021 - Found concrete monument up 0.2'± and updated ties.