

CERTIFICATE OF LOCATION OF GOVERNMENT CORNER

County of Anoka

State of Minnesota

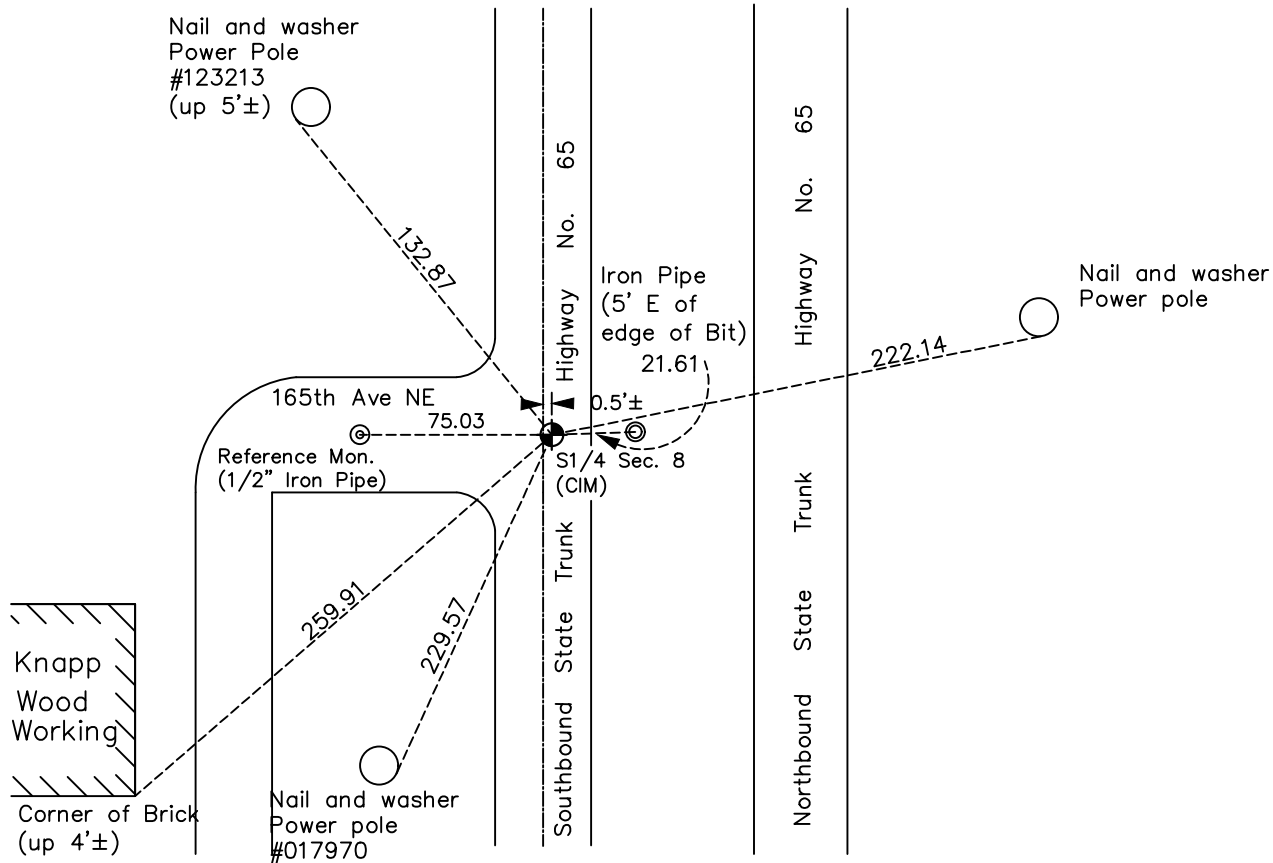
South 1/4 Corner of Sec. 8 Township 32 Range 23

On the 9th day of September, 1969, the described corner was evidenced by a P.K. nail

and to perpetuate the location of said corner, at the exact location thereof, a permanent marker was placed consisting of a cast iron monument

AND on the 9th day of June, 2023, said permanent marker was found cast iron monument flush with road surface. Reference monument (index #1625) set 75' westerly and established ties.

Updated reference ties are as shown below.



N.A.D. 1983 Coordinates
(1996 Adjustment)

County Project Coordinates	
Northing	<u>185531.8004</u>
Easting	<u>508142.8432</u>
Date	<u>9/18/06</u>

I hereby certify that this United States public land survey monument record is correct and complete to the best of my knowledge and belief.

David Zieglmeier Date 12/11/23

David Zieglmeier Anoka County Surveyor
Minnesota License Number 46179

Revision Date
7/31/2023

REFERENCE MONUMENT FOR GOVERNMENT CORNER

Reference to County of Anoka State of Minnesota

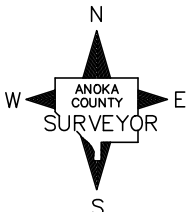
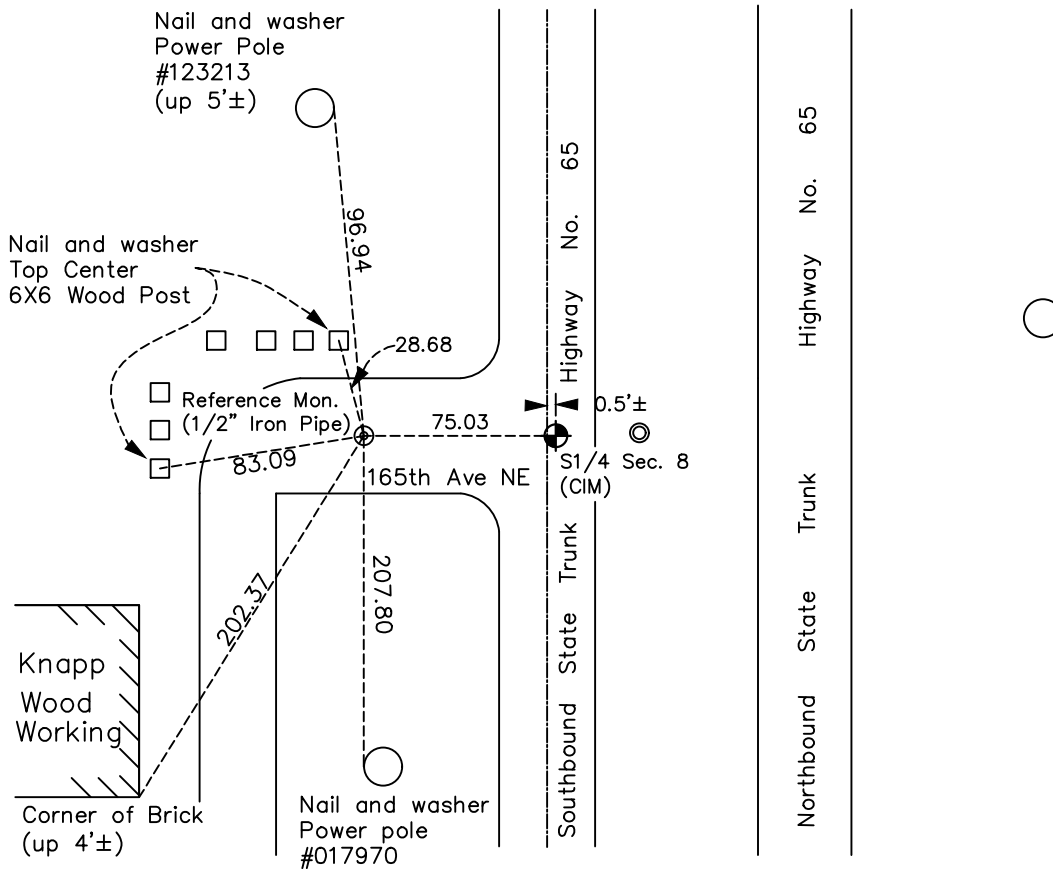
South 1/4 Corner of Sec. **8** Township **32** Range **23**

On the 9th day of June, 2023, the described reference monument was evidenced by a computed position 75' westerly along the section line

and to reference the location of said corner, at the exact location thereof, a permanent marker was placed consisting of a 1/2" X 2' rebar with Anoka County aluminum cap and punch mark

AND on the 9th day of June, 2023, said permanent marker was set flush using RTK GPS method and ties were established to the reference monument

Updated reference ties are as shown below.



Revision Date
7/31/2023

REFERENCE MONUMENT
 N.A.D. 1983 (2011 Adj.)

County Project Coordinates	
Northing	<u>185530.1228</u>
Easting	<u>508067.8620</u>
Date	<u>6/9/2023</u>

HISTORY OF GOVERNMENT CORNER

Page No. 56

County of Anoka

State of Minnesota

South 1/4 Corner of Sec. 8 Township 32 Range 23

CORNER HISTORY:

February 1855 - This corner was established by Hiram Taylor, Deputy Surveyor. Taylor marked the position by "Set quarter section post" with one bearing tree marked as an accessory.

January 10, 1961 - Found cast iron monument in centerline of highway 65 (Corner location subject to change). Updated ties.

April 3, 1961 - Set P.K. spike using Gillis' old distance South from North 1/4 corner (41.25' Northerly of cast iron monument found 1/10/61). Updated ties to P.K. spike.

April 16, 1963 - Found P.K. spike and set construction ties prior to road construction.

July 20, 1966 - Found P.K. spike and updated ties.

September 9, 1969 - Found P.K. spike and replaced with a cast iron monument flush according to the ties. Updated ties.

June 28, 1978 - Found cast iron monument.

July 20, 1981 - Found cast iron monument and updated ties.

July 13, 1984 - Found cast iron monument and updated ties.

July 10, 1987 - Found cast iron monument and updated ties.

August 18, 1998 - Found cast iron monument and updated ties.

September 18, 2006 - Found cast iron monument and updated ties. Established NAD 1983 (1996 adj.) Anoka County project coordinates by static GPS methods.

June 9, 2023 - Found cast iron monument flush. Set **reference monument** to a computed position 75' westerly along the section line using RTK GPS method consisting of a 1/2" x 2' long rebar with Anoka County aluminum cap and punch mark, set flush with surface. Established ties to **reference monument**.