

# CERTIFICATE OF LOCATION OF GOVERNMENT CORNER

County of Anoka

State of Minnesota

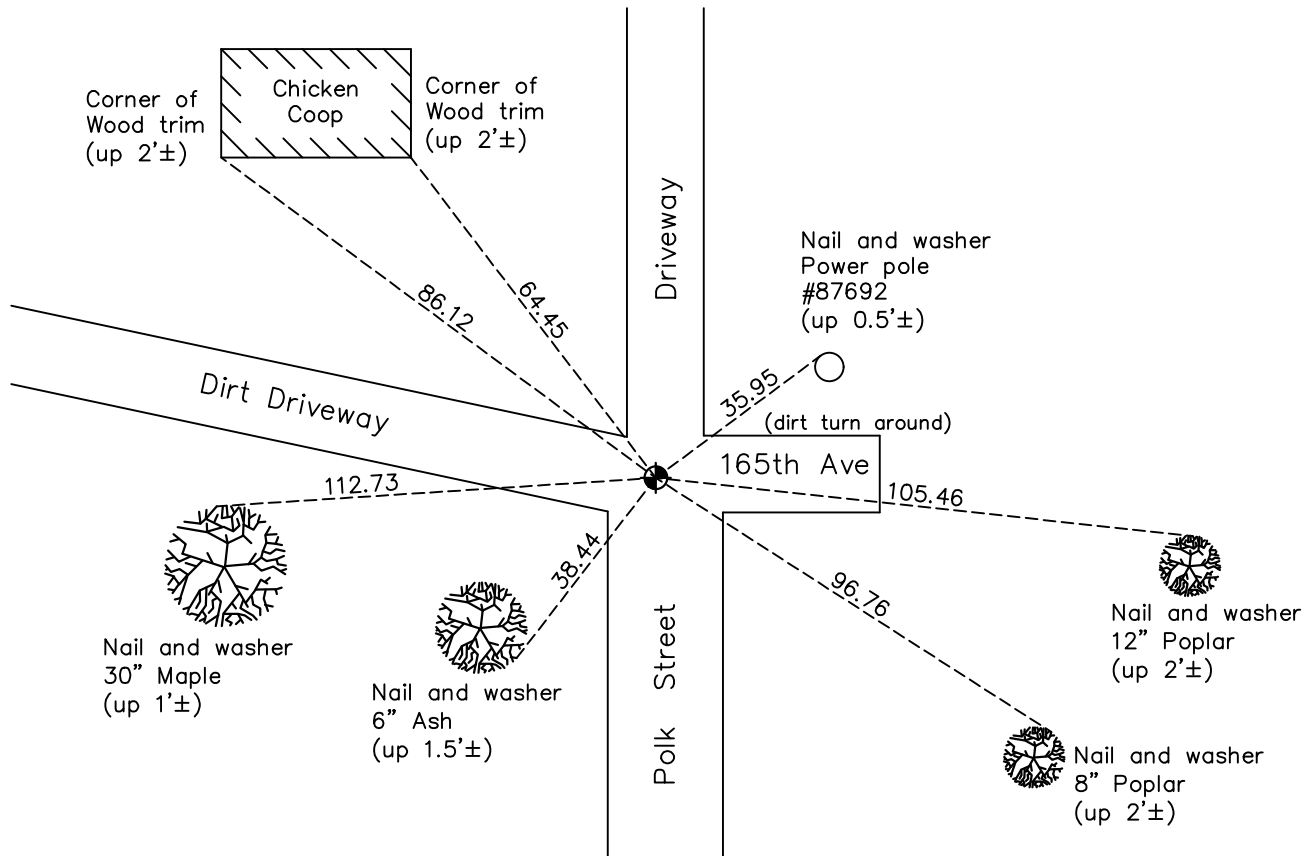
## Southwest Corner of Sec. 8 Township 32 Range 23

On the 22nd day of June, 1961, the described corner was evidenced by a 3/4" iron pipe

and to perpetuate the location of said corner, at the exact location thereof, a permanent marker was placed consisting of a cast iron monument down 0.5'±

AND on the 2nd day of April, 2021, said permanent marker was found down 0.5'± and the ties were updated

Updated reference ties are as shown below.



Revision Date  
7/20/2021

N.A.D. 1983 Coordinates  
(1996 Adjustment)

County Project Coordinates	
Northing	<u>185471.9983</u>
Easting	<u>505469.9668</u>
Date	<u>12/13/01</u>

I hereby certify that this United States public land survey monument record is correct and complete to the best of my knowledge and belief.

*David Zieglmeier* Date 5/31/22

David Zieglmeier Anoka County Surveyor  
Minnesota License Number 46179

# HISTORY OF GOVERNMENT CORNER

Page No. 57

County of Anoka

State of Minnesota

## Southwest Corner of Sec. 8 Township 32 Range 23

### **CORNER HISTORY:**

February 1855 - This corner was established by Hiram Taylor, Deputy Surveyor. Taylor marked the position by "Set post corner to sections 7, 8, 17 & 18" with two bearing trees marked as accessories.

June 22, 1961 - Found 3/4" iron set by N.C. Hoiium. Updated ties.

July 20, 1964 - Found 3/4" iron and replaced with a cast iron monument down 0.3'±. Updated ties.

July 20, 1966 - Found cast iron monument and updated ties.

May 21, 1971 - Found cast iron monument and updated ties.

June 10, 1975 - Found cast iron monument and updated ties.

June 13, 1978 - Found cast iron monument and updated ties.

June 26, 1984 - Found cast iron monument and updated ties.

October 19, 1991 - Found cast iron monument and updated ties.

December 22, 1993 - Found cast iron monument and updated ties.

August 8, 1996 - Found cast iron monument and updated ties.

December 13, 2001 - Found cast iron monument down 0.5'±. Established NAD 1983 (1996 adj.) Anoka County project coordinates by static GPS methods. Updated ties.

February 24, 2011 - Found cast iron monument down 0.5'± and updated ties.

February 15, 2017 - Found cast iron monument down 0.5'± and updated ties.

April 2, 2021 - Found cast iron monument down 0.5'± and updated ties. Verified position by GPS VRS methods.