

CERTIFICATE OF LOCATION OF GOVERNMENT CORNER

County of Anoka

State of Minnesota

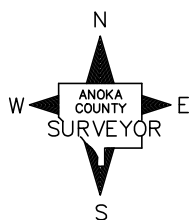
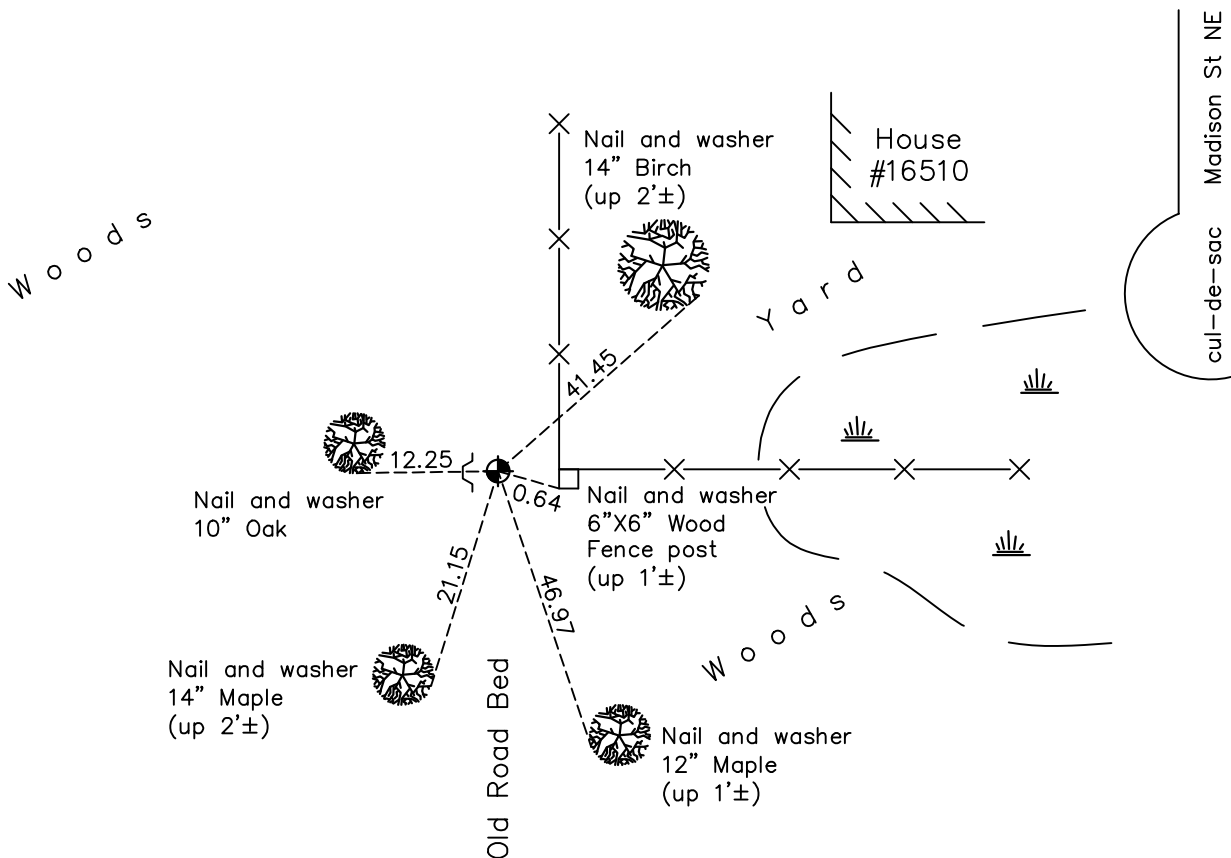
North 1/4 Corner of Sec. 18 Township 32 Range 23

On the 11th day of September, 1964, the described corner was evidenced by area resurvey

and to perpetuate the location of said corner, at the exact location thereof, a permanent marker was placed consisting of a cast iron monument down 1.5'± with a sign and post on the west side.

AND on the 2nd day of April, 2021, said permanent marker was found down 1.5'± and the ties were updated

Updated reference ties are as shown below.



Revision Date
7/20/2021

N.A.D. 1983 Coordinates
 (1996 Adjustment)

County Project Coordinates	
Northing	<u>185382.6140</u>
Easting	<u>502825.2718</u>
Date	<u>1/02/02</u>

I hereby certify that this United States public land survey monument record is correct and complete to the best of my knowledge and belief.

David Zieglmeier Date 5/31/22

David Zieglmeier Anoka County Surveyor
 Minnesota License Number 46179

HISTORY OF GOVERNMENT CORNER

Page No. 58

County of Anoka

State of Minnesota

North 1/4 Corner of Sec. 18 Township 32 Range 23

CORNER HISTORY:

February 1855 - This corner was established by Hiram Taylor, Deputy Surveyor. Taylor marked the position by "Set quarter section post" with one bearing tree marked as an accessory.

September 11, 1964 - Set cast iron monument flush using area resurvey. Established ties to monument.

July 20, 1966 - Found cast iron monument flush and updated ties.

May 21, 1971 - Found cast iron monument up 0.1'± and updated ties.

June 23, 1975 - Found cast iron monument broken and replaced with a new cast iron monument using corner ties. Updated ties.

May 24, 1978 - Found cast iron monument broken and replaced with a new cast iron monument down 1'±. Updated ties.

June 13, 1978 - Found cast iron monument and updated ties.

July 12, 1984 - Found cast iron monument and updated ties.

October 18, 1991 - Found cast iron monument and updated ties.

August 20, 1996 - Found cast iron monument and updated ties.

January 2, 2002 - Found cast iron monument down 1.5'± and updated ties. Established NAD 1983 (1996 adj.) Anoka County project coordinates by static GPS methods.

March 10, 2011 - Found cast iron monument down 1.5'± and updated ties. Set sign and post on west side.

February 13, 2017 - Found cast iron monument down 1.5'± and updated ties.

April 2, 2021 - Found cast iron monument down 1.5'± and updated ties.