

CERTIFICATE OF LOCATION OF GOVERNMENT CORNER

County of Anoka

State of Minnesota

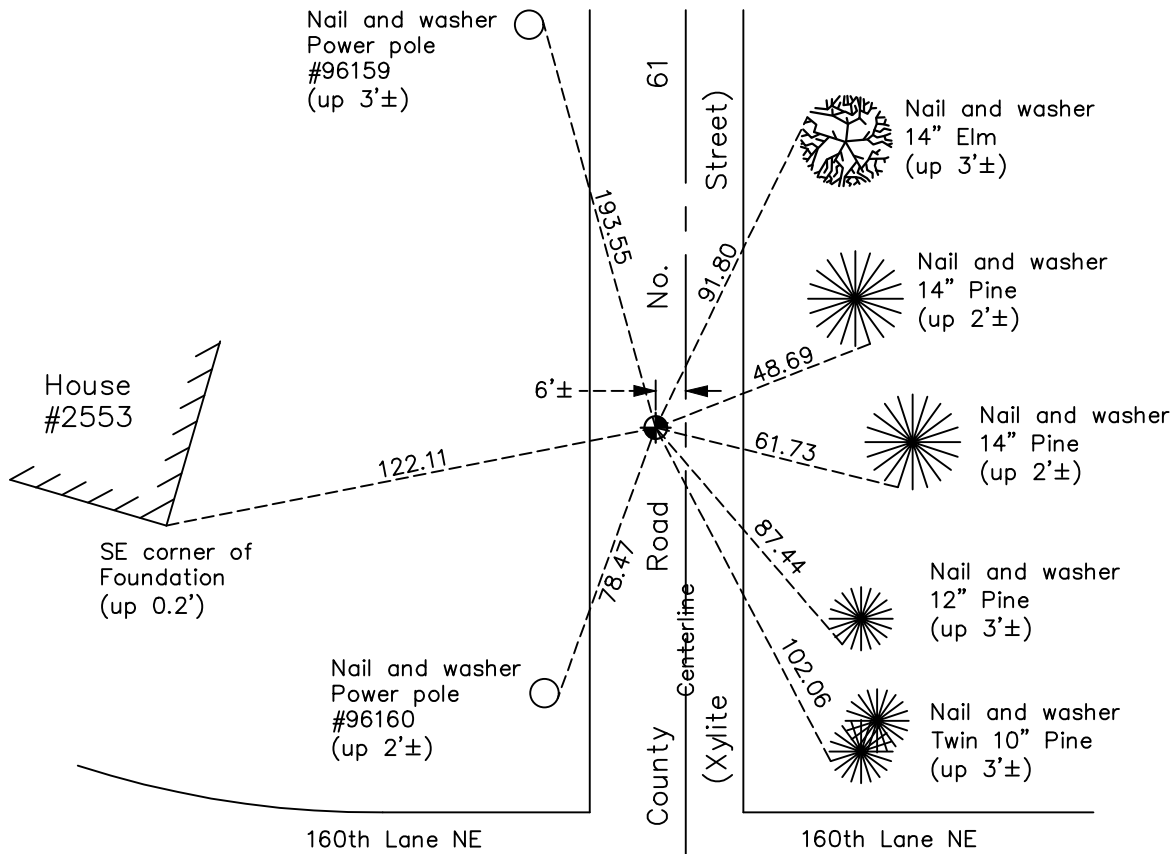
East 1/4 Corner of Sec. 16 Township 32 Range 23

On the 30th day of August, 1967, the described corner was evidenced by a concrete monument

and to perpetuate the location of said corner, at the exact location thereof, a permanent marker was placed consisting of a cast iron monument

AND on the 5th day of February, 2021, said permanent marker was found flush and the ties were updated.

Updated reference ties are as shown below.



Revision Date
7/20/2021

N.A.D. 1983 Coordinates
(1996 Adjustment)

County Project Coordinates	
Northing	<u>182794.0506</u>
Easting	<u>516109.8902</u>
Date	<u>9/18/01</u>

I hereby certify that this United States public land survey monument record is correct and complete to the best of my knowledge and belief.

David Zieglmeier Date 7/14/22

David Zieglmeier Anoka County Surveyor
Minnesota License Number 46179

HISTORY OF GOVERNMENT CORNER

Page No. 61

County of Anoka

State of Minnesota

East 1/4 Corner of Sec. 16 Township 32 Range 23

CORNER HISTORY:

February 1855 - This corner was established by Hiram Taylor, Deputy Surveyor. Taylor marked the position by "Set quarter section post" with one bearing tree marked as an accessory.

Unknown date - Found concrete monument and updated ties.

February 13, 1961 - Set temporary P.K. spike according to Cartwright's survey dimensions. Established ties to spike.

July 15, 1964 - Found temporary P.K. spike and updated ties.

August 2, 1966 - Found temporary P.K. spike and updated ties.

August 30, 1967 - Found cast iron monument flush with road and on top concrete monument down 0.9'±. Updated ties.

May 17, 1971 - Found cast iron monument and updated ties.

June 12, 1975 - Found cast iron monument and updated ties.

June 12, 1978 - Found cast iron monument and updated ties.

June 27, 1984 - Found cast iron monument and updated ties.

November 25, 1991 - Found cast iron monument and updated ties.

July 31, 1996 - Found cast iron monument and updated ties.

September 30, 1997 - Found cast iron monument and updated ties prior to road construction.

September 18, 2001 - Established NAD 1983 (1996 adj.) Anoka County project coordinates by static GPS methods.

February 28, 2011 - Found cast iron monument and updated ties.

March 13, 2017 - Found cast iron monument. Verified position by VRS GPS methods. Updated ties.

June 13, 2018 - Found partial cast iron monument on top of concrete monument. Verified position by VRS GPS methods and updated ties prior to road construction. Removed cast iron monument.

September 13, 2018 - Set cast iron monument flush after construction using static GPS methods. Updated ties.

February 5, 2021 - Found cast iron monument flush. Verified position by VRS GPS methods. Updated ties.