

CERTIFICATE OF LOCATION OF GOVERNMENT CORNER

County of Anoka

State of Minnesota

Witness Corner of Sec. 13 Township 32 Range 23

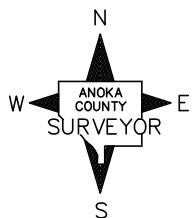
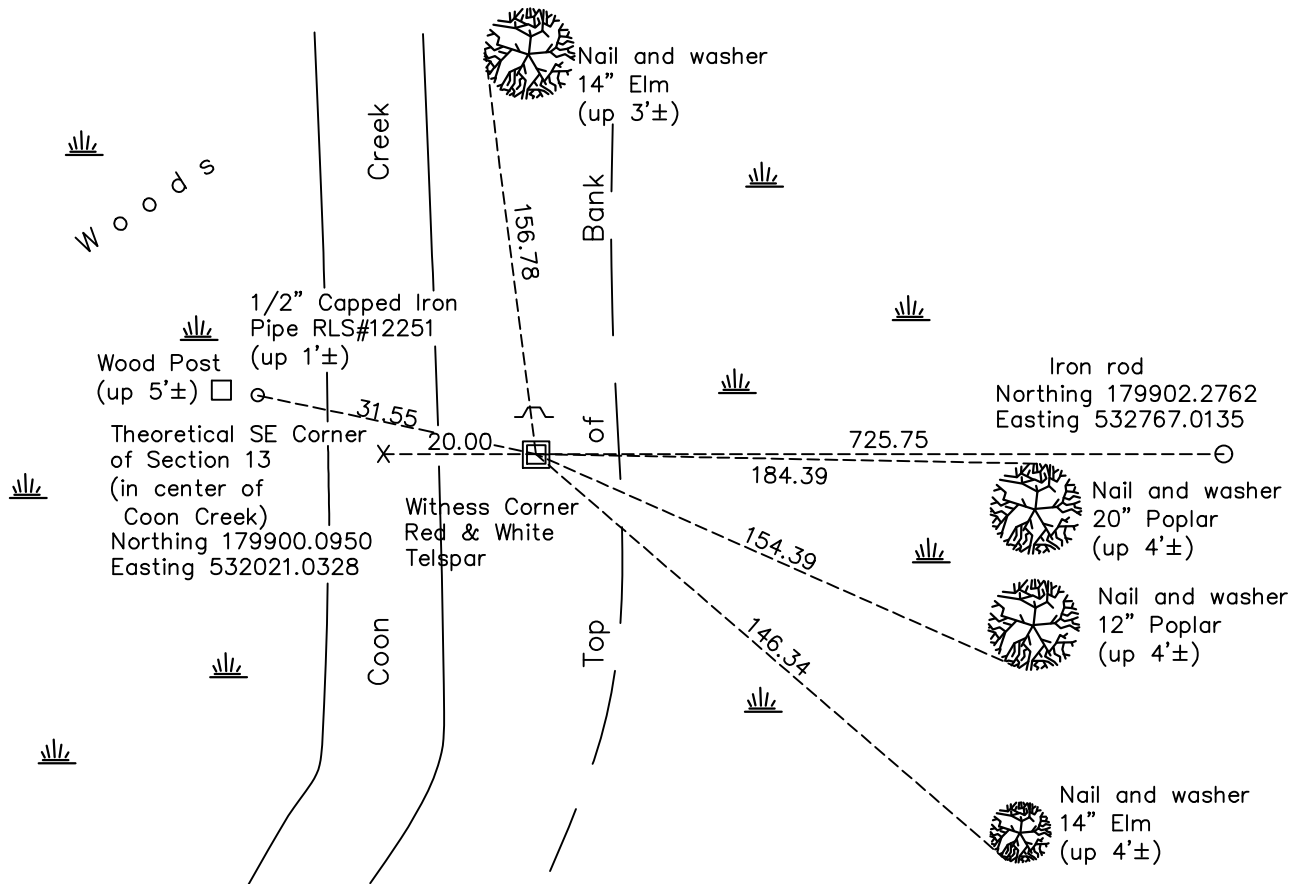
(20.00' east of SE corner of section)

On the 3rd day of March, 1976, the described corner was evidenced by a concrete monument

and to perpetuate the location of said corner, at the exact location thereof, a permanent marker was placed consisting of a red & white 2" square steel Telespar monument up 1.0'± with a 'County Surveyor' cap & punchmark and with a sign and post on the north side

AND on the 28th day of December, 2022, said permanent marker was found up 1.0'± and the ties were updated

Updated reference ties are as shown below.



Revision Date
1/03/2023

N.A.D. 1983 Coordinates
(1996 Adjustment)

County Project Coordinates	
Northing	<u>179900.1535</u>
Easting	<u>532041.0327</u>
Date	<u>2/13/02</u>

I hereby certify that this United States public land survey monument record is correct and complete to the best of my knowledge and belief.

David Zieglmeier Date 6/28/23

David Zieglmeier Anoka County Surveyor
Minnesota License Number 46179

HISTORY OF GOVERNMENT CORNER

Page No. 65

County of Anoka

State of Minnesota

Witness Corner of Sec. 13 Township 32 Range 23
(20.00' east of SE corner of section)

CORNER HISTORY:

Date:

March 2, 1966 - Found 4" concrete monument up 0.5'±

March 3, 1975 - Found concrete monument with sign and post on North side and updated the ties.

June 31, 1978 - Found concrete monument with sign and post on North side and updated the ties.

April 6, 1994 - Found concrete monument with sign and post on North side and updated the ties.

May 6, 2011 - Found and removed broken concrete monument and replaced with Red & White square Telspar with cap and punch mark, set up 1.0'±. The ties were updated.

February 17, 2017 - Found a red & white 2" square steel Telspar with a punched cap up 1'±, verified position by VRS GPS method and updated the ties.

December 28, 2022 - Found a red & white 2" square steel Telspar with a punched cap up 1'±, verified position by RTK GPS method and updated the ties.